

Chef Works®

# Product Catalogue

BACK OF HOUSE & FRONT OF HOUSE HOSPITALITY UNIFORMS

CHEF COATS | APRONS | SHIRTS & TOPS | SUITING | TROUSERS | HEADWEAR | FOOTWEAR



# Welcome

## TABLE OF CONTENTS

4

Sustainable Collection

12

Unisex Coat Collection

36

Women's Coat Collection

46

Trouser Collection

60

Shirt & Top Collection

101

Housekeeping & Spa Collection

106

Apron Collection

142

Suiting Collection

160

Shoe Collection

168

Headwear & Accessories Collection

174 Embroidery & Order Info  
176 Sizing Chart  
180 Global Team  
182 Quick Reference

Our Chef Works story began with a small uniform company in the late 1960s. More than five decades later, our story continues to evolve. Whilst we've grown to be the global leader in culinary and hospitality apparel, we're still rooted in the same family-owned and customer-focused principles that were established all those years ago.

With our EME headquarters and warehousing based in the UK and corporate offices around the world, Chef Works has achieved an unrivaled global reach, offering distribution in more than 90 countries. Through working with culinary giants and hospitality influencers, we've created a fit-for-purpose apparel collection that is innovative, functional and design-focused.

Chef Works are proud to dress a diverse range of customers including individual chefs, international hotel chains, award-winning restaurants, bars, culinary schools, food service companies, laundries, assisted-living facilities and upscale cinemas.

### GUIDE TO SIZING/FITS

Our new and improved sizing guide is designed to help you find your perfect fit. Throughout this catalogue you will see icons next to items that correspond to specific fits and sizing charts. Please refer to pages 180-181 to view the sizing guide.

#### EXAMPLE:

**MF 1** Modern Fit Men's Shirt

### GUIDE TO CATALOGUE ICONS



- Street-inspired culinary apparel
- Natural fabrics, dual tone denims, unique fabric finishes
- Twists on the traditional
- Cutting-edge • High-quality



- Reuse, Recycle, Renew
- Sustainable collection
- Made from recycled plastic bottles



- Recycled fabrics
- Sustainable collection
- Athleisure, flexible style
- Maximum comfort



- Skillfully created collaborative collection
- Elegant & professional
- Emphasis on performance
- Subtle colour notes
- Strong silhouettes



- Evolving the face of hospitality apparel
- Double-sided stylish face covers
- Fit snugly to face



- Special washes & treatments create unique garments
- May fade/change colour with wash and wear
- Wash separately before wearing
- Warm iron only on back of garment



- Wicks heat and moisture away from skin
- Allows cool air back through to body
- Encourages evaporation
- Cool & comfortable
- Award-winning fabric technology



- 100% cotton
- Pre-shrunk for accurate fit
- Luxurious and refined feel for extreme comfort
- Silky texture and appearance



- Stretch-to-fit
- Breathable fabric
- Comfortable and lightweight
- Available in a variety of colours



- Fine twill fabric
- Comfortable & lightweight
- Available in a variety of colours



- Made from 100% cotton
- All natural fibres
- Comfortable and breathable



- Classic and modern fits
- Strong colour options and matching
- European styling
- Quality meets value



- Made in Britain
- Non-surgical face covers
- Machine washable.



- Functionality, quality, tradition and style
- Maximum comfort
- Sustainable products



- Finest European quality
- For Spa & Housekeeping
- Style meets function
- Quality meets value



- Sign of quality
- Established in 1912
- Exquisitely tailored shirts and suiting
- A number of fabrics and shades



- Quality production
- Large colour collection
- Perfect for decoration



- 100% cotton
- High wash temperatures
- Quality meets value
- Perfect for decoration



- Dynamic outdoor clothing
- Value for money



- High quality workwear
- International standards
- Comfortable and Functional



- Modern design
- Functional and affordable staples



- Functional stylish polos
- Workwear specialists
- Enhanced durability



- Original slip resistant footwear
- Designed for safety and comfort



- Premium denim
- Versatile and timeless
- Adaptable, affordable staples



- Organic cotton
- Style meets sustainability
- Made to last
- Responsible production



- 100% comfort guaranteed footwear
- Designed to reduce pain and provide support



- Nano-protected coating
- Repels water and other liquids
- Adds to durability.



- Certified fabrics
- No harmful substances used during any process steps.



- Exceptional elasticity
- Synthetic fibre
- Abrasion resistant.





# Sustainable Collection



**FLEX**  
SERIES

RE:USE RE:CYCLE RE:NEW

Our Back-of-House eco-friendly capsule collection offers the usual style, innovation and comfort of our Chef Works designs made with sustainable materials and components. We use ethically sourced recycled plastic bottles to make our sustainable fabric



New

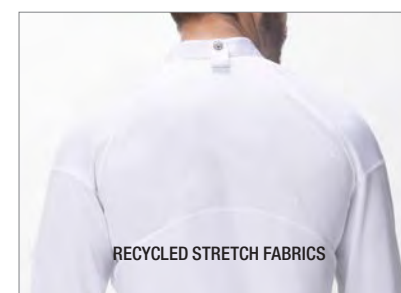
TULUM



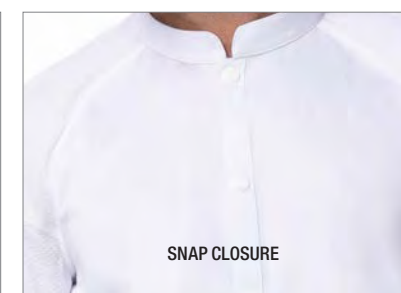
BLK  
black

GRY  
grey

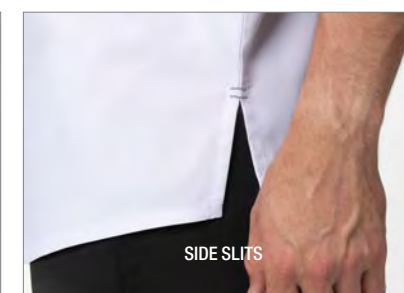
WHT  
white



RECYCLED STRETCH FABRICS



SNAP CLOSURE



SIDE SLITS

## TULUM UNISEX CHEF COAT

170 gm<sup>2</sup> / 5.0 oz. 100% recycled polyester knit mesh. 176 gm<sup>2</sup> / 5.2 oz. 31/31/38 recycled poly/poly/cotton made from recycled plastic bottles. Raglan sleeve with snap front closure. Left sleeve thermometer pocket with side slits, back collar apron tab and colour-matching Cool Vent™ knit mesh.

Available in: Black, Grey, White.

CBS01 | SIZES: S-4XL MF 1





New

TULUM



BLK  
black

GRY  
grey

WHT  
white

#### TULUM FEMALE CHEF COAT

170 gm<sup>2</sup> / 5.0 oz. 100% recycled polyester knit mesh. 176 gm<sup>2</sup> / 5.2 oz. 31/31/38 recycled poly/poly/cotton made from recycled plastic bottles. Raglan sleeve with snap front closure. Left sleeve thermometer pocket with side slits, back collar apron tab and colour-matching Cool Vent™ knit mesh.

Available in: Black, Grey, White.

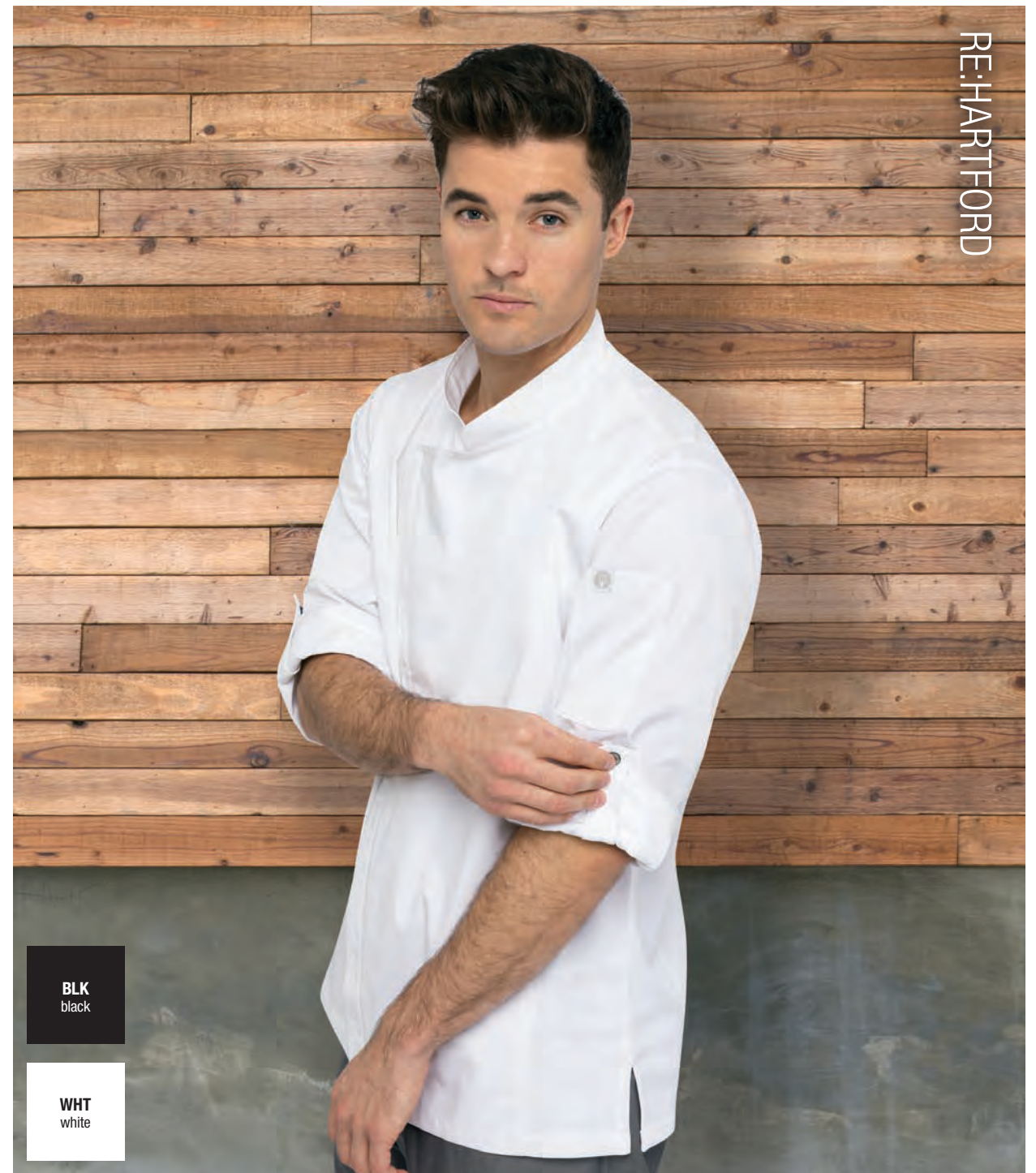
CBS01W | SIZE: XS-3XL **SF 1**

STRETCH

CoolVent

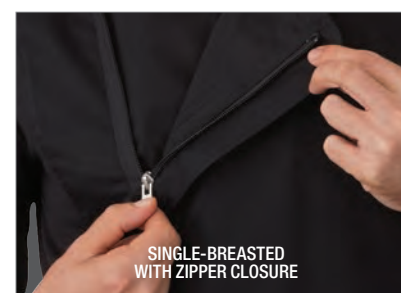
FLEX  
SERIES

RE:HARTFORD

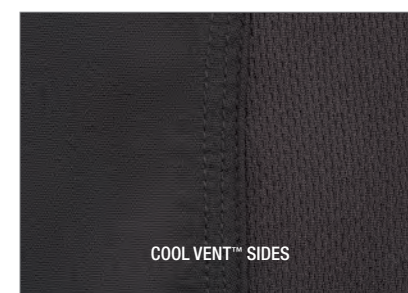


BLK  
black

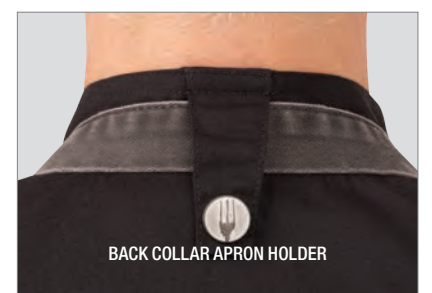
WHT  
white



SINGLE-BREASTED  
WITH ZIPPER CLOSURE



COOL VENT™ SIDES



BACK COLLAR APRON HOLDER

#### RE:HARTFORD ESSENTIAL CHEF COAT

160 gm<sup>2</sup> / 4.7 oz, 65/35 recycled poly/cotton 'Lite' twill fabric made from recycled plastic bottles, Cool Vent™ sides, seam slits, short-sleeve, single-breasted with zipper, back collar apron holder with fork engraved snap, left sleeve rounded thermometer pocket and right sleeve cell phone/notebook pocket.

Available in: Black, White.

REBCLZ | SIZES: XS-3XL **MF 1**

lite

CoolVent

Re:



Sustainable Collection

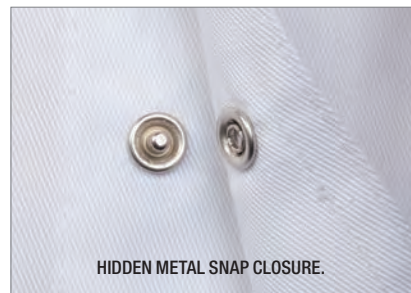




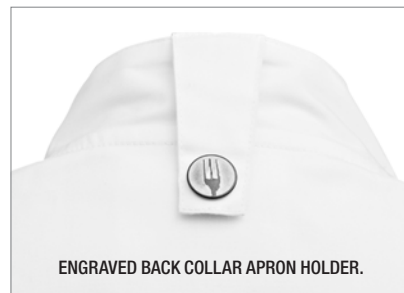
RE:CANNES

BLK  
black

WHT  
white



HIDDEN METAL SNAP CLOSURE.



ENGRAVED BACK COLLAR APRON HOLDER.



COOL VENT™ UNDERARM.

#### RE: CANNES ESSENTIAL SUSTAINABLE CHEF COAT

160 gm<sup>2</sup> / 4.7 oz 65/35 recycled poly/cotton. Cool Vent™ underarm panels, short sleeve, back collar apron holder, side seam slits, concealed snap front and left sleeve thermometer pocket

Available in: Black, White.

RESSN | SIZE: XS - 3XL



RE:BIB

BLK  
black

WHT  
white

BLK  
black

WHT  
white

#### RE:BIB APRON

210 gm<sup>2</sup> / 6.2 oz, 65/35 recycled poly/cotton made from recycled plastic bottles, no pocket essential simple bib apron

Available in: Black, White.

REAPK | SIZE: 86cm L x 61cm W

#### RE:ESSENTIAL CHEF COAT

210 gm<sup>2</sup> / 6.2 oz, 65/35 recycled poly/cotton made from recycled plastic bottles, long sleeve, double-breasted, turn-back cuffs, side-seam slits, left sleeve thermometer pocket

Available in: Black, White.

REWCCW | SIZES: XS-3XL CF 1







RE:BISTRO APRON

BLK  
black

WHT  
white

#### RE:BISTRO APRON

210 gm<sup>2</sup> / 6.2 oz. 65/35 recycled poly/cotton with front pocket including pencil divide.

Available in: Black, White.

REF24 | SIZE: 81cm L x 40cm W



RE:CHEF BIB

BLK  
black

WHT  
white

#### RE:CHEF BIB

210 gm<sup>2</sup> / 7.4 oz. 65/35 recycled poly/cotton adjustable by pulling ties.

Available in: Black, White.

REA100 | SIZE: 100cm L x 94cm W



RE:LIGHTWEIGHT SLIMFIT PANTS

BLK  
black



ELASTIC WAISTBAND  
WITH DRAWSTRING



2 SIDE SEAM POCKET



REAR PATCH POCKET

#### RE:LIGHTWEIGHT SLIMFIT PANTS

159 gm<sup>2</sup> / 4.7 oz, 65/35 recycled poly/cotton 'lite' twill fabric, contrast elastic waistband with internal drawstring, two front set-in pockets.

Available in: Black.

REPBN01 | SIZES: XS-3XL MF 1



RE:COOL VENT BEANIE

WHT  
white

BLK  
black



REDFCV - BLK



REDFCV - WHT

#### RE:COOL VENT™ BEANIE

210 gm<sup>2</sup> / 6.2 oz, 65/35 recycled poly/cotton base, Cool Vent™ mesh top, adjustable Velcro® closure, one size fits most.

Available in: Black, White.

REDFCV | SIZE: ONE SIZE FITS MOST







# Unisex Coat Collection

As the modern chef continues to evolve, so too does our extensive chef coat collection. Whether you are building a strong uniform foundation with our Essential Coat Collection or choosing from our fine range of luxurious fabrics and polished details of our Executive Coat Collection – there is a look for everyone in the kitchen with Chef Works

Left: Chef Phillip Esteban, CH Projects  
Right: Chef Thiago Silva, CHEW Innovation, USA  
HARTFORD CHEF COAT | BCLZ008-BLK/BLU



New

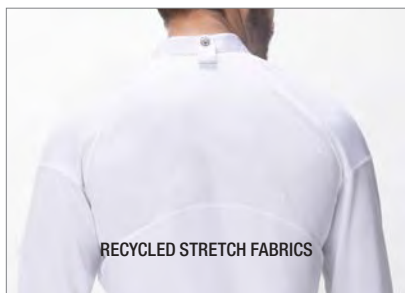
TULUM



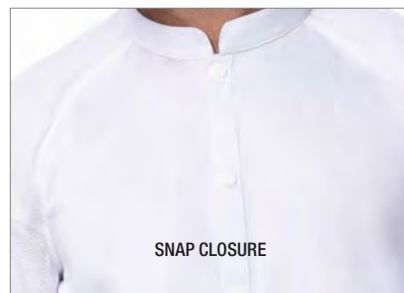
BLK  
black

GRY  
grey

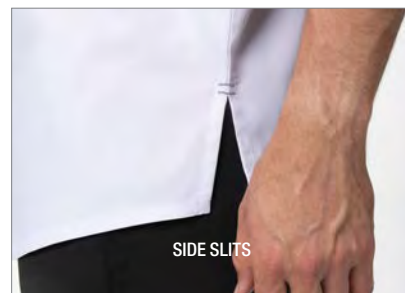
WHT  
white



RECYCLED STRETCH FABRICS



SNAP CLOSURE



SIDE SLITS

#### TULUM UNISEX CHEF COAT

170 gm<sup>2</sup> / 5.0 oz. 100% recycled polyester knit mesh. 176gm<sup>2</sup>/5.2oz. 31/31/38 recycled poly/poly/cotton made from recycled plastic bottles. Raglan sleeve with snap front closure. Left sleeve thermometer pocket with side slits, back collar apron tab and colour-matching Cool Vent™ knit mesh.

Available in: Black, Grey, White.

CBS01 | SIZES: S-4XL MF 1

STRETCH

CoolVent

FLEX  
SERIES



Unisex Coat Collection

New

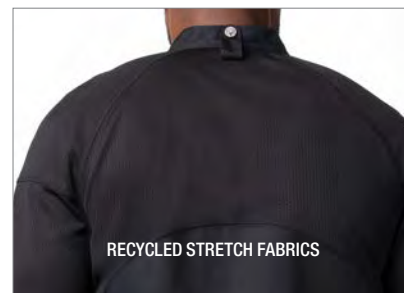
TULUM



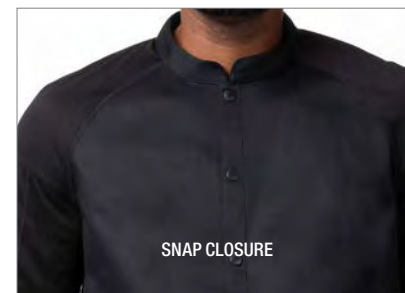
BLK  
black

WHT  
white

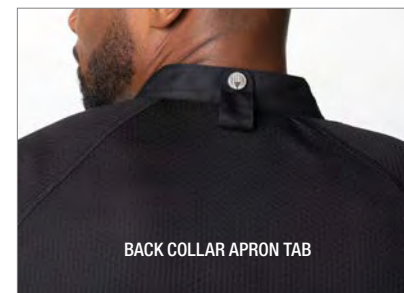
GRY  
grey



RECYCLED STRETCH FABRICS



SNAP CLOSURE



BACK COLLAR APRON TAB

#### TULUM UNISEX CHEF COAT

170 gm<sup>2</sup> / 5.0 oz. 100% recycled polyester knit mesh. 176gm<sup>2</sup> /5.2 oz. 31/31/38 recycled poly/poly/cotton. Raglan sleeve with snap front closure. Left sleeve thermometer pocket with side slits, back collar apron tab and colour-matching Cool Vent™ knit mesh.

Available in: Black, White, Grey.

CBS01 | SIZES: S-4XL MF 1

STRETCH

CoolVent

FLEX  
SERIES



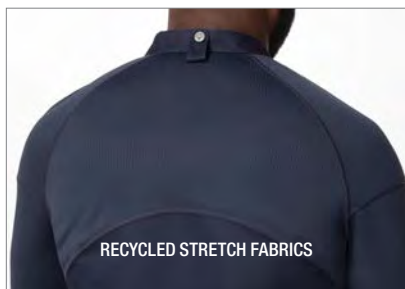
TULUM



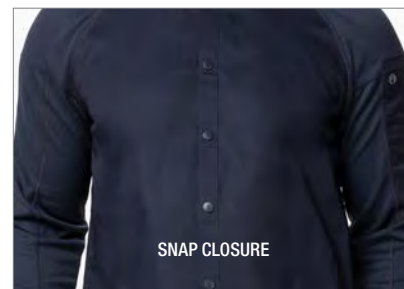
BLK  
black

WHT  
white

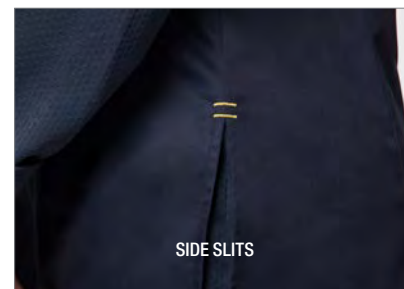
GRY  
grey



RECYCLED STRETCH FABRICS



SNAP CLOSURE



SIDE SLITS

#### TULUM UNISEX CHEF COAT

170 gm<sup>2</sup> / 5.0 oz. 100% recycled polyester knit mesh. 176gm<sup>2</sup> / 5.2 oz. 31/31/38 recycled poly/poly/cotton. Raglan sleeve with snap front closure. Left sleeve thermometer pocket with side slits, back collar apron tab and colour-matching Cool Vent™ knit mesh.

Available in: Black, White, Grey.

CBS01 | SIZES: S-4XL MF 1

STRETCH

Cool Vent

FLEX  
SERIES

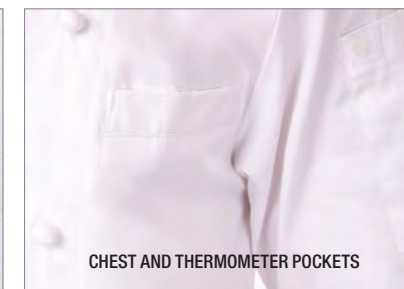
CAPRI



WHT  
white



HAND-ROLLED BUTTONS



CHEST AND THERMOMETER POCKETS

#### CAPRI PREMIUM COTTON CHEF COAT

180 gm<sup>2</sup> / 5.3 oz, 100% Super Combed 120 cotton, short-sleeve, hand-rolled buttons, left chest inset and thermometer pockets

Available in: White.

ECSS | SIZES: 34-58 CF 2

SUPER  
COMBED 120

Chef Chad Kilgore, Cup of Dreams Foundation, San Diego, USA





**WHT**  
white

#### MADRID PREMIUM COTTON CHEF COAT

180 gm<sup>2</sup> / 5.4 oz, 100% Super Combed 120 cotton, French cuffs, underarm vents, hand-rolled buttons, left chest inset pocket and thermometer pocket.

Available in: White.

ECHR | SIZES: 34-62 **CF 2**

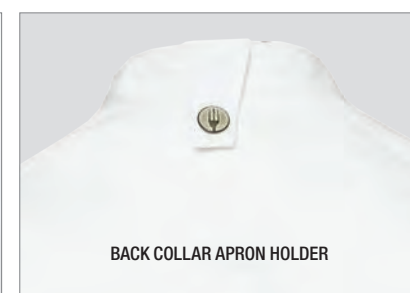
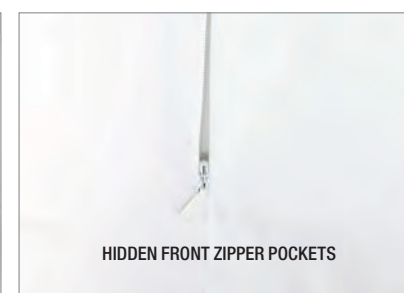


**SUPER  
COMBED  
120**



**BLK**  
black

**WHT**  
white



#### VALENCIA EXECUTIVE CHEF COAT

159 gm<sup>2</sup> / 4.7 oz, 65/35 poly/cotton 'Lite' twill fabric, contrast fabric design with stretch knit and Cool Vent™ panels, piping detail along sleeve seam, single-breasted with concealed snap closure, long-sleeve with turn-back cuffs, side-seam slits, back-collar apron holder with engraved snap tab, hidden front zipper pockets, left and right sleeve pockets.

Available in: Black, White.

**CES04** | SIZES: S-3XL **MF 1**



**lite**

**Cool Vent**

**ChefWorks  
URBAN  
COLLECTION**





BLK  
black

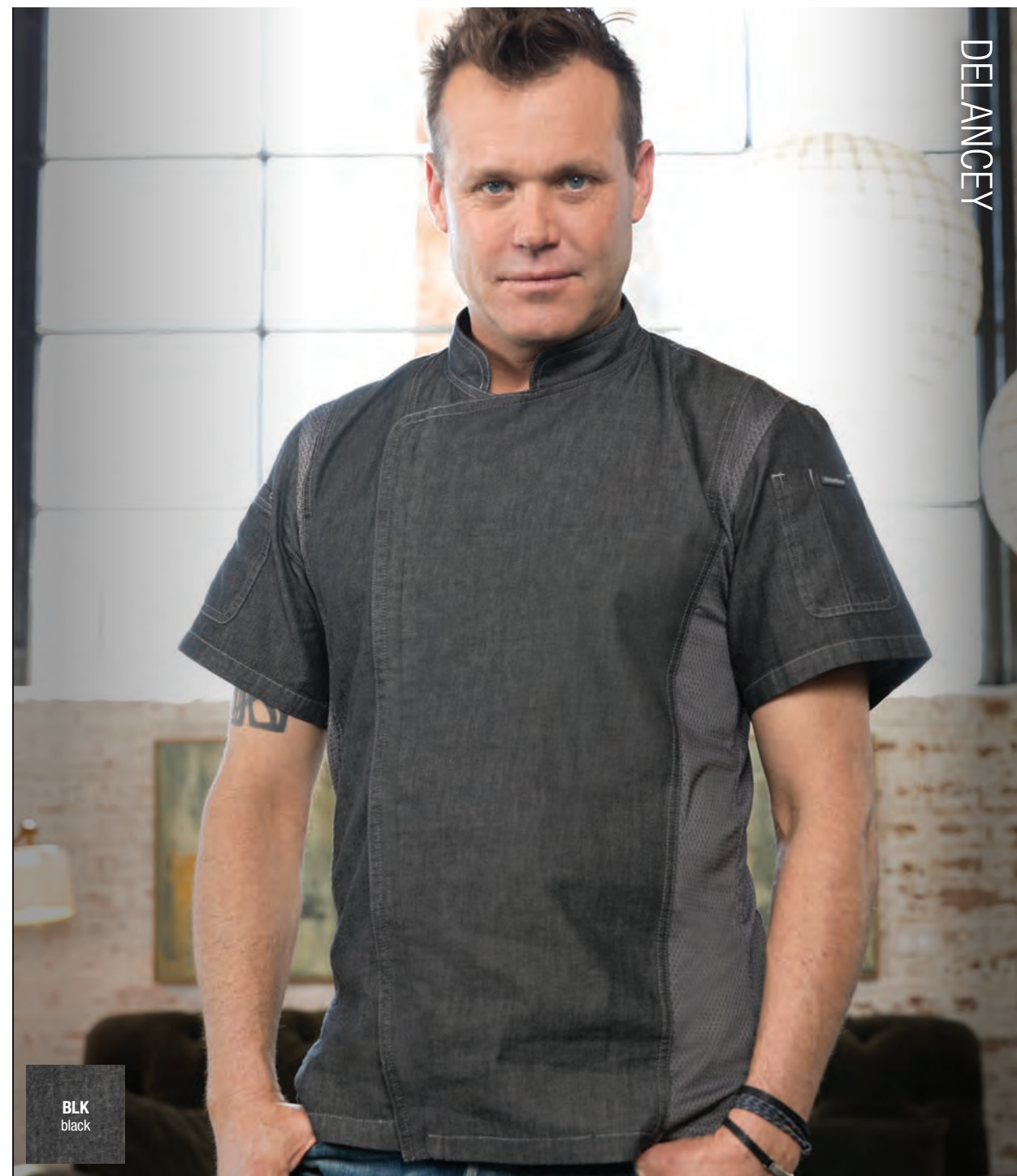
IBL  
indigo blue

#### GRAMERCY EXECUTIVE CHEF COAT

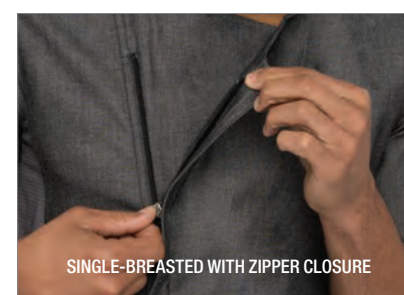
163 gm<sup>2</sup> / 4.8 oz, 100% cotton denim fabric, single-breasted with two-way separating zipper, roll-up long sleeve with tab, back collar apron holder with fork engraved snap, contrast double-stitching throughout, left sleeve rounded thermometer pocket and right sleeve rounded cell phone/notebook pocket with hidden earphone wires hole. Women's fit available EXWDZ002 (see page 40).

Available in: Black, Indigo Blue.

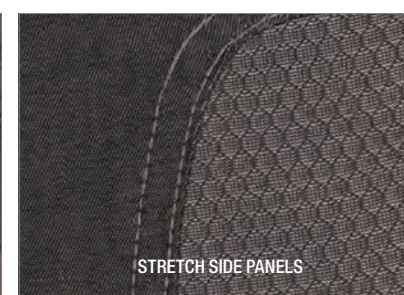
EXDZ001 | SIZES: XS-3XL (Black 4XL) **MF 1**



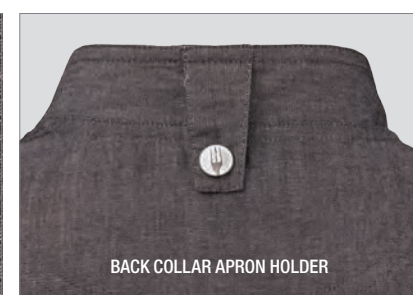
BLK  
black



SINGLE-BREASTED WITH ZIPPER CLOSURE



STRETCH SIDE PANELS



BACK COLLAR APRON HOLDER

#### DELANCEY EXECUTIVE CHEF COAT

163 gm<sup>2</sup> / 4.8 oz, 100% cotton denim with stretch side panels, short-sleeve, single-breasted with zipper closure, side seam slits, back collar apron holder with engraved snap, left sleeve thermometer pocket, right sleeve cell phone pocket.

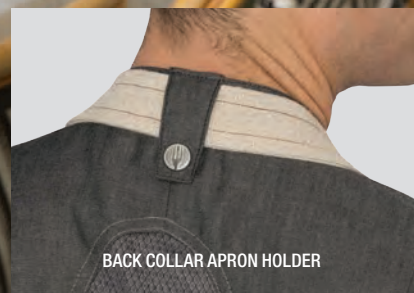
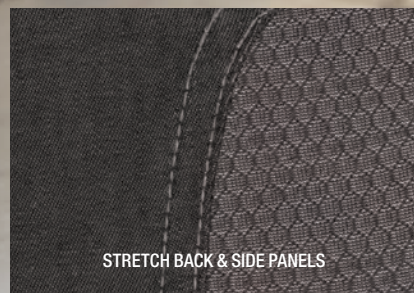
Available in: Black.

CEZ01 | SIZES: S-3XL **MF 1**





BLK  
black



#### TRIBECA EXECUTIVE CHEF COAT

163 gm<sup>2</sup> / 4.8 oz, 100% cotton denim with stretch back & side panels, short-sleeve, single-breasted with snap closure, side seam slits, back collar apron holder with engraved snap, left sleeve thermometer pocket, right sleeve pocket, hidden front zipper pockets. Women's style available CES05W (see page 41).

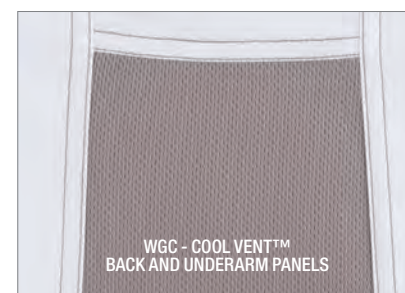
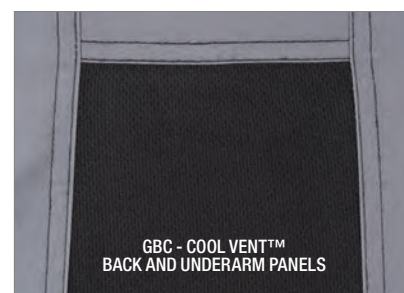
Available in: Black.

CES01 | SIZES: S-3XL **MF 1**



GBC  
grey/black

WGC  
white/grey



#### VALAIS EXECUTIVE CHEF COAT

160 gm<sup>2</sup> / 4.7 oz, 65/35 poly/cotton 'lite' twill fabric, Cool Vent™ back and underarm panels, short-sleeve, single-breasted, contrast topstitching, side seam slits, cloth-covered buttons, left chest patch and thermometer pockets.

Available in: Grey/Black, White/Grey.

VSSS | SIZES: S-3XL **CF 1**





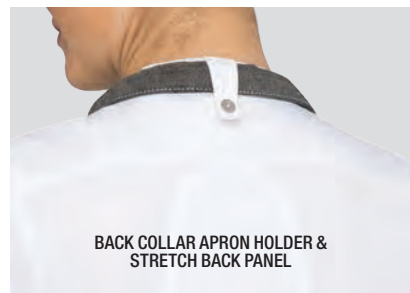


BLK  
black

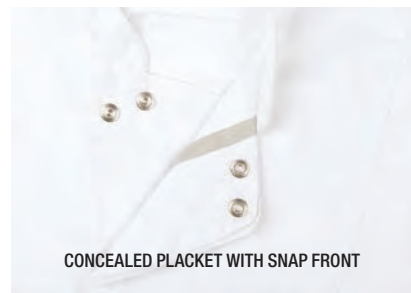
WHT  
white



HIDDEN FRONT ZIPPER POCKETS



BACK COLLAR APRON HOLDER &  
STRETCH BACK PANEL



CONCEALED PLACKET WITH SNAP FRONT

#### BRISTOL EXECUTIVE CHEF COAT

159 gm<sup>2</sup> / 4.7 oz, 65/35 poly/cotton 'lite' twill fabric, Cool Vent™ sides and back panels, short-sleeve, single-breasted with concealed snap closure, side seam slits, back collar apron holder with engraved snap tab, left sleeve thermometer pocket, hidden front zipper pockets. Women's fit & style available CES02W (not featured).

Available in: Black, White.

**CES02** | SIZES: S-3XL **MF 1**



Chef Aiden Byrne, The Church Green, Cheshire, UK

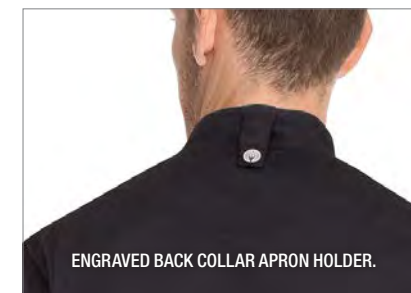


BLK  
black

GRY  
grey

INB  
ink blue

WHT  
white



ENGRAVED BACK COLLAR APRON HOLDER.



COOL VENT™ UNDERARM



HIDDEN ZIPPER CLOSURE

#### SPRINGFIELD ESSENTIAL CHEF COAT

160 gm<sup>2</sup> / 4.7 oz, 65/35 poly/cotton 'Lite' twill fabric, Cool Vent™ sides, side seam slits, short-sleeve, single-breasted with zipper, back collar apron holder with fork engraved snap, left sleeve rounded thermometer pocket and right sleeve rounded cell phone/notebook pocket. Women's fit available (see page 42).

Available in: Black, Grey, Ink Blue, White.

**BCSZ009** | SIZES: XS-3XL (BLK 4XL, WHT 5XL) **MF 1**



Chef Matt Healy, Leeds UK





- BLK  
black
- BLU  
blue
- GPG  
graphite
- GRY  
grey
- WHT  
white

Chef Thiago Silva, CHEW Innovation, USA

#### HARTFORD ESSENTIAL CHEF COAT

160 gm<sup>2</sup> / 4.7 oz, 65/35 poly/cotton 'lite' twill fabric, Cool Vent™ sides and side seam slits, single-breasted with two-way separating zipper, roll-up long sleeve with tab, back collar apron holder with engraved snap, left sleeve rounded thermometer pocket and right sleeve rounded cell phone/notebook pocket. Women's fit available BCWLZ005 (see page 39).

Available in: Black, Blue, Graphite, Grey, White.

**BCLZ008** | SIZES: XS-3XL (BLK-6XL, GPG-6XL, WHT-6XL) **MF 1**







GRY  
grey

WHT  
white

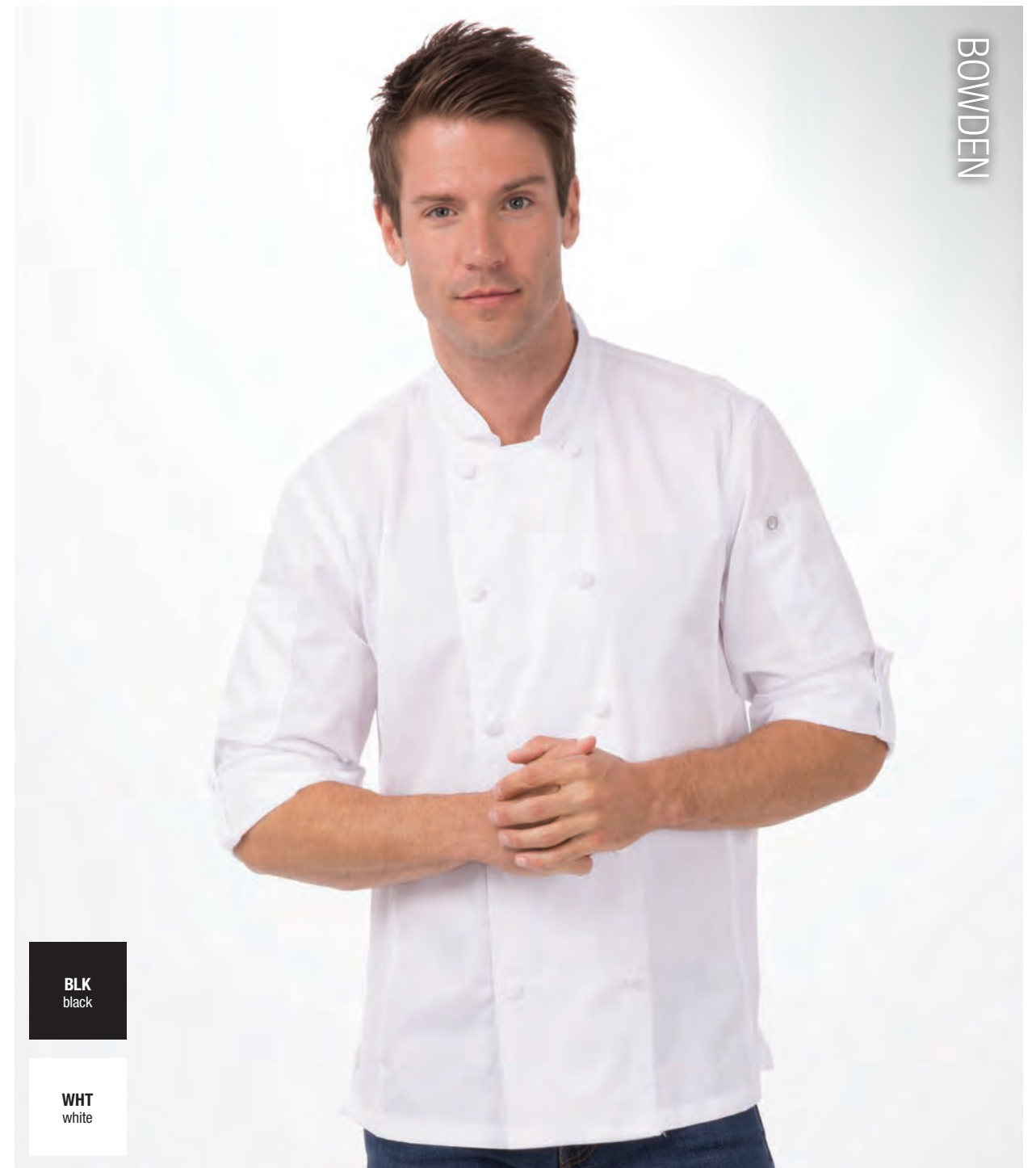
CONCEALED SNAP FRONT CLOSURE

#### LANSGING ESSENTIAL CHEF COAT

160 gm<sup>2</sup> / 4.7 oz, 65/35 poly/cotton 'Lite' twill fabric, Cool Vent™ back/side panels, roll-up long sleeve with tab, side seam slits, concealed snap front and left sleeve thermometer pocket. Women's fit available BCWMC007 (see page 39).

Available in: Grey, White.

BCMC010 | SIZES: XS-3XL **CF 1**



BLK  
black

WHT  
white

ROLL-UP LONG SLEEVE WITH BUTTON TAB

WHITE COLLAR APRON HOLDER

#### BOWDEN ESSENTIAL CHEF COAT

160 gm<sup>2</sup> / 4.7 oz, 65/35 poly/cotton 'lite' twill fabric, Cool Vent™ side panels, side seam slits, roll-up long sleeve with tab, white collar apron holder with fork engraved snap, left sleeve thermometer pocket, right sleeve pocket, inner pocket.

Available in: White, Black.

CBC01 | SIZES: S-3XL **MF 1**







BLK  
black

WHT  
white

GRY  
grey

#### MONTREAL ESSENTIAL CHEF COAT

160 gm<sup>2</sup> / 4.7 oz, 65/35 poly/cotton 'lite' twill fabric, Cool Vent™ panel, short-sleeve, cloth-covered buttons, left chest patch and thermometer pockets.

Available in: Black, White, Grey.

JLCV | SIZES: XS-5XL (WHT-6XL) **CF 1**

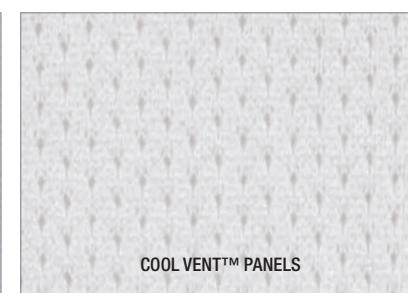


Chef Phil Esteban, The Cork & Craft



BLK  
black

WHT  
white



#### CALGARY ESSENTIAL CHEF COAT

160 gm<sup>2</sup> / 4.7 oz, 65/35 poly/cotton 'lite' twill fabric, Cool Vent™ panel, turn-back cuffs, cloth-covered buttons, left chest patch and thermometer pockets.

Available in: Black, White.

JLLS | SIZES: XXS-5XL **CF 1**



Chef Ramon Douglas, RF Catering & Chatsworth Charter High School, Los Angeles, USA



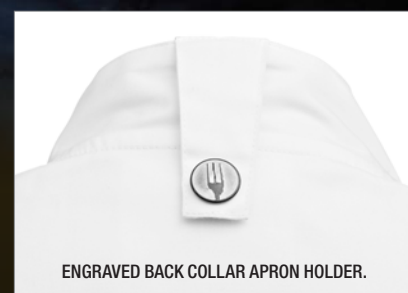


**BLK**  
black

**WHT**  
white



HIDDEN METAL SNAP CLOSURE.



ENGRAVED BACK COLLAR APRON HOLDER.



COOL VENT™ UNDERARM.

### CANNES ESSENTIAL CHEF COAT

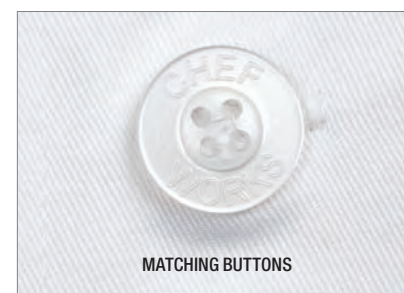
160 gm<sup>2</sup> / 4.7 oz 65/35 poly/cotton single-breasted short sleeve coat with snap closure, Cool Vent™ underarm panels, back-collar apron holder with engraved snap tab, side-seam slits, left sleeve thermometer pocket.

Available in: Black, White.

SSSN | SIZES: XS-3XL **MF 1**



**WHT**  
white



MATCHING BUTTONS



TURN-BACK CUFFS

### LE MANS ESSENTIAL CHEF COAT

210 gm<sup>2</sup> / 6.2 oz, 65/35 poly/cotton, turn-back cuffs, matching translucent buttons, left chest patch and thermometer pockets. Women's fit available in black (BCW004-BLK) and white (BCW004-WHT) not featured.

Available in: White.

WCCW | SIZES: XXS-8XL **CF 1**





**BLK**  
black

#### CHAMBERY ESSENTIAL CHEF COAT

210 gm<sup>2</sup> / 6.2 oz, 65/35 poly/cotton, short-sleeve, matching branded buttons, left chest patch pocket and thermometer pocket.

Available in: Black.

**BLSS** | SIZES: XS-5XL **CF 1**



**WHT**  
white



MATCHING BUTTONS

#### VOLNAY ESSENTIAL CHEF COAT

210 gm<sup>2</sup> / 6.2 oz, 65/35 poly/cotton, short-sleeve, matching translucent branded buttons, left chest patch and thermometer pockets.

Available in: White.

**PCSS** | SIZES: XS-5XL **CF 1**





# Women's Coat Collection

Featuring expertly tailored coats cut to accommodate and complement the female shape. With elements such as slimmed side panels and tapered waists, this collection celebrates the female form with both style and performance

Chef Kalissa Krejcik, C&M Café, USA  
Women's Roxby Chef Coat: CES02W-WHT

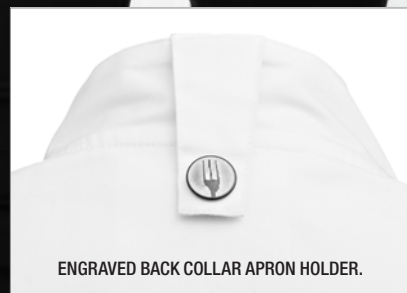


New

TULUM



SIDE SLITS WITH KNITTED MESH



ENGRAVED BACK COLLAR APRON HOLDER.



THERMOMETER POCKET ON LEFT SLEEVE



Women's Coat Collection

TULUM



BLK  
black

WHT  
white

GRY  
grey

#### TULUM FEMALE CHEF COAT

170 gm<sup>2</sup>/5.0 oz. 100% recycled polyester knit mesh. 176 gm<sup>2</sup> /5.2 oz. 31/31/38 recycled poly/poly/cotton. Raglan sleeve with snap front closure. Left sleeve thermometer pocket with side slits, back collar apron tab and colour-matching Cool Vent™ knit mesh.

Available in: Black, White, Grey.

CBS01W | SIZE: XS-3XL **SF 1**

STRETCH

CoolVent

FLEX  
SERIES



BLK  
black

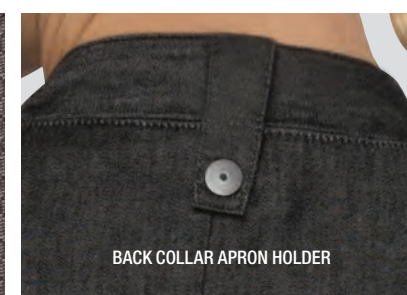
## GRAMERCY EXECUTIVE CHEF COAT

163 gm<sup>2</sup> / 4.8 oz, 100% cotton denim fabric, single-breasted with two-way separating zipper, roll-up long sleeve with tab, back collar apron holder with fork engraved snap, contrast double-stitching throughout, French cuffs, left sleeve rounded thermometer pocket and right sleeve rounded cell phone/notebook pocket with hidden earphone hole. Unisex version available EXDZ001 (see page 20).

Available in: Black.

EXWDZ002 | SIZES: XS-2XL **SF 1**

STRETCH BACK &amp; SIDE PANELS



BACK COLLAR APRON HOLDER

BLK  
black

## CHELSEA EXECUTIVE CHEF COAT

163 gm<sup>2</sup> / 4.8 oz, 100% cotton denim with stretch back & side panels, short-sleeve, single-breasted with snap closure, side seam slits, back collar apron holder with engraved snap tab, left sleeve thermometer pocket, right sleeve pocket, curved front hip pockets. Unisex style available, CES01 (see page 22).

Available in: Black.

CES05W | SIZES: XS-2XL **SF 1**





BLK  
black

GRY  
grey

WHT  
white

#### SPRINGFIELD ESSENTIAL CHEF COAT

160 gm<sup>2</sup> / 4.7 oz, 65/35 poly/cotton 'Lite' twill fabric, Cool Vent™ sides, side seam slits, short-sleeve, single-breasted with two-way zipper, back collar apron holder with engraved snap, left sleeve rounded thermometer and right sleeve rounded cell phone/notebook pockets. Unisex style available BCSZ009 (see page 25).

Available in: Black, Grey, White.

BCWSZ006 | SIZES: XS-2XL **SF 1**



BLK  
black

BLU  
blue

GRY  
grey

WHT  
white

#### HARTFORD ESSENTIAL CHEF COAT

160 gm<sup>2</sup> / 4.7 oz, 65/35 poly/cotton 'Lite' twill fabric, Cool Vent™ sides and side seam slits, single-breasted with two-way separating zipper, roll-up long sleeve with tab, back collar apron holder with engraved snap, left sleeve rounded thermometer pocket and right sleeve rounded cell phone/notebook pocket. Unisex style available BCLZ008 (see page 27).

Available in: Black, Blue, Grey, White.

BCWLZ005 | SIZES: XS-3XL **SF 1**







GRY  
grey

WHT  
white

CONCEALED SNAP FRONT CLOSURE

COOL VENT™ SIDES

#### LANSING ESSENTIAL CHEF COAT

160 gm<sup>2</sup> / 4.7 oz, 65/35 poly/cotton 'Lite' twill fabric, Cool Vent™, back/side panels, roll-up long sleeve with tab, side seam slits, concealed snap front, left sleeve thermometer pocket. Unisex style available BCMC010 (see page 26).

Available in: Grey, White.

BCWMC007 | SIZES: XS-2XL **SF 1**



CLOTH-COVERED BUTTONS

THERMOMETER POCKET

#### SOFIA ESSENTIAL CHEF COAT

160 gm<sup>2</sup> / 4.7 oz, 65/35 poly/cotton 'lite' twill fabric, turn-back cuffs, side seam slits, cloth-covered buttons, thermometer pocket

Available in: White.

LWLJ | SIZES: XS-2XL **CF 1**







# Trouser Collection

Utilitarian at it's core with contemporary and tailored options, our Trouser Collection has a style and fit that will work for you. Functionality and comfort for both the back and front-of-house teams

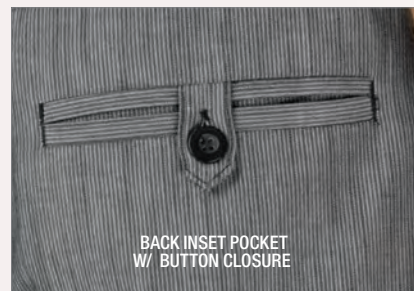


# JOGGER 257

**BWS**  
black/white  
stripe



ELASTIC LEG OPENING



BACK INSET POCKET  
W/ BUTTON CLOSURE



FRONT INSET POCKETS W/ RIVETED ENDS  
AND COINS POCKET



## JOGGER 257

166 gm<sup>2</sup> / 4.9 oz, 76/24 cotton/poly, elastic waistband, internal flat drawstring, zipper fly, front inset pockets, coins pocket, elastic leg opening, back yoke, a back inset pocket with button, belt loops.

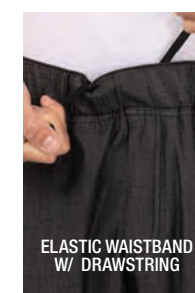
**Available in:** Black/White Stripe.

**PBE01** | SIZES: XS-3XL LENGTH: 31 inch **MT 1**



# GRAMERCY 261

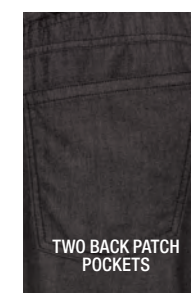
**BLK**  
black



ELASTIC WAISTBAND  
W/ DRAWSTRING



FRONT POCKETS W/  
RIVETED ENDS



TWO BACK PATCH  
POCKETS

## GRAMERCY 261

163 gm<sup>2</sup> / 4.8 oz, 100% cotton, elastic waistband with drawstring, zipper fly, front pockets with riveted ends, coins pocket, two back patch pockets, belt loops.

**Available in:** Black.

**PEE01** | SIZES: XS-3XL LENGTH: 31 inch **MT 1**

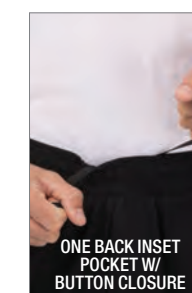


**ChefWorks**  
**URBAN**  
COLLECTION



# BETTER BUILT™ BAGGY

**BLK**  
black



ONE BACK INSET  
POCKET W/  
BUTTON CLOSURE



ONE BACK INSET  
POCKET W/ BUTTON  
CLOSURE

## BETTER BUILT™ BAGGY

185 gm<sup>2</sup> / 5.5 oz, 65/35 poly/cotton, built-in flat drawstring, elastic waistband, zipper fly, built-in cell phone, two side seam and two back patch pockets.

**Available in:** Black.

**BSOL** | SIZES: XS-4XL LENGTH: 32.5 inch **MF 1**



*Trouser Collection*



## CARGO

BLK  
black

ELASTIC WAISTBAND WITH DRAWSTRING

2 BACK PATCH POCKETS

2 SIDE CARGO POCKETS  
W/ VELCRO® CLOSURES

### CARGO

245 gm<sup>2</sup> / 7.2 oz, 100% cotton, new and improved slimmer fit, elastic waistband with drawstring, full zipper fly, two side seam, two back and two side cargo pockets with Velcro® closures.

Available in: Black.

PC001 | SIZES: XS-4XL LENGTH: 32 inch **CF 1**

## ESSENTIAL PRO

BLK  
black

TWO-BUTTON CLOSURE

WIDE BELT LOOPS

2 BACK PATCH & CELL  
PHONE POCKETS  
BUTTON CLOSURE

### ESSENTIAL PRO

185 gm<sup>2</sup> / 5.5 oz, 65/35 poly/cotton, double-needle stitch detail, flat waistband, wide belt loops, two-button closure, zipper fly, two side seam pockets, two back patch and back inset cell phone pockets.

Available in: Black.

PS005 | SIZES: 28-48 LENGTH: 32.5 inch **MF 2**

## COOL VENT™ BAGGY

BLK  
black

ELASTIC WAISTBAND  
W/ DRAWSTRING

KNEE COOL VENT™  
DETAIL

REAR COOL VENT™  
PATCH POCKET

### COOL VENT™ BAGGY

160gm<sup>2</sup> / 4.7 oz, 65/35 poly/cotton 'Lite' twill fabric, Cool Vent™ side seam, back-of-knee and two back pockets inserts, elastic drawstring waistband, zipper fly, two side seam pockets.

Available in: Black.

CVBP | SIZES: XS-3XL L: 32.5 inch **MF 1**







BLK  
black



CHR  
charcoal

BLK  
black



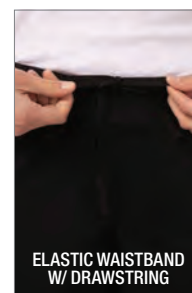
ELASTIC WAISTBAND  
W/ DRAWSTRING



FRONT POCKETS W/  
RIVETED ENDS



2 BACK PATCH  
POCKETS



ELASTIC WAISTBAND  
W/ DRAWSTRING



2 SIDE SEAM POCKET

#### LIGHTWEIGHT BAGGY

160 gm<sup>2</sup> / 4.7 oz, 65/35 poly/cotton 'lite' twill fabric, double-needle topstitching, curved elastic flat drawstring waistband, zipper fly, cell phone pocket, two side seam and two oversized back pockets.

Available in: Black.



**BBLW** | SIZES: XS-3XL LENGTH: 32.5 inch **MF 1**

#### LIGHTWEIGHT SLIMFIT / WOMEN'S LIGHTWEIGHT SLIMFIT

159 gm<sup>2</sup> / 4.7 oz, 65/35 poly/cotton 'Lite' twill fabric, contrast elastic waistband with internal drawstring, two front set-in pockets.

Available in: Black, Charcoal.



**PBN01 PBN01W** | SIZES: XS-3XL LENGTH: 31 inch **MF 1**



SCH  
small black/  
white check

BLK  
black

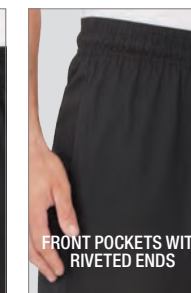


SCH  
small black/  
white check

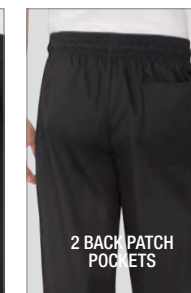
BLK  
black



ZIPPER FLY



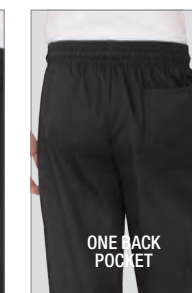
FRONT POCKETS WITH  
RIVETED ENDS



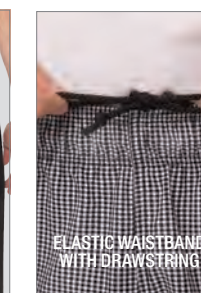
2 BACK PATCH  
POCKETS



2 SIDE SEAM POCKET



ONE BACK  
POCKET



ELASTIC WAISTBAND  
WITH DRAWSTRING

#### ESSENTIAL BAGGY W/ ZIPPER

210 gm<sup>2</sup> / 6.2 oz, 65/35 yarn-dyed poly/cotton, elastic waistband with drawstring, zipper fly, tapered legs, two side seam and one back pocket.

Available in: NBBZ: Black. NBMZ: Black/White Check.

**NBBZ** | SIZES: XS-7XL **NBMZ** | SIZES: XS-5XL LENGTH: 32 inch **CF 1**

#### ESSENTIAL BAGGY

210 gm<sup>2</sup> / 6.2 oz, 65/35 yarn-dyed poly/cotton, elastic waistband with drawstring, tapered legs, two side seam and one back pocket.

Available in: NBBP: Black. NBCP: Black/ White Check.

**NBBP** | SIZES: XXS-7XL **NBCP** | SIZES: XXS-8XL LENGTH: 32 inch **CF 1**





WOMEN'S CARGO

BLK  
black



WOMEN'S ESSENTIAL BAGGY

BLK  
black



2 SIDE CARGO POCKETS  
W/ VELCRO® CLOSURES



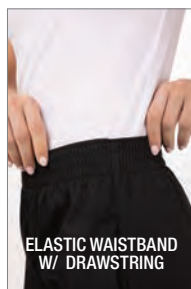
2 BACK PATCH POCKETS

#### WOMEN'S CARGO

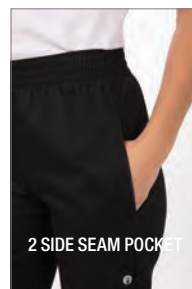
210 gm<sup>2</sup> / 6.2 oz, 65/35 poly/cotton, elastic waistband with drawstring, right leg cargo pocket with Velcro® flap, two front and two back pockets with Velcro® flaps.

Available in: Black.

CPWO | SIZES: XS-3XL LENGTH: 31.5" RF 1



ELASTIC WAISTBAND  
W/ DRAWSTRING



2 SIDE SEAM POCKET

#### WOMEN'S ESSENTIAL BAGGY

210 gm<sup>2</sup> / 6.2 oz, 65/35 poly/cotton, elastic waistband and two side seam pockets.

Available in: Black.

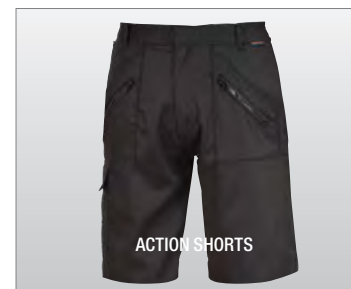
PW005 | SIZES: XS-3XL LENGTH: 31.5" RF 1



ACTION TROUSERS

Black

Navy



ACTION SHORTS



#### ACTION TROUSERS

245 gm<sup>2</sup> / 7.2 oz, 65/35 poly/cotton, reinforced seat and knee pad pockets, twin-stitched seams, belt loops, multi-zip side pockets, thigh pocket with hook and loop fastening, two hip pockets **Wash:** 60°C  
Available in: Black, Navy. Also available in: Action Shorts PW103.

PW101 | SIZES: 30R-46L LENGTH: Reg 31". Long 33"



CHINO SHORTS

Black

Cherry Red

Natural

Navy

Slate

White

ASQUITH & FOX®

#### UNISEX CHINO SHORTS

275 gm<sup>2</sup> / 8.1 oz, 100% cotton twill constructed shorts, flat front with belt loops, two front and two back inset pockets with buttons.

Available in: Black, Cherry Red, Natural, Navy, Slate, White.  
Female style available code: AQ061

AQ051 | SIZES: XS - 4XL LENGTH: 9"/23cm





HOUSTON



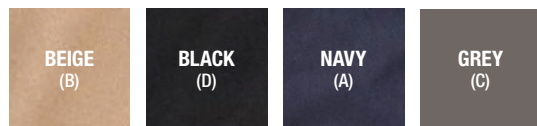
BRUNSWICK



MEN'S CHINO



WOMEN'S CHINO



#### HOUSTON FEMALE SLIM LEG CHINOS

97/3 cotton/elastane, slim leg chinos with belt loops, side pockets, twin hip jet pockets, stretch waistband. Matching skirt available, AUSTIN 2302.

**Available in:** Beige (B), Black (D), Navy (A), Grey (C).

**2303** | **SIZES:** 6 - 24 **LENGTH:** Short 27" Reg 29" Long 31" XL 33" Unfinished 36".

#### BRUNSWICK TAILORED 5 POCKET CHINO

350 gm<sup>2</sup> 97/3 cotton/elastane chino trouser with stretch waistband, five pockets with metal studs.

**Available in:** Beige (B), Black (D) Navy (A). Grey (C) (only in Slim and Classic cuts)

**8902** | **SIZES:** 28"-42" **LENGTH:** Short 29.5" Reg 31.5" Long 33" Unfinished 36".

#### MEN'S/UNISEX CHINO

275 gm<sup>2</sup> / 8.1oz, 100% cotton twill, classic fit, belt loops, two front inset pockets and two inset buttoned back pockets.

**Available in:** Black, Burgundy, Khaki, Natural, Navy, Royal, Slate, White.

**AQ050** | **SIZES:** XS - 4XL. **LENGTH:** Regular 32" Tall 34", Unfinished 34"

#### WOMEN'S CHINO

245 gm<sup>2</sup> / 7.2oz, 98/2 cotton/elastane, tailored fit, belt loops, two front inset and two back inset pockets.

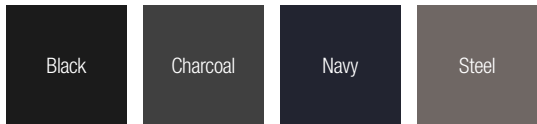
**Available in:** Black, Khaki, Natural, Navy, Royal, Slate, White.

**AQ060** | **SIZES:** 2XS - 2XL **LENGTH:** Regular 30"





PERFORMANCE CHINO JEANS



PERFORMANCE UNISEX CHINO JEANS

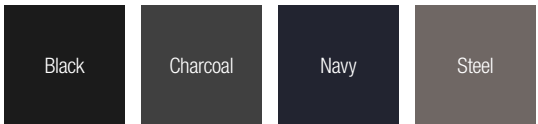
260 gm<sup>2</sup> / 7.7oz, 63/35/2 poly/cotton/elastane. Two front inset and two back pockets.

Available in: Black, Charcoal, Navy, Steel.

PR560 | SIZES: 30R - 44L LENGTH: Regular 31" Long 34"



WOMEN'S CHINO JEANS



PERFORMANCE WOMEN'S CHINO JEANS

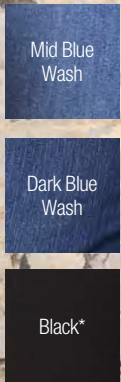
260 gm<sup>2</sup> / 7.7oz, 63/35/2 poly/cotton/elastane. Two front inset and two back pockets.

Available in: Black, Charcoal, Navy, Steel.

PR570 | SIZES: XS(8) - 5XL(24) LENGTH: Regular 31" Long 34"



KATY



KATY WOMEN'S STRAIGHT JEANS

305 gm<sup>2</sup> / 9oz, 67/31/2 cotton/poly/elastane (\*67/31/2 cotton/polyester/elastane), straight fit through leg, mid-rise, traditional five pocket, zip fly and button fastening.

Available in: Black, Dark Blue Wash, Light Blue Wash, Mid Blue Wash

SD011 | SIZES: 6R - 18L LENGTH: Reg 30" Long 32".



LARA

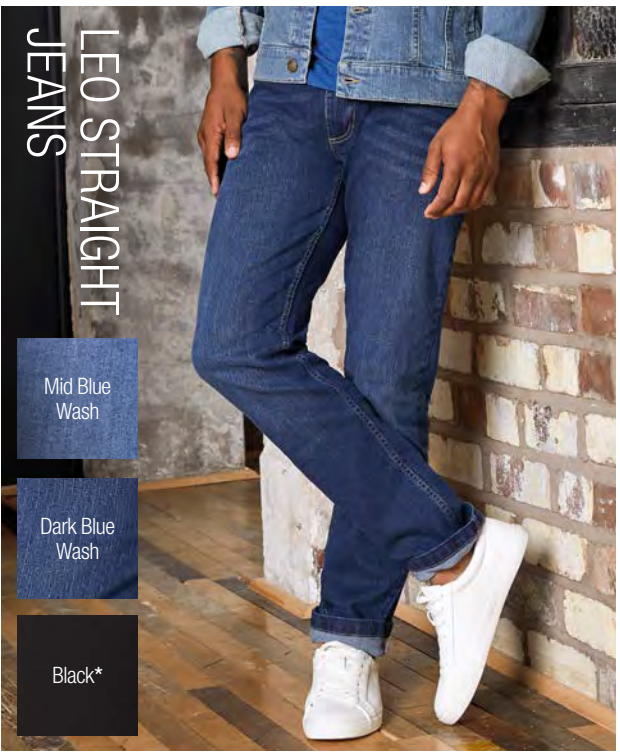


LARA WOMEN'S SKINNY JEANS

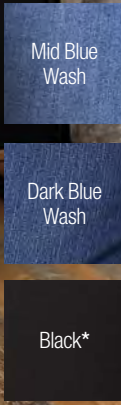
305 gm<sup>2</sup> / 9oz 98/2 cotton/elastane (\*77/21/2 cotton/poly/elastane), classic skinny fit through leg, mid-rise, traditional five pocket styling, belt loops.

Available in: Black, Dark Blue Wash, Light Blue Wash, Mid Blue Wash

SD014 | SIZES: 6R - 18L L: Short 28"(Black & Dk Blue only) Reg 30" Long 32".



LEO STRAIGHT JEANS



LEO STRAIGHT JEANS

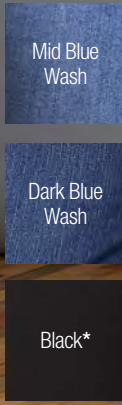
356 gm<sup>2</sup> / 10.5oz, 99 /1 cotton/elastane (\*67/31/2 cotton/polyester/elastane), straight fit, traditional five pocket styling, belt loops.

Available in: Black, Dark Blue Wash, Light Blue Wash, Mid Blue Wash.

SD001 | SIZES: 28 - 40 LENGTH: Reg 31". Long 33".



MAX SLIM JEANS



MAX SLIM JEANS

339 gm<sup>2</sup> / 10oz, 99/1 cotton/elastane (\*73/25/2 cotton/polyester/elastane), slim fit through the leg, traditional five pocket styling detail, belt loops, zip fly and button fastening.

Available in: Black, Dark Blue Wash, Light Blue Wash, Mid Blue Wash.

SD004 | SIZES: 28R - 40L LENGTH: Reg 31". Long 33".



Trouser Collection: Jeans



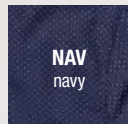
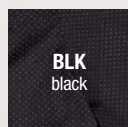


# Shirt & Top Collection

Look polished and professional no matter what the kitchen may throw your way. Our line-up of shirts and tops for chefs and hospitality staff offers ultimate comfort, durability and style in an array of classic or modern hues and fits

Largo Short Bib Apron **ABN01W-BLU**  
Largo Bib Apron **ABN01-BLU**  
Largo Half Bistro Apron **AHN05-BLU**  
Apron Neck Strap **XNS05**





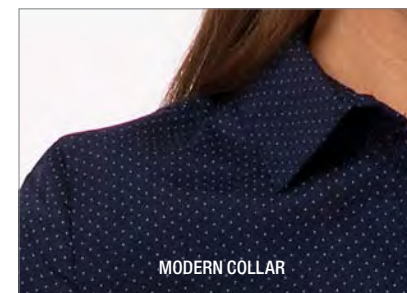
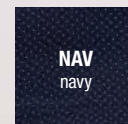
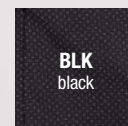
#### DECO CONTEMPORARY LONG-SLEEVE DOTTED SHIRT

115 gm<sup>2</sup> / 3.4oz 65/35 poly/cotton dot print, long sleeves, adjustable button cuffs, buttoned gauntlet, pleated back yoke.

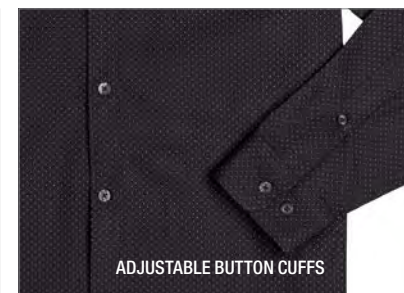
Available in: Black, Navy, White.

SFC01 | SIZES: S-4XL **CF 1**

 Chef Works  
**contemporary**  
collection



MODERN COLLAR



ADJUSTABLE BUTTON CUFFS

#### DECO CONTEMPORARY WOMEN'S LONG-SLEEVE DOTTED SHIRT

115 gm<sup>2</sup> / 3.4oz 65/35 poly/cotton dot print, long sleeves, adjustable button cuffs, buttoned gauntlet, front and back darts.

Available in: Black, Navy, White.

SFC01W | SIZES: XS-3XL **CF 1**

 Chef Works  
**contemporary**  
collection



FORMEL



BLK  
black

WHT  
white

#### FORMEL CONTEMPORARY MEN'S BANDED COLLAR SHIRT

130 gm<sup>2</sup> / 3.8 oz, 64/34/2 poly/cotton/elastane, banded collar with button closure tab, adjustable button cuffs, long sleeve, concealed button placket, back yoke. Women's style available SFB01W (see page 63).

Available in: Black, White.

SFB01 | SIZES: S-4XL **MF 1**

Chef Works<sup>®</sup>  
**contemporary**  
collection



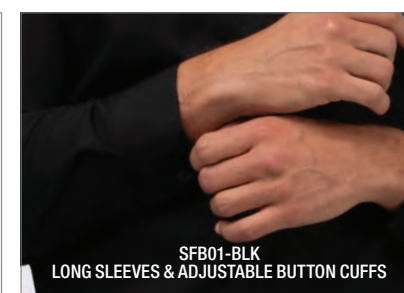
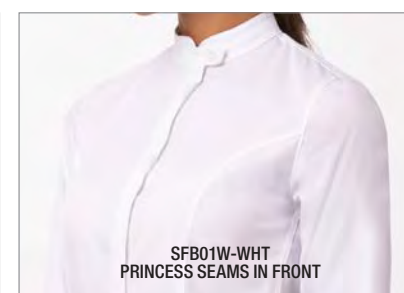
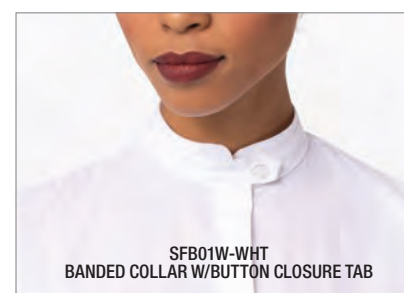
Shirt & Top Collection

FORMEL



BLK  
black

WHT  
white



#### FORMEL CONTEMPORARY WOMEN'S BANDED COLLAR SHIRT

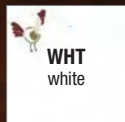
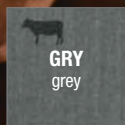
130 gm<sup>2</sup> / 3.8 oz, 64/34/2 poly/cotton/elastane, banded collar with button closure tab, concealed button placket, adjustable button cuffs, long sleeve, princess seams front and back, back yoke. Unisex style available SFB01 (see page 62).

Available in: Black, White.

SFB01W | SIZES: XS-3XL **MF 1**

Chef Works<sup>®</sup>  
**contemporary**  
collection





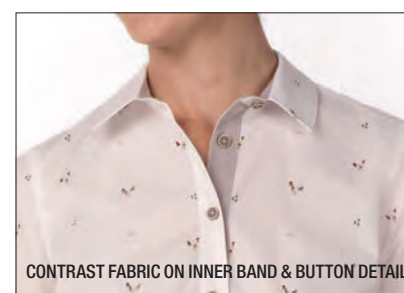
#### OMAHA URBAN MEN'S SHORT-SLEEVE SHIRT

115 gm<sup>2</sup> White & 119 gm<sup>2</sup> Grey, 65/35 poly/cotton, short sleeves, left chest pocket, back yoke with pleats, matching button front, contrast collar band, contrast inner-sleeve hem. Women's style available SHC10W (see page 65)

Available in: Grey, White.

SHC10 | SIZES: S-4XL CF 1

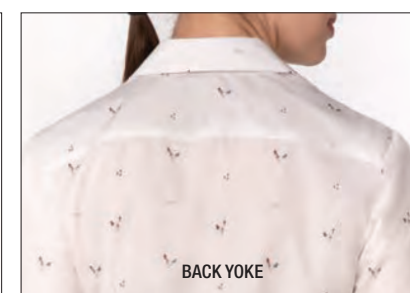
Chef Works  
**URBAN**  
COLLECTION



CONTRAST FABRIC ON INNER BAND & BUTTON DETAIL



CONTRAST FABRIC ON INNER SLEEVE BAND



BACK YOKE

#### OMAHA URBAN WOMEN'S SHORT-SLEEVE SHIRT

115 gm<sup>2</sup> White & 119 gm<sup>2</sup> Grey, 65/35 poly/cotton, short sleeves, matching button front, contrast collar band, inner-sleeve contrast hem, Men's style available SHC10 (see page 64).

Available in: Grey, White.

SHC10W | SIZES: XS-3XL CF 1

Chef Works  
**URBAN**  
COLLECTION



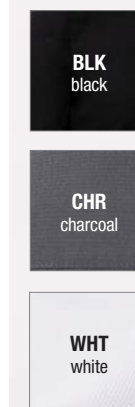
**SEERSUCKER CONTEMPORARY SHORT-SLEEVE SHIRT**

136 gm<sup>2</sup> / 4oz 65/35 poly/cotton short sleeve banded collar snap front shirt, left sleeve inset pocket, back yoke with darts, side-seam slits, back collar snap-tab apron holder.

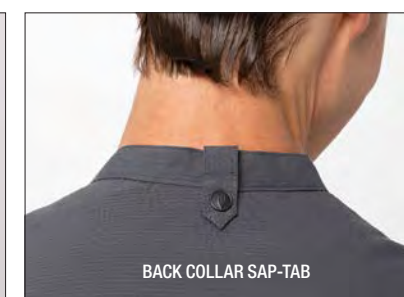
Available in: Black, Charcoal, White.

SHC08 | SIZES: S-4XL **CF 1**

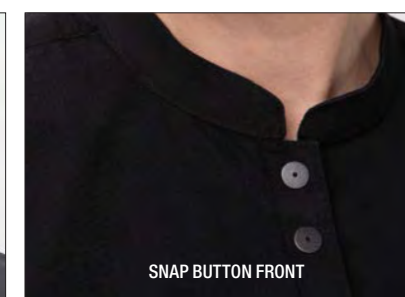
 Chef Works  
**contemporary**  
collection



LEFT SLEEVE INSET POCKET



BACK COLLAR SAP-TAB



SNAP BUTTON FRONT

**SEERSUCKER CONTEMPORARY WOMEN'S SHORT-SLEEVE SHIRT**

Product text: 136 gm<sup>2</sup> / 4oz 65/35 poly/cotton short sleeve banded collar snap front shirt, left sleeve inset pocket, front darts, back yoke with darts, side-seam slits, back collar snap-tab apron holder.

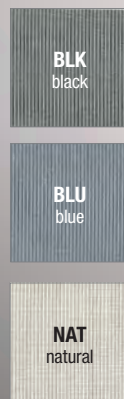
Available in: Black, Charcoal, White.

SHC08W | SIZES: XS-3XL **CF 1**

 Chef Works  
**contemporary**  
collection







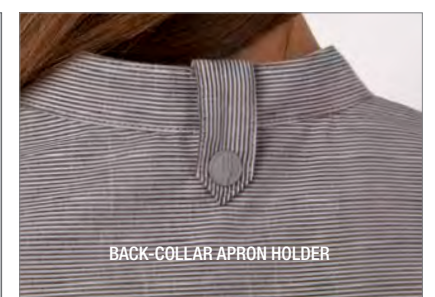
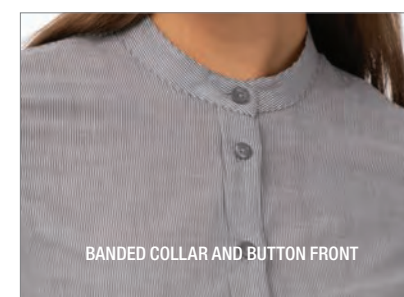
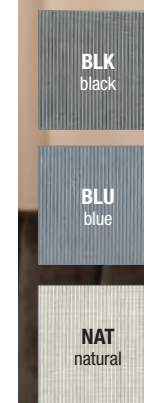
### VERISMO CONTEMPORARY MEN'S LONG-SLEEVE SHIRT

89 gm<sup>2</sup> / 2.6 oz, 62/38 poly/cotton, fine-stripe fabric, long sleeves with adjustable cuffs, converting to short sleeves with button tabs, banded collar, button front, back-collar apron holder, back yoke with pleats. Women's style available SFB02W (see page 69).

Available in: Black, Blue, Natural.

SFB02 | SIZES: S-4XL **CF 1**

 Chef Works  
**contemporary**  
collection



### VERISMO CONTEMPORARY WOMEN'S LONG-SLEEVE SHIRT

89 gm<sup>2</sup> / 2.6 oz, 62/38 poly/cotton, fine-stripe fabric, long sleeves with adjustable cuffs, converting to short sleeves with button tabs, banded collar, button front, back-collar apron holder, front darts. Unisex style available SFB02 (see page 68).

Available in: Black, Blue, Natural.

SFB02W | SIZES: XS-3XL **CF 1**

 Chef Works  
**contemporary**  
collection





BLU  
blue

GRY  
grey

TAU  
taupe

#### VOCE CONTEMPORARY MEN'S LONG-SLEEVE SHIRT

106 gm<sup>2</sup> / 3.1 oz, 60/40 poly/cotton, wide stripe fabric, long sleeves with adjustable cuffs, converts to short sleeves with button tabs, banded collar, button front, back yoke with pleats, back-collar apron holder. Women's style available SFB03W (see page 71).

Available in: Blue, Grey, Taupe.

SFB03 | SIZES: S-4XL **CF 1**

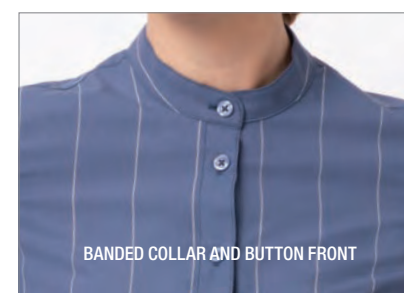
Chef Works  
**contemporary**  
collection



BLU  
blue

GRY  
grey

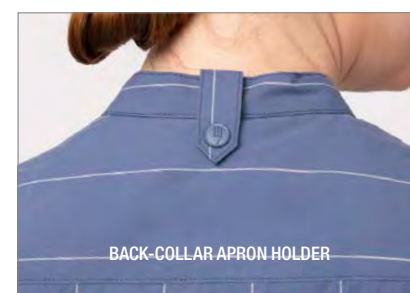
TAU  
taupe



BANDED COLLAR AND BUTTON FRONT



SHORT SLEEVE BUTTON TAB



BACK-COLLAR APRON HOLDER

#### VOCE CONTEMPORARY WOMEN'S LONG-SLEEVE SHIRT

106 gm<sup>2</sup> / 3.1 oz, 60/40 poly/cotton, wide stripe fabric, long sleeves with adjustable cuffs, converts to short sleeves with button tabs, banded collar, button front, back yoke with pleats, back-collar apron holder. Unisex style available SFB03 (see page 70).

Available in: Blue, Grey, Taupe.

SFB03W | SIZES: XS-3XL **CF 1**

Chef Works  
**contemporary**  
collection



- BLK  
black
- BLU  
blue
- CHR  
charcoal
- MSH  
mushroom

#### DEFINITY URBAN WOMEN'S KNIT SHIRT

170 gm² / 5 oz, 57/38/5 cotton/poly/elastane, V-neck, polo style, ¾ sleeve and fitted style. Unisex style available TSME (see page 73).

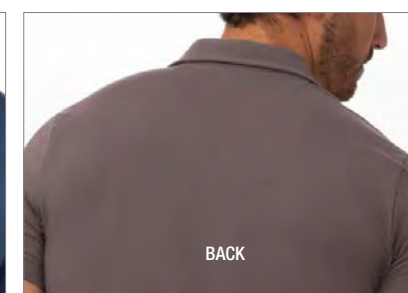
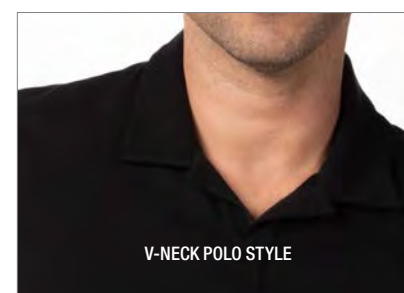
Available in: Black, Blue, Charcoal, Mushroom.

TSWO | SIZES: XS-3XL **FF 1**

**STRETCH**

ChefWorks  
**URBAN**  
COLLECTION

- BLK  
black
- BLU  
blue
- CHR  
charcoal
- MSH  
mushroom



#### DEFINITY URBAN UNISEX KNIT SHIRT

170 gm² / 5 oz, 57/38/5 cotton/poly/elastane, V-neck, polo style, short sleeves and fitted style. Women's style available TSWO (see page 72).

Available in: Black, Blue, Charcoal, Mushroom.

TSME | SIZES: S-4XL **FF 1**

**STRETCH**

ChefWorks  
**URBAN**  
COLLECTION





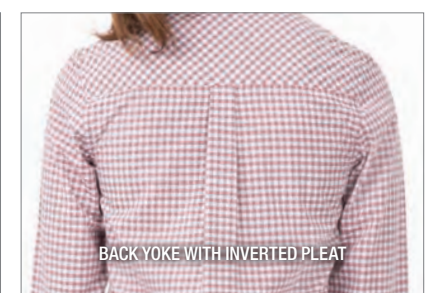
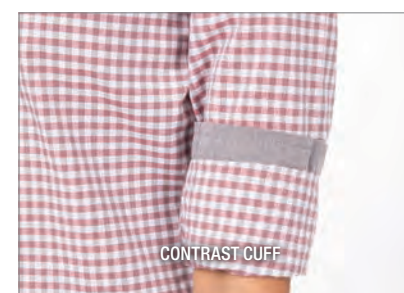
#### MODERN GINGHAM SHIRT

110 gm<sup>2</sup> / 3.2 oz, 65/35 yarn-dyed poly/cotton, back yoke with inverted pleat, contrast fabric on inner sleeve band, top right placket and inner collar band, long-sleeve with two-button cuffs, left chest patch pocket. Women's fit available SHC05W (see page 73).

Available in: Chocolate, Strong Blue, Chili Pepper.

SHC05 | SIZES: S-3XL **CF 1**

Chef Works  
**URBAN**  
COLLECTION



#### MODERN GINGHAM WOMEN'S SHIRT

110 gm<sup>2</sup> / 3.2 oz, 65/35 yarn-dyed poly/cotton, back yoke with inverted pleat, contrast fabric on inner sleeve band, top right placket and inner collar band, long-sleeve with two-button cuffs. Unisex fit available SHC05 (see page 74).

Available in: Chocolate, Strong Blue, Chili Pepper.

SHC05W | SIZES: XS-2XL **CF 1**

Chef Works  
**URBAN**  
COLLECTION







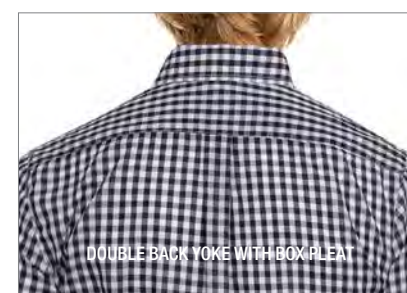
#### GINGHAM SHIRT

110 gm<sup>2</sup> / 3.2 oz, 65/35 yarn-dyed poly/cotton poplin, button-down collar, long-sleeve with two-button cuffs, double back yoke with box pleat, six-button placket, left chest pocket. Women's fit available W500 (see page 77).

Available in: Black, Dark Navy, Red.

D500 | SIZES: S-3XL **CF 1**

Chef Works  
**URBAN**  
COLLECTION



DOUBLE BACK YOKE WITH BOX PLEAT



COLLAR & BUTTON



LONG-SLEEVE WITH TWO-BUTTON CUFFS

#### GINGHAM WOMEN'S SHIRT

110 gm<sup>2</sup> / 3.2 oz, 65/35 yarn-dyed poly/cotton poplin, button-down collar, long-sleeve with two-button cuffs, double back yoke with box pleat and six-button placket, left chest pocket. Unisex fit available D500 (see page 76).

Available in: Black, Dark Navy, Red.

W500 | SIZES: XS-2XL **CF 1**

Chef Works  
**URBAN**  
COLLECTION





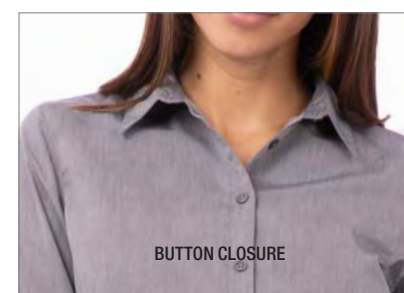
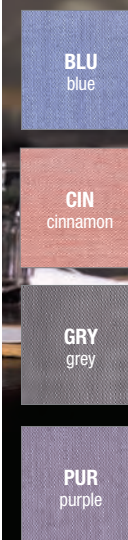
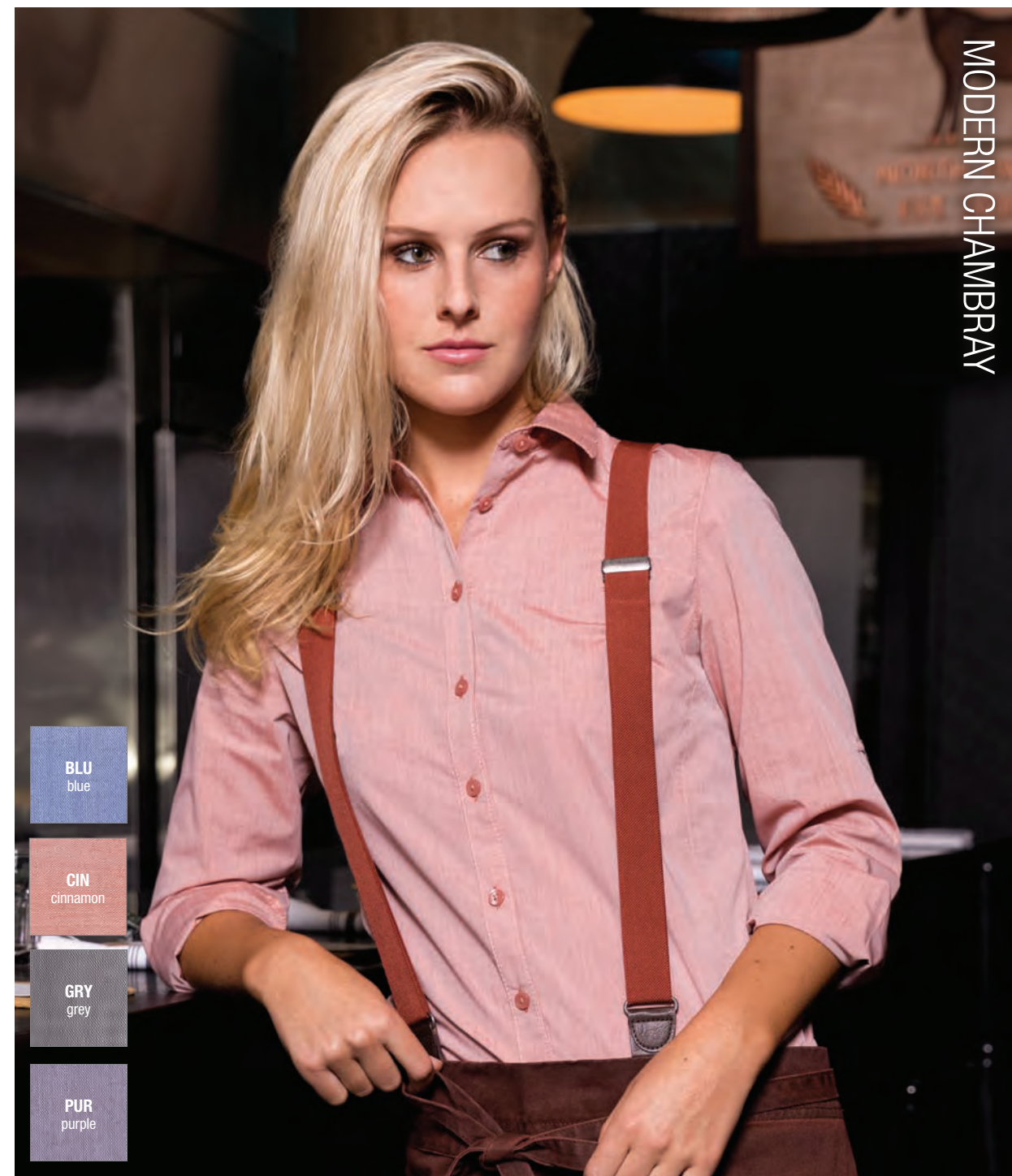
#### MODERN CHAMBRAY SHIRT

115 gm<sup>2</sup> / 3.4 oz, 65/35 poly/cotton, back yoke with pleats, side hem detail, roll-up long sleeves with button tab, two-button cuff, buttoned front. Women's fit available SHC06W (see page 79).

Available in: Blue, Cinnamon, Grey, Purple.

SHC06 | SIZES: S-3XL **MF 1**

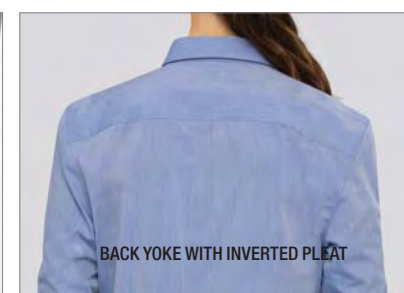
Chef Works  
**URBAN**  
COLLECTION



BUTTON CLOSURE



ROLLED SLEEVE AND TAB



BACK YOKE WITH INVERTED PLEAT

#### MODERN CHAMBRAY WOMEN'S SHIRT

115 gm<sup>2</sup> / 3.4 oz, 65/35 poly/cotton, back yoke, side hem detail, roll-up long sleeves with button tab, button front. Unisex fit available SHC06 (see page 78).

Available in: Blue, Cinnamon, Grey, Purple.

SHC06W | SIZES: XS-2XL **MF 1**

Chef Works  
**URBAN**  
COLLECTION





**DUR**  
dusty  
rose

**ECR**  
ecru

**GRM**  
green  
mist

**GRY**  
grey

#### CHAMBRAY SHIRT

135 gm<sup>2</sup> / 4 oz, 60/40 cotton/poly, anti-wrinkle finish, back yoke with boxed pleat, roll-up long sleeve with button tab, faux horn buttons and left sleeve pocket. Women's fit available SLWCH002 (see page 81).

Available in: Dusty Rose, Ecru, Green Mist, Grey.

SLMCH005 | SIZES: XS-3XL **CF 1**

Chef Works  
**URBAN**  
COLLECTION

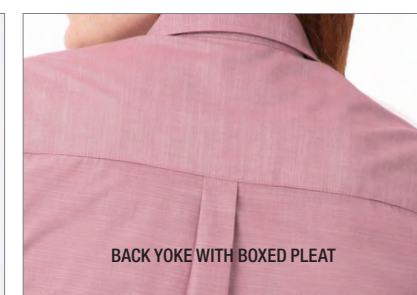


**DUR**  
dusty  
rose

**ECR**  
ecru

**GRM**  
green  
mist

**GRY**  
grey



#### CHAMBRAY WOMEN'S SHIRT

135 gm<sup>2</sup> / 4 oz, 60/40 cotton/poly, anti-wrinkle finish, back yoke with boxed pleat, roll-up long sleeve with button tab, faux horn buttons and left sleeve pocket. Unisex fit available SLMCH005 (see page 80).

Available in: Dusty Rose, Ecru, Green Mist, Grey.

SLWCH002 | SIZES: XS-2XL **CF 1**

Chef Works  
**URBAN**  
COLLECTION





PILOT



BLK  
black

GRY  
grey

#### PILOT SHIRT

130 gm<sup>2</sup> / 3.8 oz, 64/34/2 poly/cotton/elastane, roll-up long sleeve with button tab, double back yoke, buttoned front and two-button cuffs and two front pockets with flaps. Women's fit available WPDS (see page 83).

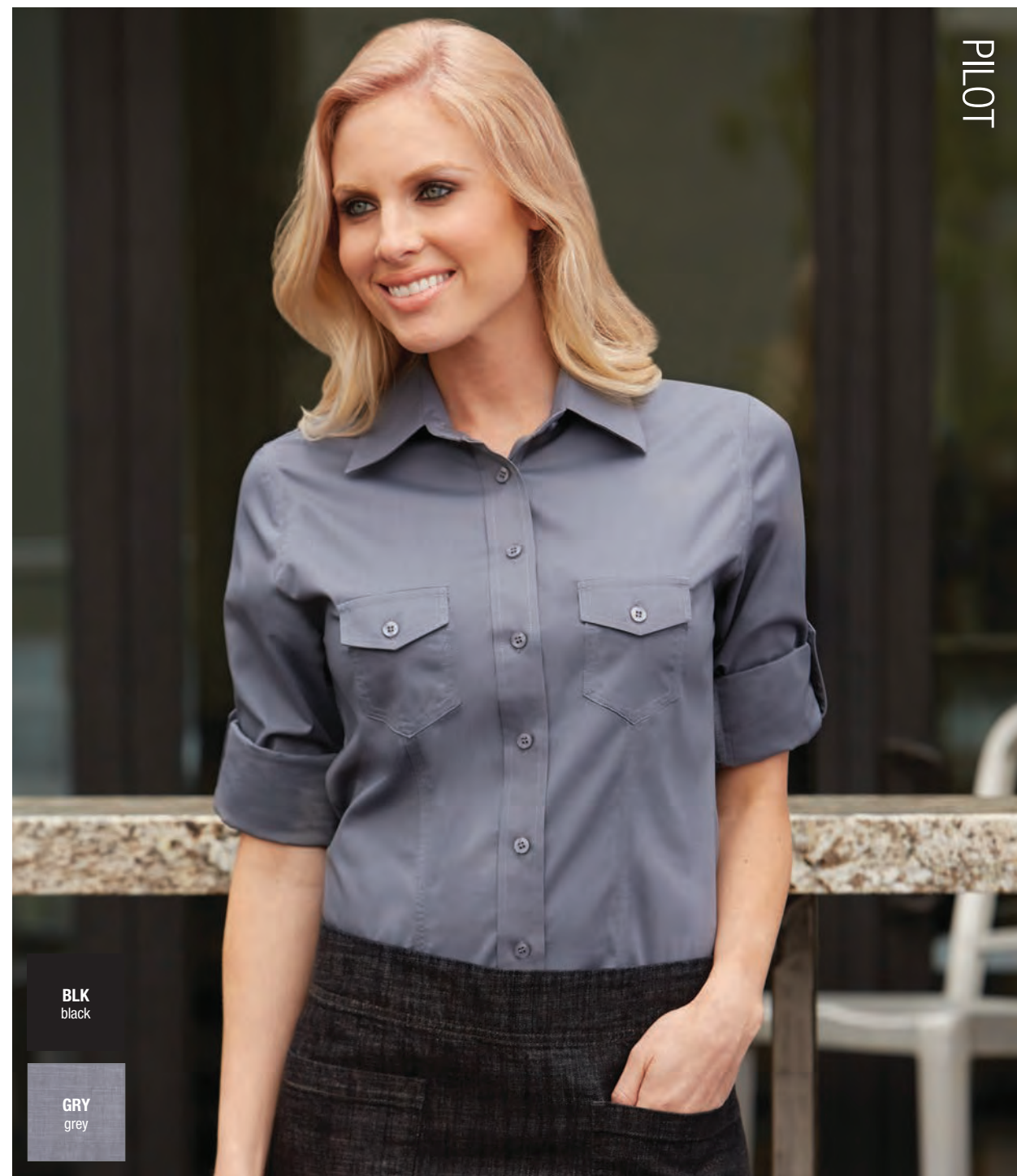
Available in: Grey, Black.

DPDS | SIZES: S-2XL **CF 1**



Shirt & Top Collection

PILOT



BLK  
black

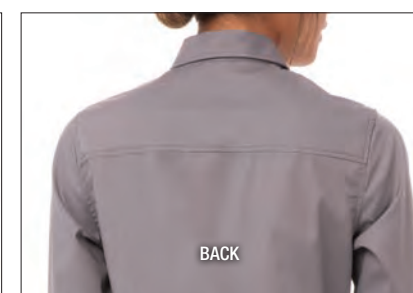
GRY  
grey



BUTTONED CHEST POCKETS



ROLLED SLEEVE WITH BUTTON TAB



BACK

#### WOMEN'S PILOT SHIRT

130 gm<sup>2</sup> / 3.8 oz, 64/34/2 poly/cotton/elastane, roll-up long sleeve with button tab, double back yoke, buttoned front and two-button cuffs and two front pockets with flaps. Unisex fit available DPDS (see page 82).

Available in: Grey, Black.

WPDS | SIZES: XS-2XL **SF 1**





OXFORD

WHT  
white

#### OXFORD SHIRT & WOMEN'S OXFORD SHIRT

110 gm<sup>2</sup> / 3.8 oz, 50/50 poly/cotton poplin, button-down collar, long-sleeve with two-button cuffs, double back yoke with box pleat, six-button placket and left chest pocket. Unisex D500. Women's fit W500.

Available in: White.

D500 | SIZES: XS-5XL **CF 1**

W500 | SIZES: XXS-3XL **CF 1**



COOL VENT™ COOK / UNIVERSAL

BLU  
blue

BLK  
black

GRY  
grey

WHT  
white

#### COOL VENT™ COOK / UNIVERSAL SHIRT

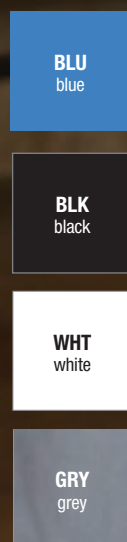
155 gm<sup>2</sup> / 4.6 oz, 65/35 poly/cotton, Cool Vent™ panels under arms and down sides, matching buttons and left chest patch pocket. Women's fit available CSWV (see page 86).

Available in: Blue, Black, Grey, White.

**CSCV** (BLK) SIZES: XS-5XL | **CSMV** (GRY, BLU) **CSCV** (WHT) SIZES: XS-5XL **CF 1**







### UNIVERSAL WOMEN'S SHIRT

155 gm<sup>2</sup> / 4.6 oz, 65/35 poly/cotton, fitted style, Cool Vent™ panels down both sides, triple topstitching and matching buttons. Unisex fit available CSCV + CSMC + CSMV-BLU (see page 85).

Available in: Blue, Black, Grey, White.

CSWV | SIZES: XS-2XL **SF 1**



### UNIVERSAL CONTRAST WOMEN'S SHIRT

155 gm<sup>2</sup> / 4.6 oz, 65/35 poly/cotton, fitted style, Cool Vent™ panels down both sides, triple contrast topstitching and matching buttons.

Available in: Black/Grey.

CSWC | SIZES: XS-2XL **SF 1**







WHT  
white

#### GRANDAD LONG SLEEVE SHIRT

115 gm², 65/35 poly/cotton, double button cuff and sleeve guard. Typical banded grandad collar with top button fastening. Easycare fabric. Wash at 40°C.

Available in: White.

PR258 | SIZES: XS-3XL

PREMIER®



A  
denim

#### BANFF WOMEN'S SHIRT

140g 100% cotton, tailored fit, long sleeves, faux horn buttons, contrast button detailing, easy iron.

Available in: Denim.

2323A | SIZES: 6R - 24R

BROOK  
TAVERNER  
SINCE 1912

#### JASPER SHIRT

140g 100% cotton, tailored fit, long sleeves, chest pocket with button, faux horn buttons, contrast button detailing, easy iron.

Available in: Denim.

7886A | SIZES: 14"-20"

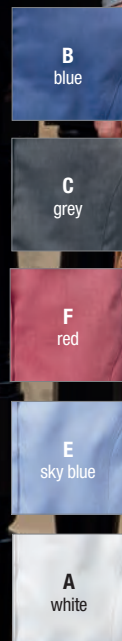
BROOK  
TAVERNER  
SINCE 1912





TORONTO

ASPEN



#### TORONTO SHIRT

125g 60/40 cotton/poly, tailored fit Royal Oxford shirt with button down collar, French placket, long sleeves and contrast detailing.

**Available in:** Blue (B), Grey (C), Red (E ), Sky (D), White (A).

**7882** | SIZES: 14"-20"



#### ASPEN WOMEN'S SHIRT

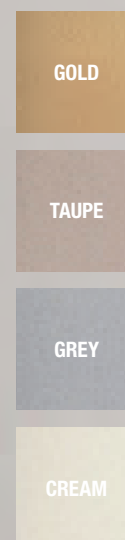
125g 60/40 cotton/poly, tailored fit Royal Oxford shirt with French placket, long sleeves and contrast detailing.

**Available in:** Blue (B), Grey (C), Red (E ), Sky (D), White (A).

**2319** | SIZES: 6R - 24R



RAVENNA SATIN BLOUSE



#### RAVENNA SATIN BLOUSE

97% Polyester, 3% Elastane - high stretch, easy iron. Semi-fitted, half sleeve, round neck.

**Available in:** Cream, Grey, Taupe, Gold.

**2362** | SIZES: 6R - 26R







**ALBA SLIM FIT SHIRT**  
120 gm<sup>2</sup> 55/45 cotton/poly, slim fit, long sleeve with single cuff, twin rear darts, semi cutaway collar and easy iron. Classic fit RAPINO 7539 also available.  
**Available in:** Black (D), Blue (E), Grey (G), Lilac (F), Navy (H), White (A).  
**7640 | SIZES:** 14"-18"



**PALENA BLOUSE**  
120 gm<sup>2</sup> 55/45 cotton/poly, semi-fitted, long sleeve with single two button cuff and easy iron.  
**Available in:** Black (D), Blue (E), Lilac (F), White (A). (For Grey (G), Navy (H) ask for PARMA 2295).  
**2214 | SIZES:** 4 - 30



**SELENE SEMI-FITTED BLOUSE**  
115 gm<sup>2</sup> 65/35 poly/cotton, semi-fitted easy to iron women's shirt with two button cuff and classic button up collar, machine washable at 40°.  
**Available in:** Blue (B), White (A).



**2270 | SIZES:** 4 - 30



**VULCAN SLIM-FIT SHIRT**  
185 gm<sup>2</sup> 100% polyester. Deep waist band trouser. Front fastening zip. Cross over waistband with 2-button fastening. Straight leg.  
**Available in:** White.



**7889 | SIZES:** 14"-18"

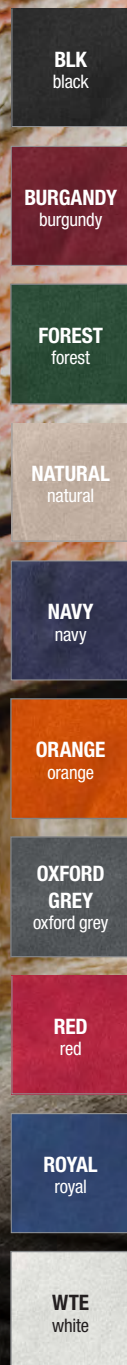


**UNISEX INSULATED BODYWARMER**  
386 gsm Outer: 210T Polyester with A/C coating. 55gsm. Inner: 100% Polyester, with polyfill wadding bodywarmer has a great warmth to weight ratio and is perfect as a boost to your layering system.  
**Available in:** Black, Bottle, Navy, Red.

**R208X | SIZES:** XS 34" S 38" M 41" L 44" XL 47" 2XL 50" 3XL 53"





**POLAR THERM™ FLEECE JACKET**

330 gm² 100% Polyester heavy pill-resistant Active Fleece. Stretchy fit, classic fit timeless fleece. Wash at 40°.

**Available in** Black\*, Burgundy, Forest, Natural, Navy\*, Orange, Oxford Grey, Red, Royal, White.

**RE36A** | **SIZES:** XS/UK38 - 2XL/UK52 (\*3XL/UK54 available in these colours)

**Result**



SOFTSHELL JACKET

**SOFTSHELL JACKET**

280 gm² 100% Polyester outer-layer, 100% polyester micro-fleece inner-layer technically advanced two-layer showerproof, breathable and windproof jacket. Full zip front, two zip front pockets, chin guard, elasticised cuffs, slim fit.

**Available in:** Black/Black, Black/Orange, Charcoal/Black, Navy/Royal, Navy/Navy, Purple/Black, Red/Black, Vivid Green/Black, White/Black, Yellow/Black.

**R231M** | **SIZES:** S/UK38 - 4XL/UK52



SOFTSHELL WOMEN'S JACKET

**SOFTSHELL WOMEN'S JACKET**

**R231F** | **SIZES:** XS/UK8-2XL/UK18

**Result**



FLEECE GILET

**ARTISAN FLEECE GILET**

260 gm² 100% Polyester. Sleeveless gilet with contrast trim detail. High-neck round collar, leading into a two-way zipper. Two zipped external pockets and two internal open pockets. Front and back panel detail. Contrast fabric hook on back of collar for hanging up.

**Available in:** Black/Black, Burgandy/Brown, Moss green/Brown, Navy/Brown

**PR803** | **SIZES:** XS-3XL



WOMEN'S FLEECE GILET

**WOMEN'S ARTISAN FLEECE GILET**

**PR804** | **SIZES:** XS-3XL





PRO POLO SHIRT



PRO UNISEX POLO SHIRT

220 gm<sup>2</sup> / 6.5 oz, 50/50 poly/cotton, high quality and enhanced durability as well as a comfortable fit

Available in: Colour swatches above, more options available online.

RX101

|

SIZES: XS-8XL (\*8XL in these colours only)



PRO POLO WOMEN'S SHIRT



PRO POLO WOMEN'S SHIRT

220 gm<sup>2</sup> / 6.5 oz, 50/50 poly/cotton, high quality and enhanced durability as well as a comfortable fit

Available in: Colour swatches above, more options available online.

RX01F

|

SIZES: XS-4XL



BLEND POLO



BLEND POLO

200 gm<sup>2</sup> / 5.9 oz, 65/35 poly/cotton, classic fit, ribbed knit collar and cuffs, twin needle hem stitching, self coloured buttons, technical wicking fabric to help regulate temperature.

Available in: Colour swatches above, more options available online.

AQ015 | SIZES: XXS-5XL  
(\*4XL-5XL only available in these colours)



BLEND WOMEN'S POLO



BLEND WOMEN'S POLO

200 gm<sup>2</sup> / 5.9 oz, 65/35 poly/cotton, classic fit, ribbed knit collar and cuffs, twin needle hem stitching, two self coloured buttons, technical wicking fabric to help regulate temperature.

Available in: Colour swatches above, more options available online.

AQ025 | SIZES: XS-2XL



ORGANIC POLO



ORGANIC COTTON POLO

230 gm<sup>2</sup> / 6.78 oz, 100% organic cotton, front placket construction with two buttons, side slits at hem, flat knit rib collar and sleeve cuff.

Available in: Colour swatches above, more options available online.

SX126 | SIZES: XXS-5XL  
(\*4XL and 5XL only available in these colours)



ORGANIC WOMEN'S POLO



STANLEY/STELLA

COTTON WOMEN'S POLO

200 gm<sup>2</sup> / 6.7 oz, 95% organic ringspun combed cotton, 5% elastane.

Available in: Colour swatches above, more options available online.

SX131 | SIZES: XS-2XL  
(\*\*NA in women's polo)



COTTON T-SHIRT



COTTON T-SHIRT

100% cotton. (Ash: 99/1 cotton/poly. Heather Grey: 97/3 Cotton/poly).

Available in: Colour swatches above, more options available online.

SS044 | SIZES: S-5XL (\*4 & 5XL only available in these colours)

190gm<sup>2</sup> / 5.6oz



COTTON WOMEN'S T-SHIRT

COTTON WOMEN'S T-SHIRT

190 gm<sup>2</sup> / 5.6 oz, 100% cotton (\*99/1 cotton/Poly \*\*97/3 cotton/poly), technical wicking fabric

Available in: Colour swatches above, more options available online.

SS424 | SIZES: XS-2XL







COTTON PRE-SHRUNK T-SHIRT



#### UNISEX PRE-SHRUNK COTTON T-SHIRT

145 gm<sup>2</sup> / 4.3 oz, 100% pre-shrunk ringspun cotton

**Available in:** Colour swatches above, more options available online.

**BA210** | **SIZES:** XS-5XL (\*4XL & 5XL only available in these colours)



COTTON PRE-SHRUNK WOMEN'S T-SHIRT

#### COTTON PRE-SHRUNK WOMEN'S T-SHIRT

145 gm<sup>2</sup> / 4.3 oz, 100% pre-shrunk ringspun cotton

**Available in:** Colour swatches above, more options available online.

**B210F** | **SIZES:** XS-3XL (\*\*3XL only available in these colours)



ORGANIC COTTON T-SHIRT



#### ORGANIC COTTON ESSENTIAL T-SHIRT

150 gm<sup>2</sup> / 4.4oz, 100% organic ring spun cotton, tubular construction, contemporary fit.

**Available in:** Colour swatches above, more options available online.

**SX087** | **SIZES:** XS-3XL (\* up to 4XL, \*\* up to 5XL)



ORGANIC WOMEN'S T-SHIRT

#### ORGANIC COTTON WOMEN'S ESSENTIAL T-SHIRT

150 gm<sup>2</sup> / 4.4oz, 100% organic ring spun cotton, tubular construction, straight fit.

**Available in:** Colour swatches above, more options available online.

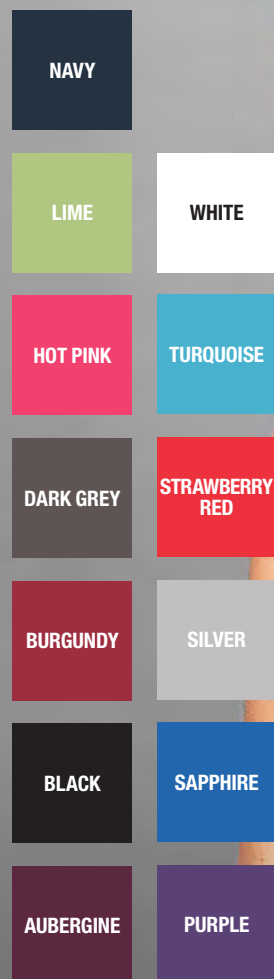
**SX088** | **SIZES:** XS-2XL ( up to 3XL in Black, White)



Housekeeping  
& Spa

Comfort and style seamlessly fuse together in our contemporary Housekeeping & Spa capsule collection. With simple fluid silhouettes, you can move with ease from task-to-task whilst maintaining that ultimate professional first impression





#### ORCHID BEAUTY AND SPA TUNIC

100% Polyester plain weave, 185 gsm. Beauty and spa tunic with mandarin collar. Asymmetric button fastening to the front with eight bar shaped buttons. Short sleeve. Side vents. Back pleat for ease of movement. Princess seams. Easycare. Domestic wash at 40c.

Available in: Colours swatches as listed above.

PR682 | SIZE: XXS-5XL



#### RENATA TUNIC

100% polyester women's tunic, short sleeves, standing collar, three top showing and hidden central button fastening, two side pockets, armhole comfort pleats in anti-perspirant COOLMAX™ fabric.

Available in: Black.

2781-7847 | SIZES: LENGTH: 31cm

BRAGARD



#### BELINE TUNIC

65/35 polyester/cotton women's tunic, white trim on collar and short sleeves, snap central placket, slit on cuffs, Princess seams at back and front, side slits and two pockets.

Available in: Grey.

132672 | SIZES: XS-XL LENGTH: 74cm

BRAGARD



#### TRIDOL TUNIC

100% polyester unisex tunic, short sleeves, standing collar, three top showing and hidden central button fastening, two side pockets, armhole comfort pleats in anti-perspirant COOLMAX™ fabric.

Available in: Black.

9077-7847 | SIZES: XS-2XL LENGTH: 75cm

BRAGARD







#### BLOSSOM TUNIC

100% Polyester, 185 gsm. Button front fastening with concealed zip. Mandarin collar. Short sleeve. Princess seams. Side vents. Back pleat for ease of movement. Domestic wash at 40c.

**Available in:** colour swatches above, more options available online.

**PR683** | **SIZES:** XXS-5XL



#### MIKA TUNIC

100% Polyester, 185 gsm. Mandarin collar with side yoke detail along with four feature buttons and satin trim. Princess seams and bust darts. Side vents. Short sleeves. Domestic wash at 40c.

**Available in:** Black.

**PR681** | **SIZES:** XXS-5XL



#### NELDA APRON

65/35 polyester/cotton housekeeping apron, self-fabric tie, central panel with one pocket either side.

**Available in:** White.

**6645-1625** | **SIZES:** LENGTH: 31cm

**BRAGARD**



#### VIOLA TUNIC

100% Polyester, 160 gsm. Soft linen fabric with front and back princess seams and side vents. Two contrast coloured yarns with a concealed zip back and open side pockets. Rounded v-neck design.

**Available in:** Heather Black, Heather Blue, Heather Grey.

**PR688** | **SIZES:** XS-5XL



#### IRIS STRAIGHT LEG TROUSERS

100% Polyester, 185 gsm. Deep waist band trouser. Front fastening zip. Cross over waistband with 2-button fastening. Straight leg.

**Available in:** Black, Heather Black, Heather Blue, Heather Grey.

**PR536** | **SIZES:** XS-5XL **LENGTH:** Regular 31", Long 34"



#### PETAL TROUSER

98% Cotton 2% Elastane, women's trouser with 5 pockets and front zip.

**Available in:** Black, Beige, Steel Grey and Blue Denim.

**131266** | **SIZES:** 8-24 Length 106cm

**BRAGARD**



#### AMBRA DRESS

65/35 poly/cotton dress, stand-up contrast collar, short Raglan sleeve with contrast turn-up, central hidden packet fastening, centre pleat, angled inset side pockets.

**Available in:** Grey/White stripe.

**0915-2325** | **SIZE:** 6/8UK - 22/24UK **LENGTH:** 110cm

**BRAGARD**





# Apron Collection

Built to be tough enough for the back-of-house and stylish enough for hospitality, our aprons are the perfect blend of form and function. You'll find artisan finishes, innovative closures, cross-back straps and a myriad of storage options





**BLK**  
black

**BLU**  
blue

**CHR**  
charcoal

**MSH**  
mushroom

**WHT**  
white



#### BRIO CHEF'S BIB APRON

160 gm<sup>2</sup> / 4.7oz, 65/35 poly/cotton, adjustable elastic neck strap, curved hem, concealed pen pockets on chest, hip pocket, utility D-ring, front slit and reinforced stress points.

**Available in:** Black, Blue, Charcoal, Mushroom, White.

**ACN01** | **SIZE:** 102cm W x 109cm L



**contemporary**  
collection



*Apron Collection*





Strap Colours  
SKU  
See page 138

**BLK**  
black

**BLU**  
blue

**CHR**  
charcoal

**DNA**  
dark navy

**MSH**  
mushroom

**BLK**  
black

**CHR**  
charcoal

**BLU**  
blue

**CML**  
camel

**MUS**  
mustard

**ORA**  
orange

**RED**  
red

**SEA**  
sea foam

**TPK**  
tropical pink

**TUR**  
turquoise

**WHT**  
white

#### LARGO BIB APRON

210 gm<sup>2</sup> / 6.2 oz, 65/35 poly/cotton, adjustable/Removeable Neck Strap XNS05 (sold separately, see page 138) can convert to cross-back, curved hem, concealed pen pockets on chest, slit seam and belt loops for ties, two roomy hip pockets, one with pencil divide, back pocket, utility D-ring, front slit. Your choice of strap colour.

Available in: Black, Blue, Charcoal, Mushroom, Dark Navy.

ABN01 | SIZES: 78cm L x 96cm W

Chef Works

contemporary  
collection



#### LARGO SHORT BIB APRON

210 gm<sup>2</sup> / 6.2oz, 65/35 poly/cotton, adjustable/removeable neck strap XNS05 (sold separately, see page 138) to convert to cross-back, curved hem, concealed pen pockets on chest, slit seam and belt loops for ties, two hip pockets.

Available in: Black, Blue, Charcoal, Dark Navy, Mushroom.

ABN01W | SIZE: 64cm L x 96cm W

#### LARGO HALF BISTRO APRON

210 gm<sup>2</sup> / 6.2oz, 65/35 poly/cotton, waistband tie opening and belt loop, two front hip patch and back utility pockets, metal D-ring, front slit.

AHN05 | SIZE: 49cm L x 81cm W

Chef Works

contemporary  
collection



**MEDFORD URBAN BIB APRON**

210 gm<sup>2</sup> / 6.2 oz, 65/35 poly/cotton, crosshatch fabric, adjustable neck strap, concealed pen pockets on chest, spacious hip pockets, right hip pocket with pencil divide, back pocket, slit-seam opening, belt loop for ties

Available in: Coral, French Blue, Jade, Natural.

**ABN02** | SIZE: 78cm L x 97cm W

ChefWorks  
**URBAN**  
COLLECTION

## MEDFORD SHORT BIB

**MEDFORD URBAN SHORT BIB APRON**

210 gm<sup>2</sup> / 6.2 oz, 65/35 poly/cotton, crosshatch fabric, front slit, adjustable neck strap, concealed pen pockets on chest, left and right hip pockets, back pocket, slit-seam opening, belt loop for ties, double-needle stitching

Available in: Coral, French Blue, Jade, Natural.

**ABN02W** | SIZE: 64cm L x 98cm W

ChefWorks  
**URBAN**  
COLLECTION

## MEDFORD HALF BISTRO

**MEDFORD URBAN HALF BISTRO APRON**

210 gm<sup>2</sup> / 6.2 oz, 65/35 poly/cotton, crosshatch fabric, crosshatch fabric, spacious left hip pocket, spacious right hip pocket with pencil divide, back pocket, slit-seam opening, belt loop for ties, double-needle stitching, reinforced stress points

Available in: Coral, French Blue, Jade, Natural.

**AHN06** | SIZE: 41cm L x 96cm W

ChefWorks  
**URBAN**  
COLLECTION





Strap Colours  
SKU  
See page 138

- BLK black
- CHR charcoal
- BLU blue
- CML camel
- MUS mustard
- ORA orange
- RED red
- SEA sea foam
- TPK tropical pink
- TUR turquoise
- WHT white

#### OLYMPIA URBAN REVERSIBLE SELF-PLAID/PLAID BIB APRON

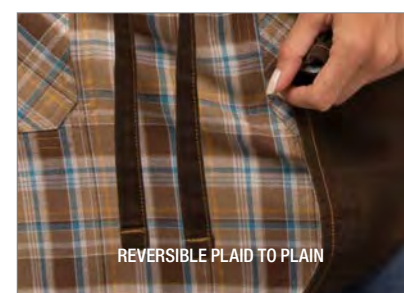
227 gm<sup>2</sup> / 6.7oz 100% cotton adjustable/Removeable Neck Strap XNS05 (sold separately, see page 138) can convert to cross-back, w/snaps (one engraved w/logo) included, double-needle stitching, plain self-fabric ties, reinforced stress points, two spacious hip pockets on front and reverse.

Available in: Brown (camel strap), Grey (black strap), Navy (blue strap).

ABR01 | SIZE: 93cm W x 82cm L.



#### OLYMPIA HALF BISTRO



#### OLYMPIA URBAN REVERSIBLE SELF-PLAID/PLAID HALF BISTRO APRON

227 gm<sup>2</sup> / 6.7oz 100% cotton apron with double-needle stitching, plain self-fabric ties, reinforced stress points, two spacious hip pockets on front and reverse.

Available in: Brown, Grey, Navy.

AHR01 | SIZE: 81cm W x 49cm L.







Strap Colours  
SKU  
See page 138

BLK  
black

CHR  
charcoal

BLU  
blue

CML  
camel

MUS  
mustard

ORA  
orange

RED  
red

SEA  
sea foam

TPK  
tropical pink

TUR  
turquoise

WHT  
white

BLK  
black

BLU  
blue

TAU  
taupe

#### SEATTLE URBAN BIB APRON

230 gm<sup>2</sup> / 6.8 oz, 65/35 poly/cotton, herringbone weave, reversible/adjustable/removable neck strap XNS05 (sold separately, see page 138), cross-back with conversion (neck strap sold separately), four utility pockets, double-needle stitching on pockets

Available in: Black, Blue, Taupe.

ABS02 | SIZE: 78cm L x 96cm W

Chef Works  
**URBAN**  
COLLECTION

#### SEATTLE HALF BISTRO



#### SEATTLE URBAN HALF BISTRO APRON

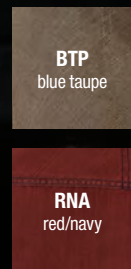
230 gm<sup>2</sup> / 6.8 oz, 65/35 poly/cotton, herringbone weave, four utility pockets, curved hem, double-needle topstitching pockets, reinforced stress points

Available in: Black, Blue, Taupe.

AHN07 | SIZE: 41cm L x 96cm W

Chef Works  
**URBAN**  
COLLECTION





### UPTOWN CROSS-BACK BIB

315 gm<sup>2</sup> / 9.3 oz, 75/25 cotton/poly textured crosshatch denim with artisan finish, adjustable cross-back ties with snap tab, three-part front pocket, pencil pocket, notebook pocket.

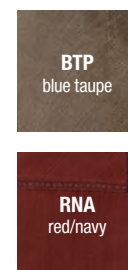
Available in: Red/Navy, Blue Taupe.

ABX01 | SIZE: 86cm L x 76cm W



Chef Karla Navarro, The Kitchen Project, Tijuana, Mexico

### UPTOWN HALF BISTRO



### UPTOWN HALF BISTRO

315 gm<sup>2</sup> / 9.3 oz, 75/25 cotton/poly textured crosshatch denim with artisan finish, three-part front pocket, cell phone pocket.

Available in: Red/Navy, Blue Taupe.

AHN01 | SIZE: 46cm L x 79cm W







**EAB**  
earth brown

**PEW**  
pewter

#### DORSET CHEF'S BIB APRON

266 gm<sup>2</sup> / 7.8 oz, 100% cotton antique washed finish, adjustable neck with grommet, chest pocket with riveted ends and cell phone pocket.

Available in: Earth Brown, Pewter.

**ABCAQ004** | SIZE: 102cm L x 99cm W

**Chef Michael McKee**, The Cork and Craft, San Diego, USA



Chef Works  
**URBAN**  
COLLECTION



*Apron Collection*

#### DORSET BIB



#### DORSET BIB APRON

266 gm<sup>2</sup> / 7.8 oz, 100% cotton antique washed finish, adjustable neck with grommet, chest pocket and cell phone/notebook pocket with riveted ends.

Available in: Earth Brown, Eggplant, Golden Brown, Pewter, Rust.

**ABAQ054** | SIZE: 86cm L x 76cm W



Chef Works  
**URBAN**  
COLLECTION

#### DORSET HALF BISTRO



#### DORSET HALF BISTRO APRON

266 gm<sup>2</sup> / 7.8 oz, 100% cotton antique washed finish, grommets for ties and cell phone/notebook hip pocket with riveted ends.

Available in: Earth Brown, Eggplant, Golden Brown, Pewter, Rust.

**AHWAQ014-GBN** | SIZE: 48cm L x 79cm W



Chef Works  
**URBAN**  
COLLECTION





**BNB**  
brown/black

**PUB**  
purple/  
black

#### BOULDER CHEF'S BIB APRON

365 gm<sup>2</sup> / 10.8 oz, 100% cotton denim with a waxed finish look, towel loop, reverse fabric ties, reinforced stress points, adjustable neck with overall clips and tweezer chest pocket.

Available in: Brown/Black, Purple/Black.

**ABCWT001** | SIZE: 102cm L x 99cm W



#### BOULDER BIB



#### BOULDER BIB APRON

365 gm<sup>2</sup> / 10.8 oz, 100% cotton denim with a waxed finish look, towel loop, reverse fabric ties, reinforced stress points, adjustable neck with overall clips and double front pockets.

Available in: Brown/Black, Purple/Black.

**ABWT051** | SIZE: 86cm L x 76cm W



#### BOULDER HALF BISTRO



#### BOULDER HALF BISTRO APRON

365 gm<sup>2</sup> / 10.8 oz, 100% cotton denim with a waxed finish look, tapered design, reverse fabric ties with grommets and double front pockets.

Available in: Brown/Black, Purple/Black.

**AHWWT001** | SIZE: 46cm L x 79cm W







NTM  
nutmeg

SGY  
steel grey

ROCKFORD CHEF'S BIB APRON

315 gm<sup>2</sup> / 9.3 oz, 100% cotton enzyme washed canvas, adjustable metal neck buckle, chest with tweezer section and two hip pockets with saddle stitching detail.

Available in: Nutmeg, Steel Grey.

ABCKV003 | SIZE: 102cm L x 99cm W



Chef Barret Beyer, Star Studded Events & Catering, New York, USA. GRAMERCY CHEF COAT | EXDZ001-BLK



Apron Collection

ROCKFORD BIB



ROCKFORD BIB APRON

315 gm<sup>2</sup> / 9.3 oz, 100% cotton enzyme washed canvas, adjustable metal neck buckle, chest with tweezer section and two hip pockets with saddle stitching detail.

Available in: Nutmeg, Steel Grey.

ABKV053 | SIZE: 86cm L x 76cm W



ROCKFORD HALF BISTRO



ROCKFORD HALF BISTRO APRON

315 gm<sup>2</sup> / 9.3 oz, 100% cotton enzyme washed canvas, towel loop and two hip pockets with saddle stitching detail.

Available in: Nutmeg, Steel grey.

AHWKV013 | SIZE: 48cm L x 79cm W







NAT  
natural

#### AUSTIN CHEF'S BIB APRON

340 gm<sup>2</sup> / 9.5 oz, 100% cotton denim, reverse fabric ties, adjustable neck with snaps/carabiner, tweezer chest pocket, and towel loop.

Available in: Natural.

ABCCD006 | SIZE: 102cm L x 99cm W



Chef Phillip Esteban, CH Projects, San Diego, USA

#### AUSTIN HALF BISTRO APRON



NAT  
natural

#### AUSTIN HALF BISTRO APRON

340 gm<sup>2</sup> / 9.5 oz, 100% cotton denim, reverse fabric ties, cell phone hip pocket, double front pockets.

Available in: Natural.

ALWCD026 | SIZE: 48cm L x 71cm W



#### AUSTIN WAIST APRON



NAT  
natural

#### AUSTIN WAIST APRON

340 gm<sup>2</sup> / 9.5 oz, 100% cotton denim, reverse fabric ties, triple front pockets.

Available in: Natural.

AWCD016 | SIZE: 30cm L x 58cm W







BSL  
black/  
steel grey

BBG  
black/  
burgundy

#### CORVALLIS BIB APRON

280 gm<sup>2</sup> / 8oz, 60/40 cotton/poly crosshatch fabric, adjustable neck with grommet and two hip pockets with saddle stitching.  
Available in: Black/Steel Grey, Black/Burgundy.

ABXX052 | SIZE: 86cm L x 76cm W



#### CORVALLIS BISTRO



BSL  
black/  
steel grey

#### CORVALLIS BISTRO APRON

280 gm<sup>2</sup> / 8oz, 60/40 cotton/poly crosshatch fabric, ties with grommets and two hip pockets with saddle stitching.  
Available in: Black/Steel Grey.

ALWXX022 | SIZE: 79cm L x 79cm W



#### CORVALLIS HALF BISTRO



BSL  
black/  
steel grey

BBG  
black/  
burgundy

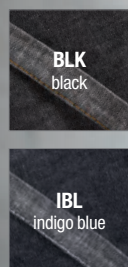
#### CORVALLIS HALF BISTRO APRON

280 gm<sup>2</sup> / 8oz, 60/40 cotton/poly crosshatch fabric, ties with grommets and two hip pockets with saddle stitching.  
Available in: Black/Steel Grey, Black/Burgundy.

AHWXX012 | SIZE: 48cm L x 79cm W







#### MANHATTAN BIB APRON

220 gm<sup>2</sup> / 6.5 oz, 100% cotton denim, reverse fabric ties and pockets, adjustable metal neck buckle, riveted and ends, zipper chest, double front pockets.

Available in: Black, Indigo Blue.

AB034 | SIZE: 86cm L x 76cm W



(T-shirts, models own)



#### MANHATTAN HALF BISTRO



#### MANHATTAN HALF BISTRO APRON

220 gm<sup>2</sup> / 6.5 oz, 100% cotton denim, reverse fabric ties and pockets, riveted and ends, zipper hip and double front pockets

Available in: Black, Indigo Blue.

AW046 | SIZE: 48cm L x 72cm W



#### MANHATTAN WAIST



#### MANHATTAN WAIST APRON

220 gm<sup>2</sup> / 6.5 oz, 100% cotton denim, self fabric ties, riveted and ends, zipper hip and divided front pockets

Available in: Black, Indigo Blue.

AW047 | SIZE: 30cm L x 58cm W







BLK  
black

IBL  
indigo blue

#### MEMPHIS CHEF'S BIB APRON

280 gm<sup>2</sup> / 8.3 oz, 100% cotton denim, contrast topstitching, contrast tape ties, adjustable by pulling ties, criss-cross bar tacks, utility chest pocket, double front and cell phone hip pocket.

Available in: Black, Indigo Blue.

AB036 | SIZE: 100cm L x 89cm W



#### MEMPHIS BISTRO



BLK  
black

IBL  
indigo blue

#### MEMPHIS BISTRO APRON

280 gm<sup>2</sup> / 8.3 oz, 100% cotton denim, contrast topstitching, contrast tape ties, criss-cross bar tacks and double front pockets

Available in: Black, Indigo Blue.

AW049 | SIZE: 61cm L x 81cm W



#### MEMPHIS HALF BISTRO



BLK  
black

IBL  
indigo blue

#### MEMPHIS HALF BISTRO APRON

280 gm<sup>2</sup> / 8.3 oz, 100% cotton denim, contrast topstitching, contrast tape ties, criss-cross bar tacks and double front pockets with cell phone divide

Available in: Black, Indigo Blue.

AW048 | SIZE: 48cm L x 72cm W



#### MEMPHIS WAIST



BLK  
black

IBL  
indigo blue

#### MEMPHIS WAIST APRON

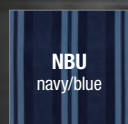
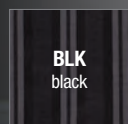
280 gm<sup>2</sup> / 8.3 oz, 100% cotton denim, contrast topstitching, contrast tape ties, criss-cross bar tacks and triple front pockets

Available in: Black, Indigo Blue.

AW054 | SIZE: 30cm L x 58cm W







### PRESIDIO BIB & HALF BISTRO APRON

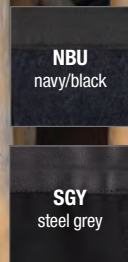
240 gm<sup>2</sup> / 7.1 oz, 66/34 cotton/poly, contrast ties, adjustable neck buckle on bib, riveted pocket ends, double front pockets.

Available in: Black, Indigo Blue.

AB024 | SIZE: 86cm L x 76cm W **AW026** | SIZE: 48cm L x 80cm W



INDY



ABX01-RNA  
THREE-PART FRONT POCKET



ABX01-RNA  
TABLE CROSS-BACK TIES WITH SNAP TAB



ABX01-RNA  
CROSS-BACK DETAIL

### INDY HIPSTER APRON

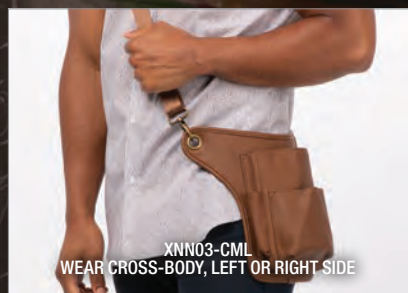
315 gm<sup>2</sup> / 9.3 oz, 100% cotton with artisan finish, adjustable belt, metal clasp, D-ring & buckle closure, iPad/notebook pocket, cell phone pocket, thermometer/pen pocket, riveted pocket ends.

Available in: Navy-Black, Steel-Grey.

**AWKV056** | SIZE: 29cm L x 39cm W







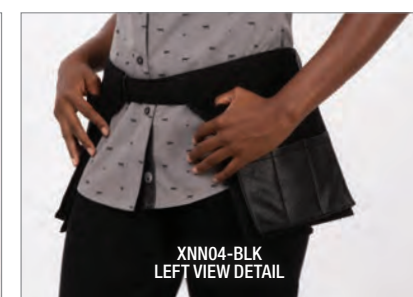
## SYRACUSE URBAN WAISTBELT

475 gm<sup>2</sup> / 14 oz, Body: 100% polyester, Coating: PU, two front pockets, one utility pocket, utility loop, clasp and grommet detail, wear cross-body or around waist, adjustable strap/buckle.

Available in: Black, Camel, Grey, Merlot, Mustard.

XNN03 | SIZE: Body: 27cm L x 20cm W, Belt: 119cm L

ChefWorks  
**URBAN**  
COLLECTION



## CHEYENNE URBAN WAISTBELT

325 gm<sup>2</sup> / 9.6 oz, 97/3 cotton/rayon, eight total pockets, two oversized front pockets, six utility pockets, adjustable waist belt with plastic buckle

Available in: Black.

XNN04 | SIZE: Bodies: 27cm L x 20cm W, Belt: 162cm L

ChefWorks  
**URBAN**  
COLLECTION





#### BIB APRON NECK STRAP

100/100 poly/polyurethane neck strap with adjustable metal slider, snap closures, one snap branded with Chef Works® logo. Compatible with Largo, Olympia and Seattle bib aprons.

Available in: Black, Blue, Camel, Mustard, Orange, Red, Sea Foam, Tropical Pink, Turquoise, White.

**XNS05** | SIZE: Min Length 55.9cm – Max Length 87.5cm.



#### ENGLISH CHEF BIB



**NAV**  
navy  
(New)

**NCS**  
navy chalk  
stripe

**BCS**  
black chalk  
strip

**GWS**  
charcoal chalk  
stripe

**BLK**  
black

**WHT**  
white

#### ENGLISH CHEF BIB APRON

250 gm² / 6.2 oz, 65/35 yarn-dyed poly/cotton, adjustable by pulling ties.

Available in: Black Chalk Stripe, Charcoal Chalk Stripe, Navy Chalk Stripe, Navy (New).

**A100** | SIZE: 99cm L x 94cm W

#### RE:CHEF BIB

210 gm² / 7.4 oz. 65/35 recycled poly/cotton adjustable by pulling ties

Available in: Black, White.

**REA100** | SIZE: 100cm L x 94cm W

New



#### CROSS-BACK BIB



**BLK**  
black

#### CROSS-BACK BIB APRON

210 gm² / 6.2 oz, 65/35 poly/cotton, adjustable extra wide cross-back ties, two patch pockets

Available in: Black.

**F35-BLK** | SIZE: 90cm L x 79cm W

#### THREE POCKET BIB



**BLK**  
black

#### THREE POCKET BIB APRON

210 gm² / 6.2 oz, 65/35 poly/cotton, adjustable neck buckle, three pockets.

Available in: Black.

**F10** | SIZE: 61cm L x 70cm W





CHALK STRIPE BIB



CHALK STRIPE BIB APRON

192 gm<sup>2</sup> 80/20 yarn-dyed poly/cotton, patch pocket with center divide.

Available in: Black Chalk Stripe.

CSBA | SIZE: 87cm L x 69cm W

BUTCHER (CONTRAST TIES)



BUTCHER (CONTRAST TIES) APRON

200 gm<sup>2</sup> / 6.2 oz, 65/35 yarn-dyed poly/cotton, contrast black ties, adjustable neck buckle, patch pocket with center divide.

Available in: Fine Stripe.

AB012 | SIZE: 86cm L x 61cm W

BISTRO APRON

BLK  
black

SLA  
slate

WHT  
white



BISTRO APRON

210 gm<sup>2</sup> / 6.2 oz, 65/35 poly/cotton, patch pocket with pencil divide. **Available in:** Black, Slate. **F24** | **SIZE:** 81cm L x 70cm W

Sustainable version 6.2 oz. 65/35 recycled poly/cotton **Available in:** Black, White. **REF24** | **SIZE:** 81cm L x 40cm W



CHEF'S FULL LENGTH APRON



CHEF'S FULL LENGTH APRON

210 gm<sup>2</sup> / 6.2 oz, 65/35 poly/cotton, extra long, extra wide, no pocket

Available in: White.

CFLA | SIZE: 102cm L x 97cm W

TAPERED (W/POCKET) APRON

BLK  
black



TAPERED (W/POCKET) APRON

210 gm<sup>2</sup> / 6.2 oz, 65/35 poly/cotton, "flip-over" front flap, looped towel holder, angled pocket

Available in: Black.

BPTA | SIZE: 81cm L x 53cm W

PINSTRIBE BIB



PINSTRIBE BIB APRON

210 gm<sup>2</sup> / 6.2 oz, 65/35 yarn-dyed poly/cotton, adjustable neck buckle, patch pocket with center divide.

Available in: White Pinstripe.

CSAA | SIZE: 87cm L x 69cm W

BUTCHER APRON

NAV  
navy

BLK  
black

WHT  
white

GRY  
grey



BUTCHER APRON

210 gm<sup>2</sup> / 6.2 oz, 65/35 poly/cotton, adjustable neck buckle, patch pocket with center divide.

Available in: Black, White, Grey, Navy.

F8 | SIZE: 86cm L x 61cm W

BIB APRON

BLK  
black

WHT  
white



BIB APRON

210 gm<sup>2</sup> / 6.2 oz, 65/35 poly/cotton, no pocket. **Available in:** Black (APKBL), White (APKDC).

**APKBL/APKDC** | **SIZE:** 84cm L x 70cm W

Sustainable version 65/35 recycled poly/cotton **Available in:** Black, White.

**REAPK** | **SIZE:** 84cm L x 70cm W



HALF BISTRO APRON

BLK  
black

WHT  
white



HALF BISTRO APRON

210 gm<sup>2</sup> / 6.2 oz, 65/35 poly/cotton, patch pocket with center divide

Available in: Black, White.

F28 | SIZE: 48cm L x 70cm W

WAIST APRON



BLK  
black

RED  
red

WAIST APRON

210 gm<sup>2</sup> / 6.2 oz, 65/35 poly/cotton, three pockets

Available in: Black, Red.

F9 | SIZE: 31cm L x 58cm W





# Suiting Collection



To outfit numerous properties, our suiting collection hosts a casual, contemporary and classic offering. With a range of fabrics, fits and colours, this beautifully tailored collection allows individuality, sophistication and performance to the many different roles in hospitality





**BBK**  
black pinstripe

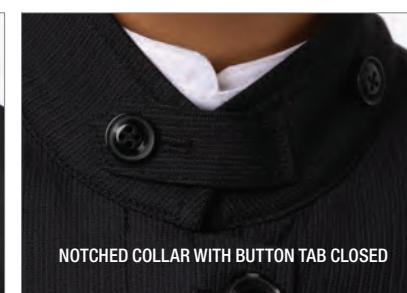
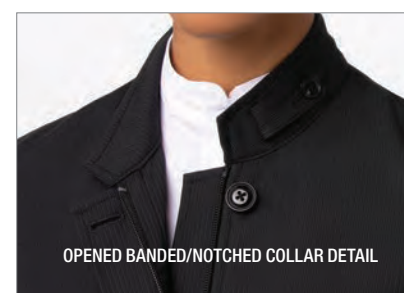
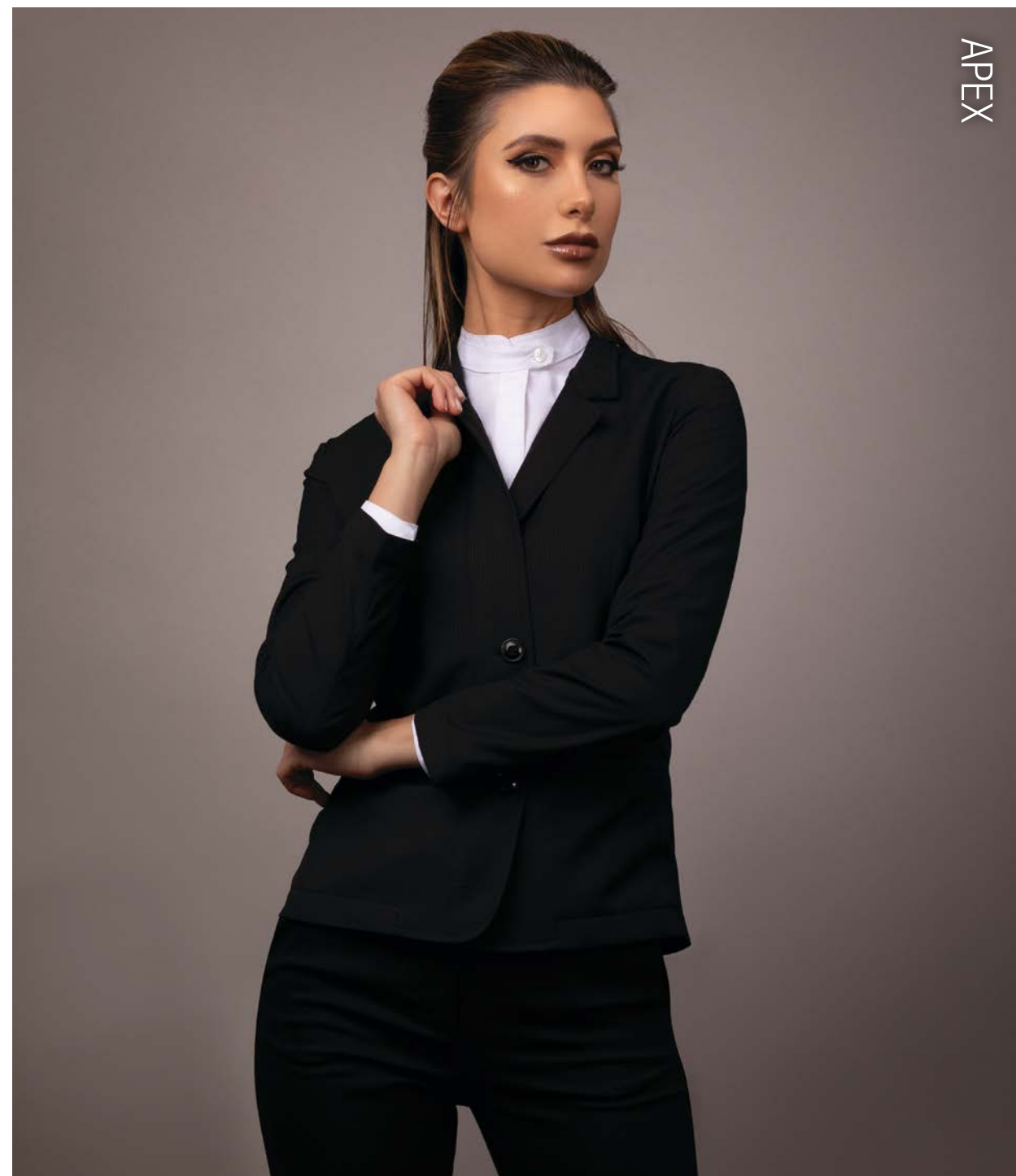
#### APEX CONTEMPORARY MEN'S BANQUET COAT

210 gm<sup>2</sup> / 6.2 oz, 70/30 poly/rayon, zip/button front, concealed placket, closes left-to-right, long sleeve, front coat lining, banded/notched collar with button tab, inset hip pockets, inner left chest pocket, two back vent openings. Women's fit available CQZ01W, see page 32-33).

**Available in:** Black pinstrip.

**CQZ01** | SIZES: S-4XL **MF 1**

 ChefWorks  
**contemporary**  
collection



**BLK**  
black

#### CONTEMPORARY WOMEN'S BANQUET COAT

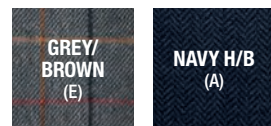
210 gm<sup>2</sup> / 6.2 oz, 70/30 poly/rayon, zip/button front, concealed placket, closes right to left, front coat lining, long sleeves, banded/notched collar with button tab, inset hip pockets, inner left chest pocket and two back vent openings. Men's style available, CQZ01 (see page 10).

**Available in:** Black.

**CQZ01W** | SIZES: S-3XL **MF 1**

 ChefWorks  
**contemporary**  
collection





Elegantly designed to encourage individuality and create a unique business casual look.



#### QUEBEC TWEED JACKET

40/40/20 poly/wool/mixed fibres, slim fit, two button front, centre vent, two flap pockets, welt chest pocket, two internal pockets, notch lapel Teflon finished jacket.

Available in: Grey/Brown (E), Navy (A).

3836 | SIZES: Short & Long 38-44, Reg 36-50

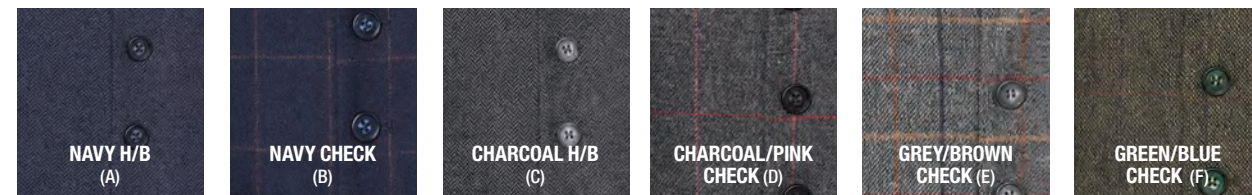


#### MONTREAL WOMEN'S TWEED JACKET

40/40/20 wool/poly/mixed fibres, slim fit, one button front, centre vent, two jet pockets, welt chest pocket, Teflon finished jacket.

Available in: Grey/Brown (E), Navy (A).

2344 | SIZES: Petite 8-14, Reg 6-24, Long 8-14



#### MEMPHIS TWEED WAISTCOAT

40/40/20 wool/polyester/mixed fibres, notch lapel, five button front, two welt pockets, cloth back with vent detail and adjuster, Teflon finish waistcoat

Available in: NavyH/B (A), Navy Check (B), Charcoal H/B (C), Charcoal Charc/Pink (D), Grey/Brown Check (E), Green/Blue (F).

1463 | SIZES: Reg S - 2XL



#### NASHVILLE WOMEN'S TWEED WAISTCOAT

40/40/20 wool/polyester/mixed fibres, notch lapel, five button front, two welt pockets, cloth back with vent detail and adjuster, Teflon finish waistcoat.

Available in: NavyH/B (A), Navy Check (B), Charcoal H/B (C), Charcoal Charc/Pink (D), Grey/Brown Check (E), Green/Blue (F).

2310 | SIZES: Reg XS - 2XL





CASSINO JACKET

- BLACK (D)
- CHARCOAL (C)
- LIGHT GREY (G)
- MID BLUE (H)

**CASSINO SLIM FIT JACKET**  
350 gm² 54/44/2 poly/wool/lycra, single breasted slim fit jacket, shorter length, two button front, side vents, ticket pocket, slim lapels with saddle stitching, piano faced interior with slim pocket jets.  
**Available in:** Black (D), Charcoal (C), Light Grey (G), Mid Blue (H).

**5985 | SIZES:** Reg 34" - 46", Short & Long 34" - 44"

Blending premium lightweight European fabrics with superior technical attributes



**OLIVIA CHECK WAISTCOAT**  
64% Polyester, 34% Viscose, 2% Lycra. Tailored fit, 5 button front, 2 welt pockets, part lining back with adjuster.  
**Available in:** Navy Check, Grey Check, Green Check.

**2363 | SIZES:**XS-2XL



**EMILIO CHECK WAISTCOAT**  
64% Polyester, 34% Viscose, 2% Lycra. Tailored fit, 5 button front, 2 welt pockets, part lining back with adjuster.  
**Available in:** Navy Check, Grey Check, Green Check.

**1726 | SIZES:** S - 2XL



**STELLA CHECK TROUSER**  
64% Polyester, 34% Viscose, 2% Lycra. Slim leg, front hook fastening, 2 side pockets, mock hip pockets, feature jogger waist.  
**Available in:** Navy Check, Grey Check.

**2364 | SIZES:** 6-26 LENGTH: Reg 29"



**FABIAN CHECK TROUSER**  
64% Polyester, 34% Viscose, 2% Lycra. Slim fit, flat front, 2 side pockets, 1 rear pocket.  
**Available in:** Navy Check, Grey Check.

**8934 | SIZES:** 28-42" LENGTH S-29.5", R-31.5", L-33" & 36" unfinished







AVALINO JACKET

#### AVALINO TAILORED FIT JACKET

270 gm<sup>2</sup> 54/44/2 poly/wool/lycra, single breasted jacket, tailored fit, two button front, side vents, three inside pockets, mobile phone pocket.

**Available in:** Black, Charcoal, Light Grey, Mid Blue.

**5647** | **SIZES:** Short 36"-48", Reg 34"- 52", Long 38"- 48"



AVALINO TROUSERS

#### AVALINO TAILORED FIT TROUSER

270 gm<sup>2</sup> 54/44/2 poly/wool/lycra, flat front trouser, tailored fit, two side pockets, one rear pocket.

**Available in:** Black, Charcoal, Light Grey, Mid Blue.

**8387** | **SIZES:** **WAIST:** 28" - 40" **LENGTH:** Short 29.5", Reg 31.5", Long 33", Unfinished 36"



TORINO TROUSER

#### TORINO SLIM LEG TROUSER

270 gm<sup>2</sup> 54/44/2 poly/wool/lycra slim leg trouser, two side pockets and two mock back pockets.

**Available in:** Black, Charcoal, Light Grey, Mid Blue.

**2294** | **SIZES:** 4 - 24 **LENGTH:** Short 27", Reg 29", Long 31", XL 33", Unfinished 36"



GENOA TROUSER

#### GENOA TAILORED LEG TROUSER

270 gm<sup>2</sup> 54/44/2 poly/wool/lycra, slim leg profile trouser, front hook fastening, two side pockets, mock rear pockets, belt loops.

**Available in:** Black, Charcoal, Light Grey, Mid Blue.

**2234** | **SIZES:** 4 - 24 **LENGTH:** Short 27", Reg 29", Long 31", XL 33", Unfinished 36"



CASSINO TROUSER

#### CASSINO SLIM FIT TROUSER

270 gm<sup>2</sup> 54/44/2 poly/wool/lycra, flat front slim fit trouser, two side pockets, one rear pocket.

**Available in:** Black, Charcoal, Light Grey, Mid Blue.

**8655** | **SIZES:** **WAIST:** 28" - 40" **LENGTH:** Short 29.5", Reg 31.5", Long 33", Unfinished 36"



NOVARA JACKET

#### NOVARA TAILORED FIT JACKET

270 gm<sup>2</sup> 54/44/2 poly/wool/lycra, tailored fit, two button jacket, lapel and pocket contrast detail, centre vent, tailored back panels, one inside pocket.

**Available in:** Black, Charcoal, Light Grey, Mid Blue.

**2222** | **SIZES:** Petite 6 - 16, Reg 6 - 24, Long 8 - 18



TERAMO DRESS

#### TERAMO DRESS

270 gm<sup>2</sup> 54/44/2 poly/wool/lycra, shift dress with princess seam, short sleeve, centre vent, full stretch lining.

**Available in:** Black, Charcoal, Light Grey, Mid Blue.

**2289** | **SIZES:** Regular 6-24, Long 8-20.



NUMANA SKIRT

#### NUMANA SKIRT

270 gm<sup>2</sup> 54/44/2 poly/wool/lycra, straight skirt, centre vent, shaped back panels, full stretch lining.

**Available in:** Black, Charcoal, Light Grey, Mid Blue.

**2224** | **SIZES:** Reg 4 - 24, Long 8 - 24







Perfectly balances high quality tailoring  
with cutting edge shape memory technology

NAVY  
(A)

MID GREY  
(G)

CHARCOAL  
(C)

BLACK  
(D)

#### ROSEWOOD SLIM FIT JACKET

325 gm² 65/35 poly/wool, short, slim fit, one button jacket, peaked lapel, two flap and two jetted pockets, plain back, tailored back panels, one inside pocket

Available in: Black, Charcoal, Mid Grey, Navy.

2263 | SIZES: Petite 6 - 16, Reg 4 - 18, Long 8 - 16



CORINTHIA DRESS

#### CORINTHIA DRESS

325 gm² 65/35 poly/wool, beautifully tailored V-neck dress, short sleeve, breast darts, centre vent, full stretch lining.

Available in: Black, Charcoal, Mid Grey, Navy.

2246 | SIZES: Reg 6 - 24 Long 8-20.



HEMPEL TROUSER

#### HEMPEL SLIM FIT TROUSER

325 gm² 65/35 poly/wool, slim leg trouser, side pockets, mock hip pockets.

Available in: Black, Charcoal, Mid Grey, Navy.

2306 | SIZES: 4-24 LENGTH: Short 27", Reg 29", Long 31", XL 33", Unfinished 36".



WALDORF WAISTCOAT

#### WALDORF LADIES WAISTCOAT

325 gm² 65/35 poly/wool, single breasted waistcoat, 4 button front, lining backed with strap adjuster, two welt pockets

Available in: Black, Charcoal, Mid Grey, Navy.

2260 | SIZES: Long 6 - 24



WYNDHAM SKIRT

#### WYNDHAM SKIRT

325 gm² 65/35 poly/wool, straight skirt, centre vent, shaped back panels, full stretch lining.

Available in: Black, Charcoal, Mid Grey, Navy.

2229 | SIZES: Reg 6 - 24, Long 8 - 24, X-Long 8 - 24





*A go to all-round performer offering unrivalled value*

NAVY  
(A)

MID GREY  
(G)

CHARCOAL  
(C)

BLACK  
(D)

#### ALDWYCH TAILORED FIT TROUSER

325 gm² 65/35 poly/wool, flat front tailored fit trouser, two side pockets, one rear pocket.

Available in: Black, Charcoal, Mid Grey, Navy

8557 | SIZES: WAIST: 28" - 48" LENGTH: Short 29.5", Reg 31.5", Long 33", Unfinished 36".

BROOK  
TAVERNER  
SINCE 1912



#### ALDWYCH TAILORED FIT JACKET

325 gm² 65/35 poly/wool, single breasted tailored fit jacket, two button front, side vents, three inside pockets, mobile phone pocket.

Available in: Navy, Charcoal, Black, Mid Grey.

3125 | SIZES: Short 36" - 48", Reg 36" - 56", Long 38" - 48"



#### CAPITAL WAISTCOAT

325 gm² 65/35 poly/wool, single breasted waistcoat, 5 button front, lining backed with strap adjuster, two welt pockets.

Available in Navy, Charcoal, Black, Mid Grey.

1300 | SIZES: Reg 36" - 54"





PHOENIX JACKET

#### PHOENIX TAILORED FIT JACKET

330 gm<sup>2</sup> / 9.73 oz, 64/34/2 poly/viscose/lycra, two button, twin rear vents.  
**Available in:** Black, Charcoal Pin Dot, Navy, Navy Pin Dot.

**3552** | **SIZES:** Short 36" - 48", Reg 34" - 56", Long 38" - 48"



PHOENIX TROUSER

#### PHOENIX TAILORED FIT TROUSER

330 gm<sup>2</sup> / 9.73 oz, 64/34/2 poly/viscose/lycra, two button, twin rear vents.  
**Available in:** Black, Charcoal Pin Dot, Navy, Navy Pin Dot.

**8755** | **SIZES:** **WAIST:** 28" - 52" **LENGTH:** Short 29.5", Reg 31.5", Long 33", Unfinished 36".



PROTEUS WAISTCOAT

#### PROTEUS WAISTCOAT

330 gm<sup>2</sup> / 9.73 oz, 64/34/2 poly/viscose/lycra, notch lapels, 5 button front, cloth backed, two welt pockets.  
**Available in:** Black, Charcoal Pin Dot, Navy, Navy Pin Dot.

**1449** | **SIZES:** Reg 34" - 56"



*Design-led collection  
delivers on-trend,  
on-time and  
on budget*

BROOK  
TAVERNER  
SINCE 1912

OEKO-TEX®  
STANDARD 100  
by OEKO-TEX®

BLACK  
(D)

CHARCOAL  
PIN DOT (C)

NAVY  
(B)

NAVY PIN DOT  
(A)



ARIEL JACKET

#### ARIEL SLIM FIT JACKET

330 gm<sup>2</sup> / 9.73 oz, 64/34/2 poly/viscose/lycra, one button jacket, centre vent.  
**Available in:** Navy Pin Dot, Navy, Charcoal Pin Dot, Black.

**2272** | **SIZES:** Petite 6 - 16, Reg 4 - 24, Long 6 - 16



LARISSA WAISTCOAT

#### LARISSA WAISTCOAT

330 gm<sup>2</sup> / 9.73 oz, 64/34/2 poly/viscose/lycra, notch lapels, 5 button front, cloth backed, two welt pockets.  
**Available in:** Navy Pin Dot, Navy, Charcoal Pin Dot, Black.

**2293** | **SIZES:** Reg 6-24



JULIET STRAIGHT SKIRT

#### JULIET STRAIGHT SKIRT

330 gm<sup>2</sup> / 9.73 oz, 64/34/2 poly/viscose/lycra, rear panel detail with centre vent, full stretch lining.  
**Available in:** Navy Pin Dot, Navy, Charcoal Pin Dot, Black.

**2275** | **SIZES:** Reg 4 - 24, Long 8 - 30



OPHELIA SLIM FIT TROUSER

#### OPHELIA SLIM FIT TROUSER

330 gm<sup>2</sup> / 9.73 oz, 64/34/2 poly/viscose/lycra, side pockets, mock hip pockets.  
**Available in:** Navy Pin Dot, Navy, Charcoal Pin Dot, Black.

**2276** | **SIZES:** 4-24 **LENGTH:** Short 27", Reg 29", Long 31", X-Long 33", Unfinished 36"





BROOK  
TAVERNER  
SINCE 1912

OEKO-TEX  
STANDARD 100  
by Hohenstein

NAVY  
(A)

BLACK  
(D)

#### LUNA WAISTCOAT

335 gm² 100% Polyester, 5 button front, two welt pockets, lining backed with adjuster.

Available in: Black, Navy.

**2257** | SIZES: XS - XXL

#### PLUTO SKIRT

335 gm² 100% polyester straight skirt centre vent, fully lined.

Available in: Black, Navy.

**2258** | SIZES: 4-26 LENGTH: Reg 22".

#### JUPITER TAILORED FIT JACKET

335 gm² 100% Polyester, Single breasted jacket, tailored fit, two button front, side vents.

Available in: Black, Navy.

**3344** | SIZES: Short 38" - 50", Reg 34" - 50", Long 40" - 46"

#### MARS TAILORED FIT TROUSER

335 gm² 100% polyester flat front tailored trouser, two side and on back pocket, key loop.

Available in: Black, Navy.

**8648** | SIZES: WAIST: 26" - 48", LENGTH: Short 29.5", Reg 31.5", Long 33", Unfinished 36".

#### MERCURY WAISTCOAT

#### MERCURY WAISTCOAT

335 gm² 100% Polyester, 5 button front, two welt pockets, lining backed with adjuster.

Available in: Black, Navy.

**1295** | SIZES: XS - XL

#### VENUS TROUSER

#### VENUS TROUSER

335 gm² 100% Polyester, straight leg, slim waistband with belt loops & key loop, two side pockets, mock rear pockets.

Available in: Black, Navy.

**2256** | SIZES: 4 - 26 LENGTH: Short 27", Reg 29", Long 31", XL 33", Unfinished 36".

#### NEPTUNE DRESS

#### NEPTUNE DRESS

220 gm² 95/5 polyester/elastane ¾ sleeve, round neck, flattering fit with waistline detail and stretch lining.

Available in: Black, Navy.

**2287** | SIZES: XS-XL

#### SATURN JACKET

#### SATURN TAILORED FIT JACKET

335 gm² 100% Polyester, short, one button jacket, tailored fit, slim lapel with seam detail, centre vent.

Available in: Black, Navy.

**2255** | SIZES: Reg 4 - 26







We can dress you from head-to-toe with absolute quality and comfort. Our curated collection of ‘Good, Better and Best’ footwear includes Shoes for Crews, who design and manufacture a stylish collection that prevent slips, trips and falls in the workplace. These shoes provide slip-resistance to keep you safe with comfort, quality, value and style to keep you happy whatever your hospitality role



**OLD SCHOOL IV MEN'S**

Extra Cushioning. Trip Guard. Water-Resistant. Natural Fit. Coated Leather Upper. Removable Insole.  
**Available in:** Black, White.

**36111** (black) | **SIZES:** 5-12 (38-47) **38960** (white) | **SIZES:** 6-12 (39-47)



**OLD SCHOOL IV WOMEN'S**

Extra Cushioning. Trip Guard. Water-Resistant. Natural Fit. Coated Leather Upper. Removable Insole.  
**Available in:** Black, White.

**39362** (black) | **SIZES:** 2.5-9 (35-43) **36320** (white) | **SIZES:** 3-8 (36-42)



**TRISTON II**

CE Certified. OB Certified. Zone Traction. Trip Guard. Water-Resistant. Comfort Fit.  
**Available in:** Black.

**80047** | **SIZES:** 3-12 (36-47)



**RADIUM**

250gm Superior SFC slip-resistant outsole with TripGuard, water resistant, ultra-lightweight, removable cushioned insole, wide fit.  
**Available in:** Black.

**69578** | **SIZES:** 4-12 (37-47). 37-47 EU



**ZINC BLACK**

CE Certified. OB Certified. Ultra Lightweight. Zone Traction. Trip Guard. Water-Resistant. Comfort Fit. Vegan.  
**Available in:** Black.

**66064** | **SIZES:** 4-13 (37-48). 37 - 48 EU







LIBERTY WOMEN'S

Zone Traction. Trip Guard. Water-Resistant. Natural Fit. Vegan. Removable Insole.  
**Available in:** Black.

**37255** | **SIZES:** 2.5-43 (35-43)



LIBERTY WOMEN'S - WHITE OUTSOLE

Zone Traction. Trip Guard. Water-Resistant. Natural Fit. Vegan. Removable Insole.  
**Available in:** Black w/ White Outsole.

**35353** | **SIZES:** 2.5-9 UK (35-45)



FREESTYLE II

Zone Traction. Trip Guard. Water-Resistant. Natural Fit. Vegan. Removable Insole.  
**Available in:** Black.

**38140** | **SIZES:** 5-13 UK (38 - 48 EU)



FREESTYLE II - WHITE OUTSOLE

Zone Traction. Trip Guard. Water-Resistant. Natural Fit. Vegan. Removable Insole.  
**Available in:** Black w/ White Outsole.

**32835** | **SIZES:** 5-13 UK (38 - 48 EU)



CONDOR MEN'S

CE Certified. OB Certified. Zone Traction. Trip Guard. Ventilated. Water-Resistant. Spill Guard. Natural Fit. Leather Upper. Removable Insole.  
**Available in:** Black, White.

**28777** (black) | **SIZES:** 5-13 (38-48) **29166** (white) | **SIZES:** 5-12 (38-47)



CONDOR WOMEN'S - WHITE

CE Certified. OB Certified. Zone Traction. Trip Guard. Ventilated. Water-Resistant. Spill Guard. Natural Fit. Leather Upper. Removable Insole.  
**Available in:** Black, White.

**26730** (black) | **SIZES:** 2.5-9 (35-43) **27041** (white) | **SIZES:** 3-8 (36-42)



CATER II MEN'S & WOMEN'S

CE Certified. OB Certified. Trip Guard. Water-resistant. Removable Insole.  
**Available in:** Black.

**41439** | MEN'S **SIZES:** 5-15 (38-50)  
**40187** | WOMEN'S **SIZES:** 2.5-8 (35-42)



SALOON II MEN'S & WOMEN'S

CE Certified. OB Certified. Trip Guard. Water-resistant. Removable Insole.  
**Available in** BLACK

**43261** | MEN'S **SIZES:** 5-15 (38-50)  
**47808** | WOMEN'S **SIZES:** 2.5-8 (35-42)



WILLA WOMEN'S

CE Certified. OB Certified. Trip Guard. Water-Resistant. Tailored Fit. Leather Upper. Removable Insole.  
**Available in:** Black.

**55452** | **SIZES:** 2.5-8 (35-42)



EXECUTIVE WING TIP III MEN'S

CE Certified. OB Certified. Water-Resistant. Natural Fit. Leather Upper. Removable Insole.  
**Available in:** Black.

**2030** | **SIZES:** 5-13 UK (38 - 47 EU)

SHOES FOR CREWS SHOE SIZES								
EU Women's Size	35	36	37	38	39	40	41	42
UK Women's Size	2.5	3	4	5	6	6.5	7	8

SHOES FOR CREWS SHOE SIZES														
EU Men's Size	38	39	40	41	42	43	44	45	46	47	48	49	50	
UK Men's Size	5	6	6.5	42	8	9	9.5	10	11	12	13	14	15	



MARY JANE II WOMEN'S

CE Certified. OB Certified. Water-Resistant. Wide Fit. Leather Upper.  
**Available in:** Black.

**3002** | **SIZES:** 2.5-9.5 UK (35 - 44 EU)





The ultimate professional footwear style choice, suitable for challenging environments, providing ultimate support throughout your shift. At the heart of all models is the original Birkenstock footbed. The construction makes it feel like you're standing in sand, helping your feet feel as comfortable as possible for hours on end, supporting health and promoting wellbeing

**BIRKENSTOCK**



#### TOKIO SUPER GRIP

Anatomically shaped cork-latex footbed. Upper: smooth leather. Footbed lining: suede. Sole: cushioning EVA midsole with nonslip, oil and grease resistant rubber outsole. Individually adjustable metal pin buckles.

Available in: Black.

**0061194/96 (BLACK)** | SIZES: 2.5-13 (UK) / 35-48 (EU)



#### BOSTON SUPER GRIP

Anatomically shaped cork-latex footbed. Upper: natural leather. Footbed lining: suede. Sole: slip-resistant rubber-EVA sole. One strap with an individually adjustable metal pin buckle.

Available in: Black.

**0060194/96 (BLACK)** | SIZES: 2.5-13 (UK) / 35-48 (EU)



#### SUPER BIRKI

Removable, anatomically shaped cork-latex footbed, washable at up to 30°C. Material: PU (polyurethane) Footbed lining: fabric. Sole: PU (polyurethane), nonslip, oil and grease-resistant

Available in: Black.

**0068011 (BLACK)** | SIZES: 2.5-13 (UK) / 35-48 (EU)



#### QS500

Removable, anatomically shaped cork-microfiber footbed. Material: water-resistant oiled nubuck leather (WRU). Footbed lining: microfiber. Sole: nitrile rubber (SRC) Steel toe (200 joules) with scratch-resistant toe cap.

Available in: Brown.

**1011232 (BROWN)** | SIZES: 2.5-13 (UK) / 35-48 (EU)



#### QS700

Removable, anatomically shaped cork-microfiber footbed. Material: water-resistant oiled nubuck leather (WRU) Footbed lining: microfiber nitrile rubber (SRC) steel toe (200 joules) with scratch-resistant toe cap.

Available in: Brown.

**1011237 (BROWN)** | SIZES: 2.5-13 (UK) / 35-48 (EU)

BIRKENSTOCK SIZE CHART			
WOMENS		MENS	
EU	UK	EU	UK
35	2.5	39	5.5
36	3.5	40	7
37	4.5	41	7.5
38	5	42	8
39	5.5	43	9
40	7	44	9.5
41	7.5	45	10.5
42	8	46	11.5
43	9	47	12
		48	13
		49	14
		50	14.5



Shoe Collection





WearerTech who specialise in producing comfortable slip-resistant shoes. Their shoes have been created in collaboration with Salford University's Knee, Ankle and Foot Research Centre using biomechanics to eliminate pain and discomfort specifically for those working in catering and hospitality.



Shoe Collection



BKW (black upper/white sole)



BLW (blue upper/white sole)



BKB (black upper/black sole)



BKB (black upper/black sole)



BRW (brown upper/white sole)



#### RELIEVE

Closed back lace-up, comfortable lightweight shoe, stretch linings, breathable uppers, raised heel, Ultra-Grip® slip-resistant technology. Add your preferred Insole to your order.

**Available in:** Black Upper/Black Sole, Black Upper/White Sole, Blue Upper/White Sole, Brown Upper/White Sole.

**4100** | **SIZES:** 36 - 47 EU, 3 - 12 UK

#### RELIEVE SAFETY TOE

**Available in:** Black Upper/Black Sole

**6100** | **SIZES:** 36 - 47 EU, 3 - 12 UK



BKB (black upper/black sole)



BKW (black upper/white sole)



BKB (black upper/black sole)



#### TRANSFORM

Lightweight, closed-back laces-ups with stretch lining, breathable uppers, raised heel and Ultra-Grip® slip-resistant technology sole. Add your preferred Insole to your order.

**Available in:** Black Upper/Black Sole, Black Upper/White Sole.

**4400** | **SIZES:** 36 - 47 EU, 3 - 12 UK

#### TRANSFORM SAFETY TOE

**Available in:** Black Upper/Black Sole

**6400** | **SIZES:** 36 - 47 EU, 3 - 12 UK



BKB (black upper/black sole)



BKW (black upper/white sole)



BKB (black upper/white sole)



#### REFRESH

Open back, lightweight, raised heel, breathable uppers, stretch linings, Ultra-Grip® slip-resistant technology, safety toe cap option, choice of three insoles (see page 163). Add your preferred Insole to your order.

**Available in:** Black Upper/Black Sole, Black Upper/White Sole.

**4300** | **SIZES:** 36 - 47 EU, 3 - 12 UK

#### REFRESH SAFETY TOE

**Available in:** Black Upper/Black Sole.

**6300** | **SIZES:** 36 - 47 EU, 3 - 12 UK

WEARERTECH SHOE SIZES																
EU Women's Size	35	36	37	38	39	40	41	42								
EU Men's Size				38	39	40	41	42	43	44	45	46	47	48	49	50
UK Women's Size	2	3	4	5	6	6.5	7	8	9	10	10.5	11	12			
UK Men's Size		3	4	5	6	6.5	7	8	9	10	10.5	11	12			





# Headwear & Accessories Collection

No look is complete without the perfect accessory. Keep clean and cool while looking the part with our many headwear choices and keep safe and hygienic with our many face covers





BCCT-GRY  
(grey)

BCCT-BLU  
(blue)

BCCT-RED  
(red)

BCCV-BLK  
(solid black)

HC008-GRY  
(solid grey)

HC008-RED  
(solid red)

#### COOL VENT™ BASEBALL HAT

150 gm<sup>2</sup> / 4.4 oz, 100% polyester all over Cool Vent™ fabric, contrast colour sandwich trim, adjustable buckle closure, one size fits most  
**Available in:** Grey, Blue, Red, Solid Black, Solid Grey, Solid Red.

BCCT, BCCV-BLK, HC008-GRY & HC008-RED | SIZE: ONE SIZE FITS MOST



DFWB-WHT  
(white)

DFBB-BLK  
(black)

DFCV-GRY  
(grey)

DFCV-DGY  
(deep grey)

DFCV-PNS  
(fine stripe)

DFCV-MER  
(merlot)

#### COOL VENT™ BEANIE

210 gm<sup>2</sup> / 6.2 oz, 65/35 poly/cotton base, Cool Vent™ mesh top, adjustable Velcro® closure, one size fits most  
**Available in:** White, Black, Grey, Deep Grey, Finestripe.

DFWB-WHT, DFBB-BLK, DFCV-GRY DFCV-DGY, DFCV-PNS & DFCV-MER | SIZE: ONE SIZE FITS MOST



#### BASEBALL HAT

260 gm<sup>2</sup> 7.8oz, 100% cotton , adjustable buckle closure.  
**Available in:** Black.

BCS0 | SIZE: ONE SIZE FITS MOST



#### HEAD WRAP

210 gm<sup>2</sup> 6.2oz 65/35 poly/cotton, ties on back.  
**Available in:** Black.

SCBL | SIZE: ONE SIZE FITS MOST



NTM (nutmeg)

SGY (steel grey)

#### ROCKFORD DRIVER CAP

315 gm<sup>2</sup> / 9.3 oz, 100% cotton, enzyme washed canvas, elastic inner band, two sizes available  
**Available in:** Nutmeg, Steel Grey.

HBKV010 | SIZES: S / M & L / XL



BLK (black)

GRY (grey)

WHT (white)

#### DRIVER CAP

260 gm<sup>2</sup> / 7.8oz, 96/4 Cotton twill with spandex, built-in sweat guard, two sizes available  
**Available in:** Black, Grey, White.

HB001 | SIZES: S / M & L / XL



#### HARTFORD BEANIE

160 gm<sup>2</sup> / 4.7 oz, 65/35 poly/cotton, contrast Cool Vent™ top, adjustable Velcro® closure, one size fits most  
**Available in:** Slate Blue.

HBLW014 | SIZE: ONE SIZE FITS MOST



BLK (black)

WHT (white)

#### CHEF HAT

210 gm<sup>2</sup> / 6.2 oz, 65/35 poly/cotton, adjustable Velcro® closure, one size fits most  
**Available in:** Black, White.

CHAT BHAT | SIZE: ONE SIZE FITS MOST



WHT (white)

#### LE TOQUE EUROPEAN STYLE

Lightweight poly-viscose, non-woven, oval top pleat, fully adjustable, one size fits most in either 9 inches or 12 inches (23cm Height or 31cm Height)  
**Available in:** White.  
**PLEA-WHT-9** | SIZE: 9" (23cm)  
**PLEA-WHT-12** | SIZE: 12" (31cm)



BLK (black)

WHT (white)

#### CHEF TOQUE

210 gm<sup>2</sup> / 6.2 oz, 65/35 poly/cotton base. Adjustable buckle closure, metal grommet air vents, pre-tested for strength and durability.  
**Available in:** Black, White.

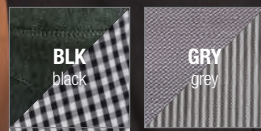
TOCP | SIZE: ONE SIZE FITS MOST



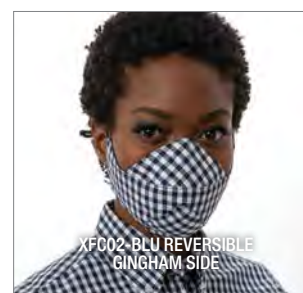




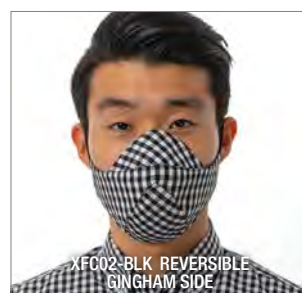
SKILD SERIES™ XFC02 FACE COVER



SKILD SERIES™ XFC02 FACE COVER



XFC02-BLU REVERSIBLE  
GINGHAM SIDE



XFC02-BLK REVERSIBLE  
GINGHAM SIDE

#### SKILD SERIES™ XFC02 FACE COVER

Reversible, washable, reusable, lightweight, breathable face cover. Contoured panel design for comfort and adjustable ear loops. No embroidery on this item. **No returns or exchanges on this item.** Available in: **Black:** Black denim side: 4.7 oz./160gm² 100% cotton, black gingham side: 3.1 oz./106 gm² 65/35 poly/cotton.

**XFC02** (Pack of six) | **SIZE:** ONE SIZE FITS MOST.

#### DISCLAIMER:

SKILD Series™ face coverings are individually wrapped to maintain hygiene standards. These face coverings are not surgical masks or for other medical use and are not FDA-approved, CDC-certified or designed to be any other type of medical-grade mask. However, CDC has advised the use of simple cloth face coverings to slow the spread of viruses and help people, who may have a virus and do not know it, from transmitting it to others. For individual use only. Do not share face coverings.

The AXQ face cover is designed to aid defence against the spread of infection. It makes no assurances that it can prevent transmission or infection of disease or viruses. It is not a medical or clinical face mask and as such should not be used for this purpose, it should not be used under any circumstances where infection level is high and in any exposure to high level heat sources or combustible substances.

All face covers and masks for sale through Chef Works are for individual use only. Do not share face coverings. No exchanges or returns on face covers or face masks.



XFC01-CHR SOLID SIDE



XFC01-GRY SOLID SIDE

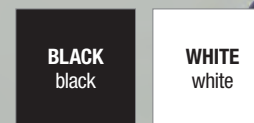
#### SKILD SERIES™ XFC01 FACE COVER

Reversible, washable, reusable, lightweight, breathable face cover. Contoured panel design for comfort and adjustable ear loops. No embroidery on this item. **No returns or exchanges on this item.** Available in: **Black:** Black denim side: 4.7 oz./160gm² 100% cotton, black gingham side: 3.1 oz./106 gm² 65/35 poly/cotton.

**XFC01** (Pack of six) | **SIZE:** ONE SIZE FITS MOST.



AXQ FACE COVER



#### AXQ FACE COVER

95/5 Polyester/Elastane 4-way stretch breathable scuba fabric. Non-surgical face cover with two ear slots on each side to adjust fit. Washable at 60°. No returns or exchanges on this item.

Available in: Black, White.

**XQ001** (Pack of 50) | **SIZE:** ONE SIZE FITS MOST.







EMBROIDERY & ORDER INFO

Chef Works offers in-house embroidery services to help you create a look as individual as you and your company. With impeccable attention to detail, our embroidery experts can help transform your garments into an extension of your brand concept giving your business apparel the professional finish by adding personalisation and corporate branding.

EMBROIDERY COSTS  
LOGOS & TEST

Please refer to your pricing sheet  
All pricing subject to change without notice

ADDITIONAL DETAILS

Please allow a further 5-7 working days, plus shipping time, for delivery on all embroidered/customised orders. Embroidered/customised orders are non-returnable and non-refundable. For every digitised logo/line/flag, one sample electronic digital 'sew out' can be emailed free of charge. Customer approval is required prior to embroidering the garment.

INTERNATIONAL CUSTOMERS

Please note that prices and services may vary from country to country. Contact your local Chef Works Distributor for further information:  
<https://www.chefworks.co.uk/uniforms/corporate/globalnetworks>

SUBMITTING EMBROIDERY  
REQUESTS

Logos can be embroidered on most Chef Works garments.  
Logos will remain on file for future orders, so you will only pay one set-up fee unless your logo changes.  
File type: High res JPG or EPS/DST file  
Colour: Pantone/PMS/Madeira (please specify your colour reference).  
Email: [customerservice@chefworks.co.uk](mailto:customerservice@chefworks.co.uk)

UK FONTS

Choose from our font library. If you have a specific font request please contact Customer Support and we will do our best to assist. Additional costs may incur.

*Script 8*  
**Block 1**  
*Script 6*  
**Typewriter**  
**Helvetica**  
*Script 2*  
**Centurian**  
**Block 2**  
*MV Boli*  
**Times New Roman**

UK EMBROIDERY COLOURS

We use Madeira Poly Neon threads to ensure colour/thread strength and longevity. Choose from our standard colour library. If you have a specific colour request, please contact Customer Support and we will do our best to assist. Additional costs may incur.

1800 (black)	1801 (white)	1758 (brown)	1659 (dk brown)	1887 (merlot)	1784 (burgundy)
1839 (red)	1765 (orange)	1615 (dk grey)	1918 (grey)	1611 (lht grey)	1810 (silver)
1650 (green)	1970 (dk green)	1701 (lht green)	1922 (purple)	1967 (navy blue)	1934 (royal blue)
1843 (blue)	1932 (lht blue)	1846 (teal)	1924 (yellow)	1792 (gold)	1955 (citrus burst)
1775 (dk federal blue)	1857 (chocolate lab)	1885 (camel)	1718 (overcast grey)	1738 (champagne)	1509 (rhubarb)

TO ORDER

CALL: +44(0)113 256 8677  
ONLINE: [www.chefworks.co.uk](http://www.chefworks.co.uk)  
EMAIL: [orders@chefworks.co.uk](mailto:orders@chefworks.co.uk)

If outside the U.K., please consult your local Chef Works team. You can find your nearest by visiting:  
[www.chefworks.co.uk/uniforms/corporate/globalnetworks](http://www.chefworks.co.uk/uniforms/corporate/globalnetworks)

PAYMENT

We accept Visa, MasterCard and American Express. Payment terms are available on approved accounts. Sales tax is applicable in all countries except those states who do not charge sales tax. Prices on our websites are subject to change without notice.

BACK ORDERS

Chef Works maintains a large inventory, however, occasionally a shortage will occur. It is our policy to fill back orders as soon as the merchandise is available, unless otherwise specified at the time of order. Chef Works will send an automated email notification for all pending back orders.

RETURNS POLICY

At Chef Works, one of our core values is customer satisfaction. Should you need to return an item, we will gladly accept it within 30 days of purchase provided it is in resalable condition and has not been worn, damaged, altered, laundered or embroidered. A Returns Authorisation number is required for all returns. For additional details regarding our return policy, please visit our website at [www.chefworks.co.uk](http://www.chefworks.co.uk) or contact Customer Support on +44(0)113 256 0677 [customerservice@chefworks.co.uk](mailto:customerservice@chefworks.co.uk)



Chef Works has the perfect fit for you. To find your perfect fit, we've provided you with three easy-to-follow steps outlined below. Please note our proprietary designs give Chef Works garments individual fits to allow for maximum comfort and function.

FIND YOUR PERFECT FIT IN 3 EASY STEPS

- 1

How do you want your garment to fit? Choose your fit from the colour-coded charts shown on the next few pages.
- 2

What are your measurements? All of our garment size charts refer to actual chest, waist or hip measurements. Match yours to our charts to find your size.
- 3

Pick your garment!

MEASUREMENT GUIDELINES

To get the best fit, stand straight and relax. With a measuring tape, use the illustration shown at the right as a guide and follow instructions below.

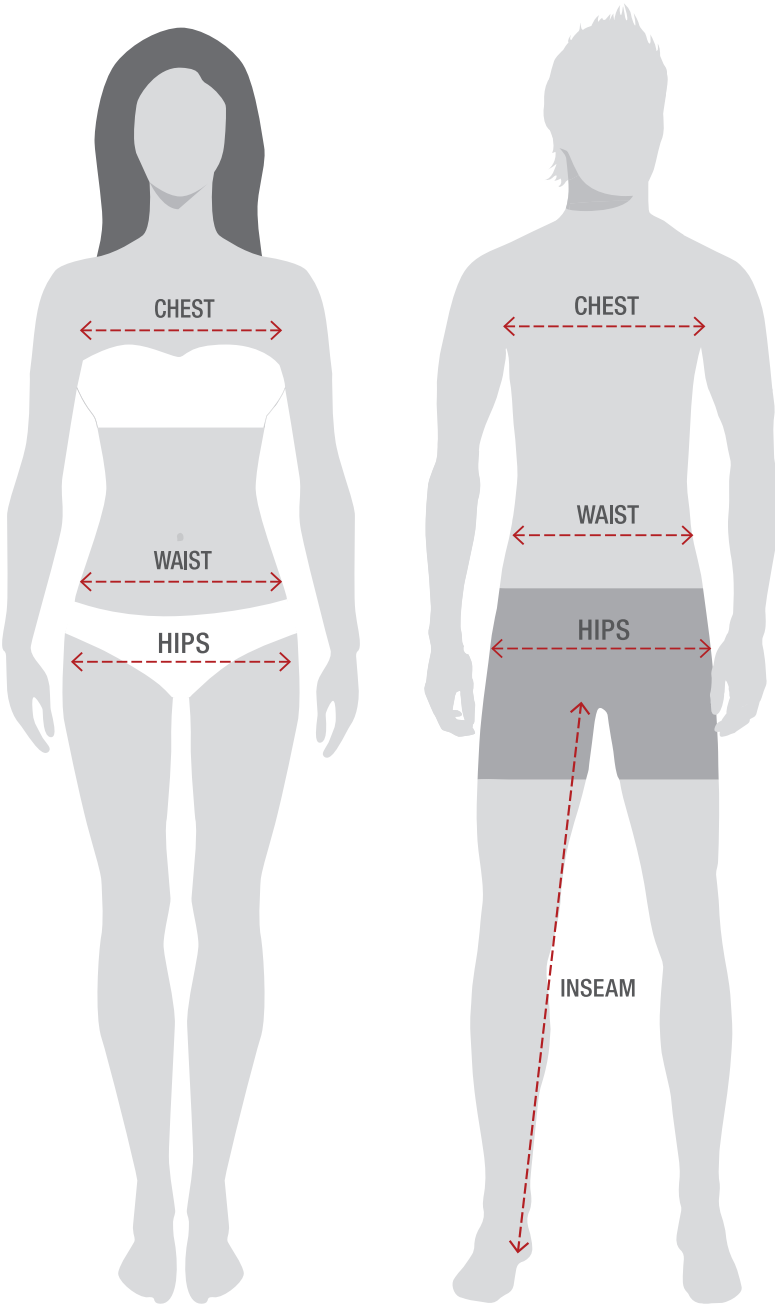
- CHEST:

Measure all the way around your body from the fullest part of the chest/bust with your arms down.
- WAIST:

Measure around your natural waistline above the hips.
- HIPS:

Measure around the widest part of your hips.
- INSEAM:

Measure from the base of the crotch to the bottom of your heel.



MEN'S COATS

At Chef Works, we know coats. We also know we have a coat to suit your style. Categorised here in three different fits, end the guess work and find the one that's right for you.

COAT FITS

MF

CF

GF

Modern Fit

Tailored fit, cut slim through the chest and body.

Classic Fit

Wider cut through the chest; wider sleeves for increased flexibility.

Generous Fit

Loosest fit, cut extra-wide through the body and sleeves.

1

MEN'S/UNISEX COATS (ALPHA)

Chest (in)	32/34	36/38	40/42	44/46	48/50	52/54	56/58	60/62	64/66	68/70	72/74
Size	XS	S	M	L	XL	2XL	3XL	4XL	5XL	6XL	7XL
Chest (cm)	81/86	91/97	102/107	112/117	122/127	132/137	142/147	152/157	163/168	173/178	183/188

2

MEN'S/UNISEX COATS (NUMERIC)

Chest (in)	30	32	34	36	38	40	42	44	46	48	50
Size	30	32	34	36	38	40	42	44	46	48	50
Chest (cm)	76	81	86	91	96	102	107	115	117	122	127

MEN'S/UNISEX COATS CONT'D (NUMERIC)

Chest (in)	52	54	56	58	60	62	64	66	68
Size	52	54	56	58	60	62	64	66	68
Chest (cm)	132	137	142	147	152	157	163	168	173

MEN'S SHIRTS

Shirts are often part of your first impression. Make the right impression in a stylish, well-fitted shirt. Keep your front of the house looking sharp and your kitchen staff looking clean and professional in any one of our wide selection of shirts.

SHIRT FITS	FF	<b>Form Fit</b> A polished fit with stretch fabrics that silhouettes the body.										
	MF	<b>Modern Fit</b> Tailored fit, cut close through the chest, slimmed sleeves.										
	CF	<b>Classic Fit</b> Broadly cut across the shoulders, cut wide through the chest and body, loose-fitting sleeves.										
1	MEN'S/UNISEX SHIRTS											
	Chest (in)	32/34	36/38	40/42	44/46	48/50	52/54	56/58	60/62	64/66	68/70	72/74
	Size	XS	S	M	L	XL	2XL	3XL	4XL	5XL	6XL	7XL
	Chest (cm)	81/86	91/97	102/107	112/117	122/127	132/137	142/147	152/157	163/168	173/178	183/188



# MEN’S PANTS

Chef Works takes pants as seriously as it does coats. We believe pants have three primary purposes; comfort, feel, and function. But that doesn't mean you need to sacrifice style. We know we have the right fit in combination with the right features for you.

PANT FITS

MF

Modern Fit

Our Modern Fit sits on the natural waist, is straight through the hip and thigh, with a straight leg opening.

MT

Modern Straight Fit

Sits slightly above hip, tapered silhouette through the thigh for a contemporary look, 79 cm inseam. Straight through the leg and knee, tapered 45 cm leg opening.

MS

Modern Slim Fit

Sits at hip, slim silhouette through the thigh and leg for a fitted look, 79 cm inseam. Tailored 40cm leg opening.

CF

Classic Fit

Our Classic Fit sits on the natural waist, is relaxed through the hip and thigh, and has a straight leg opening.

1

MEN'S PANTS (ALPHA)

Waist/hips (in)	26/28	30/32	34/36	38/40	42/44	46/48	50/52	54/56	58/60	62/64	66/68
Size	XS	S	M	L	XL	2XL	3XL	4XL	5XL	6XL	7XL
Waist/hips (cm)	66/71	76/81	86/91	97/102	107/112	117/122	127/132	137/142	147/152	157/162	167/172

2

MEN'S PANTS (NUMERIC)

Waist/hips (in)	24	26	28	30	32	34	36	38	40	42	44
Size	00	0	2	4	6	8	10	12	14	16	18
Waist/hips (cm)	61	66	71	76	81	86	91	97	102	107	112

## Women's Sizing

# WOMEN’S COATS

At Chef Works, we know coats. We also know we have a coat to suit your style. Categorized here in two different fits. End the guess work and find your perfect fit.

COAT FITS

MF

**Modern Fit**  
Tailored for a feminine fit with a slightly relaxed silhouette.

SF

**Slim Fit**  
Updated feminine fit skims the body for a form-fitting look.

CF

**Classic Fit**  
Relaxed fit tailored to the female form without compromising professional look.

1

WOMEN'S COATS

Chest (in)	30/32	34/36	38/40	42/44	46/48	50/52	54/56	58/60	62/64
Size	XS	S	M	L	XL	2XL	3XL	4XL	5XL
Chest (cm)	76/81	86/91	97/102	107/112	117/122	127/132	137/142	147/152	157/163

# WOMEN’S SHIRTS

SHIRT FITS	FF	<b>Form Fit</b> A polished fit with stretch fabrics that fit snugly to the curve of the body.								
	SF	<b>Slim Fit</b> Figure-defining silhouette offers a sleeker, slimming fit.								
	MF	<b>Modern Fit</b> Tailored for a feminine fit with a slightly relaxed silhouette.								
	CF	<b>Classic Fit</b> Easy fit silhouette skims the body with an updated drape for a professional, pulled together look.								
1	WOMEN'S SHIRTS									
	Chest (in)	30/32	34/36	38/40	42/44	46/48	50/52	54/56	58/60	62/64
	Size	XS	S	M	L	XL	2XL	3XL	4XL	5XL
	Chest (cm)	76/81	86/91	97/102	107/112	117/122	127/132	137/142	147/152	157/163

# WOMEN’S PANTS

Chef Works take pants as seriously as it does coats. We believe pants have three primary purposes; comfort, feel, and function. However that doesn't mean you need to sacrifice style. We know we have the right fit in combination with the right features for you. Find your perfect fit with our wide selection of pants.

PANT FITS

SF

Slim Fit

Sits at hip, fitted silhouette through the thigh and leg for a slim look, 79 cm inseam. Tailored 41 cm leg opening.

MF

Modern Fit

Sits on natural waist, streamlined silhouette through the thigh and leg for a polished look, 79 cm inseam. Slight bootcut 47 cm leg opening.

RF

Relaxed Fit

Sits on natural waist, relaxed silhouette through thigh and leg for a professional look, 80 cm inseam. Slight flare 51 cm leg opening.

1

WOMEN'S PANTS (ALPHA)

Waist/hips (in)	26/28	30/32	34/36	38/40	42/44	46/48	50/52
Size	XS	S	M	L	XL	2XL	3XL
Waist/hips (cm)	66/71	76/81	86/91	97/102	107/112	117/122	127/132

2

WOMEN'S PANTS (NUMERIC)

Waist/hips (in)	24	26	28	30	32	34	36	38	40	42	44
Size	00	0	2	4	6	8	10	12	14	16	18
Waist/hips (cm)	61	66	71	76	81	86	91	97	102	107	112



# Corporate Headquarters

Chef Works can be found in over 90 countries across the globe. To find your nearest outlet or distributor please contact your nearest corporate office or visit:  
<https://www.chefworks.co.uk/uniforms/corporate/globalnetworks> for specific country contact details

## ASIA

### CHEF WORKS CHINA LTD.

Unit A- C, 4/F, World Tech Centre, 95 How Ming Street, Kwun Tong, Hong Kong  
**Tel:** (+852) 2529 3700  
**Fax:** (+852) 2529 3701  
**WhatsApp:** (+852) 55716821  
**Info:** [sales@chefworks.com.hk](mailto:sales@chefworks.com.hk)  
**Website:** [www.chefworks.com.hk](http://www.chefworks.com.hk)

## CANADA

### CHEF WORKS CANADA INC.

35 Fulton Way, Unit 2, Richmond Hill, Ontario, L4B 2N4, Canada  
**Toll Free:** 1 (888) 640 2433  
**Tel:** +1 (905) 761-7220  
**Fax:** +1 (905) 660 7975  
**Info:** [chefworks@chefworks.ca](mailto:chefworks@chefworks.ca)  
**Website:** [www.chefworks.ca](http://www.chefworks.ca)

## EUROPE

### CHEF WORKS EUROPE, LTD.

7 Springfield Commercial Centre, Bagley Lane, Leeds LS28 5LY, UK  
**Tel:** +44 (0)113 256 8677  
**Info:** [customerservice@chefworks.co.uk](mailto:customerservice@chefworks.co.uk)  
**Website:** [www.chefworks.co.uk](http://www.chefworks.co.uk)

## LATAM

### CHEF WORKS CHILE

Gilberto Fuenzalida #56, Las Condes, Santiago, Chile  
Director: Alvaro Waldman Reinberg Tel: (+56) 998227634  
**Tel:** (+56) 2 2 220 2000  
**Info:** [alvaro@chefworksworld.cl](mailto:alvaro@chefworksworld.cl)  
**Website:** [www.chefworks.cl](http://www.chefworks.cl)

## INTERNATIONAL

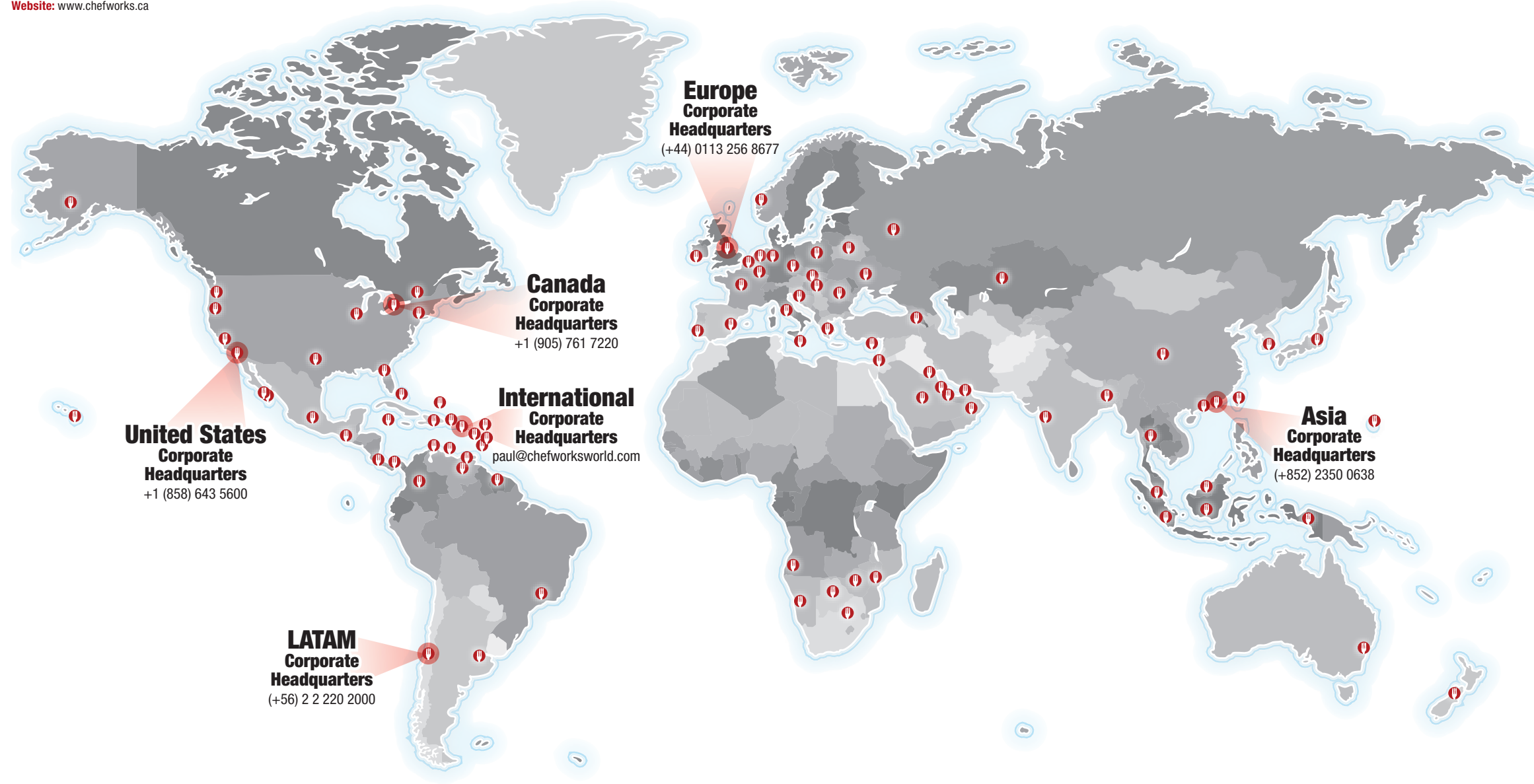
### CHEF WORKS INTERNATIONAL, LTD.

Geneva Place 2nd Floor 333 Waterfront Drive Road Town,  
Tortola British Virgin Islands  
**Info:** [paul@chefworksworld.com](mailto:paul@chefworksworld.com)

## UNITED STATES OF AMERICA

### CHEF WORKS, INC.

12325 Kerran St, Poway, CA 92064, USA  
**Toll Free:** +1 (800) 372 6621  
**Tel:** +1 (858) 643 5600  
**Fax:** +1 (858) 643 5624  
**Info:** [orders@chefworks.com](mailto:orders@chefworks.com)  
**Website:** [www.chefworks.com](http://www.chefworks.com)



# Special Thanks...

to the following chefs, locations and restaurants in the USA, UK, Canada and Mexico:

David Baker, Ayres Hotel, Costa Mesa, CA. Barret Beyer, Star Studded Events & Catering, New York, NY. Shihomi Borillo, Azuki Sushi, San Diego, CA. Marisela Cervantes, Chef Selary - Personal Chef & Private Events, Minneapolis, MN. Dolores Fleming, Islas Cultivated, Las Vegas, NV. Giuseppe Ciuffa, Giuseppe Restaurants & Fine Catering, La Jolla, CA. Chris Crary, CC Concepts Inc., Los Angeles, CA. Dominique Crenn, Atelier Crenn, San Francisco, CA. Louie Jocson, California Fish Grill, Orange County, CA. Ramon Douglas, RF Catering & Chatsworth Charter High School. Anthony Endy, Alisal Guest Ranch & Resort, Orange County, CA. Micah Fields, The Standard, Los Angeles, CA. Terry French, World Extreme Chef. Antonio Friscia, Legal Restaurants, San Diego, CA. Bernard Guillas, The Marine Room, La Jolla, CA. Adam Gunderson, San Diego, CA. Sharone Hakman, Hak's Food, Los Angeles, CA. Fabrice Hardele, The Westgate Hotel, San Diego, CA. Charles Imbelli, True Food Kitchen, Austin, TX. George Kapetsonis, Marriott Marquis & Marina, San Diego, CA. Chad Kilgore, Cup of Dreams Foundation, San Diego, CA. Jenny Behm-Lazzarini, Red Fin Crudo, Providence, RI. Cory Newman, Vista, CA. Javier Plascencia, Restaurant Jazamango, Todos Santos, Baja California Sur. Lance Repp, University Club atop Symphony Towers, San Diego, CA. Russell Rummer, San Diego, CA. Deborah Scott, Cohn Restaurant Group, San Diego, CA. Andrew Spurgin, Andrew Spurgintm, San Diego, CA. Kevin Templeton, barleymash, San Diego, CA. Fern Tran, Legal Restaurants, San Diego, CA. Kristianne Uy, Chef K LA, Los Angeles, CA. Vaughn Vargus, University of California San Diego, La Jolla, CA. David Warner, Eat. Drink. Sleep., San Diego, CA. Rodney Williams, Strawberry Creek Inn, Idyllwild, CA. Penelope Wong, Glenmoor Country Club, Cherry Hills Village, CO. Graham Elliot, Gideon Sweet, Chicago, IL. Bobby Trevino, Chicago, IL. Massimo Capra, Massimo Capra Restaurants, Toronto, ON. Ginger Niles, La Valencia Hotel, La Jolla, CA. Logan Guleff, Logan's Underground Supper Club, Memphis, TN. Jet Tila, Los Angeles, CA. Brian Malarkey, Herb & Wood, San Diego, CA. Claudia Sandoval, Chef Claudia's Cocina, San Diego, CA. Karla Navarro, The Kitchen Studio, Tijuana, MX. Lamar Moore, Currency Exchange Café, Chicago, IL. Stacey Poon-Kinney, The Trails Eatery, San Diego, CA. Jenny Goycochea, Del Mar, CA. Phillip Esteban, CH Projects, San Diego, CA. Hunter Fieri, Las Vegas, NV. Priscilla Curiel, Priscilla Chef Catering, Chula Vista, CA. Carla Hall, Co-host of ABC's The Chew, New York, NY. Elizabeth Falkner, Falk Yeah! Productions, New York, NY. Einat Admony, Bar Bolonat, New York, NY. Alex Raij, Txikito, New York, NY. Frank Bilotti, Mr. Ciao, Staten Island, NY. Chip Miller, Michael Jordan's Steakhouse, Chicago, IL. Russell Jackson, Popfoods TV, New York, NY. Ivana Raca, Raca Café & Bar, Toronto, ON. Thiago Silva, CHEW Innovation, Boston, MA

San Diego locations include:

Vintana Wine + Dine, Escondido, CA. One Door North, The Smoking Goat Restaurant, Herb & Wood, Herringbone La Jolla, Ironside Fish & Oyster, Luce Loft, JRDN, Ballast Point Brewing Company Miramar, The Cork & Craft, Craft & Commerce, Bread & Cie, Porkyland, The Lot, Cutwater Spirits, Soda & Swine Liberty Station, India Street, Little Italy, Liberty Public Market, Fireside by the Patio, BASIC Bar/Pizza, L'Auberge Del Mar Hotel, OB Warehouse (Closed), Table No. 10 (Closed), La Focaccia (Closed), Gang Kitchen (Closed)

Los Angeles locations include:

Terranea Resort & Spa

New York locations include:

Mr. Ciao's, Carla Hall's Southern Kitchen (Closed)

UK locations include:

Hypha in Chester, The Church Green in Cheshire and The Royal Garden Hotel in London.

Embroidery Credit:

Sunfare, SeaSalt Restaurant, Mexx 32, The DogHouseKowloon

Photography Credits:

Aaron Brown, Jim Coit, Don Diaz, Aidin Foster, Martin Rusch, Michael Spangler, Jason Moore, David Lindsay, Steve Bootle, Jason Russell and third party suppliers.



ITEM CODE	PAGE
0060194/96	165
0061194/96	165
0915-2325	105
1295	159
1300	155
132672	103
1449	156
1726	148
1011237	165
1011232	165
1463	147
2030	163
2214	94
2222	150
2224	151
2229	153
2234	151
2781-7847	103
2246	153
2255	159
2256	159
2257	158
2258	158
2260	153
2263	152
2270	94
2272	157
2275	157
2276	157
2287	159
2289	151
2293	157
2294	151
2303	56
2306	153
2310	147
2319	92
2344	146
2362	93
2363	148
2364	148
2323A	91
26730	162
27041	162
28777	162
29166	162
3002	163
3125	155
32835	162
3344	158
3552	156
35353	162
36111	161
36320	161
37255	162
3836	146
38140	162
38960	161
39362	161
4050	157
4060	157
4070	157
4100	167

ITEM CODE	PAGE
4200	155
4300	167
4400	167
40187	163
41439	163
43261	163
47808	161
5200	155
5300	155
5647	150
5985	149
55452	163
6100	167
6200	156
6300	167
6400	167
6645-1625	105
66064	159
69578	161
7640	94
7882	92
7886A	91
7889	94
80047	161
8387	150
8557	154
8934	148
8648	158
8655	150
8755	156
8902	56
9077-7847	103
A	
A100	139
AB012	140
AB024	134
AB034	130
AB035	133
AB036	132
ABAQ054	121
ABCAQ004	120
ABCCD006	126
ABCD056	127
ABCKV003	124
ABKV053	125
ABCWT001	122
ABKV053	125
ABN01	110
ABN01W	111
ABN02	112
ABN02W	113
ABR01	114
ABS02	116
ABWT051	123
ABX01	118
ABXX052	128
ACN01	109
AHN01	119
AHN05	111
AHN06	113
AHN07	117
AHR01	115
AHWAQ014	121

ITEM CODE	PAGE
AHWKV013	125
AHWWT001	123
AHWXX012	129
ALWCD026	127
ALWXX022	129
APKBL	140
APKDC	140
AQ015	98
AQ025	98
AQ050	57
AQ051	55
AQ060	57
AW046	131
AW047	131
AW048	133
AW049	133
AW054	133
AWCD016	127
AWKV056	135
AQ0151	55
B	
BA210/B210F	100
BBLW	52
BCCT	170
BCCV	170
BCLZ008	27
BCMC010	28
BCWMC007	44
BCWLZ005	43
BCWSZ006	42
BCS0	170
BCSZ009	25
BHAT	171
BLSS	34
BPTA	141
BS0L	49
C	
CBC01	29
CBS01	5, 6, 14, 16
CBS01W	6, 38, 39
CES01	22
CES02	24
CES04	19
CES05W	41
CEZ01	21
CHAT	171
CFLA	141
CPWO	54
CQZ01	144
CQZ01W	145
CSAA	140
CSBA	140
CSCV	87
CSMC	88
CSMV	87
CSWC	89
CSWV	88
CVBP	51
D	
D500	86
DFBB	171
DFCV	171

ITEM CODE	PAGE
DFWB	171
DPDS	84
E	
ECHR	18
ECSS	17
EXDZ001	20
EXWDZ002	40
F	
F10	139
F24	141
F28	141
F35	139
F8	140
F9	141
H	
HB001	170
HBKV010	170
HBLW014	171
HC008	170
HBLW0141	171
J	
JLCV	30
JLLS	31
L	
LWLJ	45
N	
NBBP	53
NBMZ	53
NBBZ	53
NBCP	53
P	
PBE01	48
PBN01	52
PBN01W	52
PC001	50
PCSS	35
PEE01	49
PLEA	171
PR560	58
PR258	90
PR570	58
PR683	104
PR681	104
PR688	104
PR536	104
PS005	51
PW005	54
PR803	97
PR804	97
PW101	54
PW103	55
R	
REA100	10, 139
R231F	97
REAPK	9, 140
REBCLZ	7
RE36A	96
REDFCV	11
REF24	10, 141

ITEM CODE	PAGE
REPBN01	11
REWCCW	9
RESSSN	8
R208X	95
RX01F	98
RX101	98
R231M	97
R231F	97
S	
SCBL	170
SD001	59
SD004	59
SD011	59
SD014	59
SFB01	64
SFB01W	64
SFB02	70
SFB02W	70
SFB03	72
SFB03W	73
SFC01	62
SFC01W	63
SHC05	76
SHC05W	77
SHC06	80
SHC06W	81
SHC08	68
SHC08W	69
SHC10	66
SHC10W	67
SLMCH005	82
SLWCH002	83
SS044	99
SS424	99
SSSN	32
SX087	100
SX088	100
SX126	99
SX131	99
T	
TSME	75
TSWO	74
T0CP	171
V	
VSSS	23
W	
W500	78
WCCW	33
WPDS	85
X	
XFC01	172
XFC02	172
XNN03	136
XNN04	137
XNS05	138
XQ001	173
XNN04	137
XNS05	138
XNN04	137







**FRONT COVER:** Chef Philip Esteban wearing the **SPRINGFIELD** chef coat in white BESZ009-WHT and the **AUSTIN** Chef Bib Apron ABCDD006 in natural.

**BACK COVER:** SEATTLE Urban Bib and Bistro Aprons (ABS02/AHN07-TAU) with **LARGO** Straps (XNS05-ORA). **OMAHA URBAN SHORT SLEEVE SHIRT** (SHC10-WHT). See pages 56-57 for **JEANS**. See pages 156-158 for **FOOTWEAR** options.

Chef Works Germany GmbH  
Am Neubergsweg 12  
D-63868 Großwallstadt

+49 6022 506 00 09  
service@chefworks.de  
www.chefworks.de